



Northern California Fisheries Chart

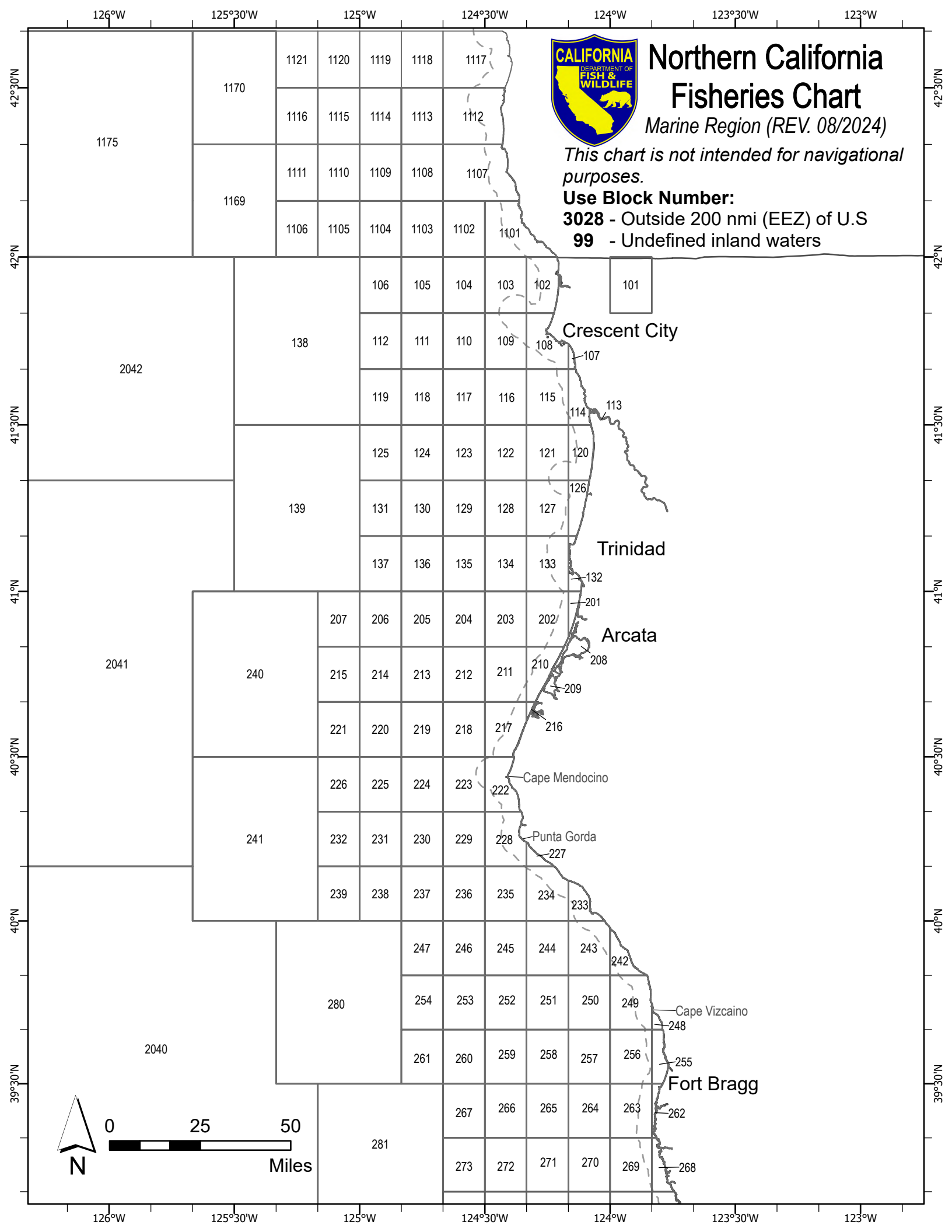
Marine Region (REV. 08/2024)

This chart is not intended for navigational purposes.

Use Block Number:

3028 - Outside 200 nmi (EEZ) of U.S

99 - Undefined inland waters



1170

1121 1120 1119 1118 1117

1116 1115 1114 1113 1112

1169

1111 1110 1109 1108 1107

1106 1105 1104 1103 1102 1101

106 105 104 103 102

101

138

112 111 110 109 108

Crescent City

119 118 117 116 115

2042

125 124 123 122 121 120

139

131 130 129 128 127

Trinidad

137 136 135 134 133

207 206 205 204 203 202

Arcata

2041

240

215 214 213 212 211 210

221 220 219 218 217 216

Cape Mendocino

226 225 224 223 222

Punta Gorda

241

232 231 230 229 228

239 238 237 236 235 234

242

280

247 246 245 244 243

Cape Vizcaino

254 253 252 251 250 249

2040

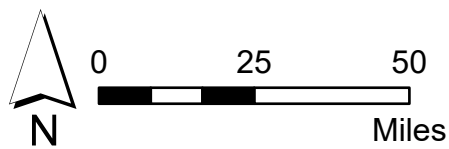
261 260 259 258 257 256

Fort Bragg

267 266 265 264 263

281

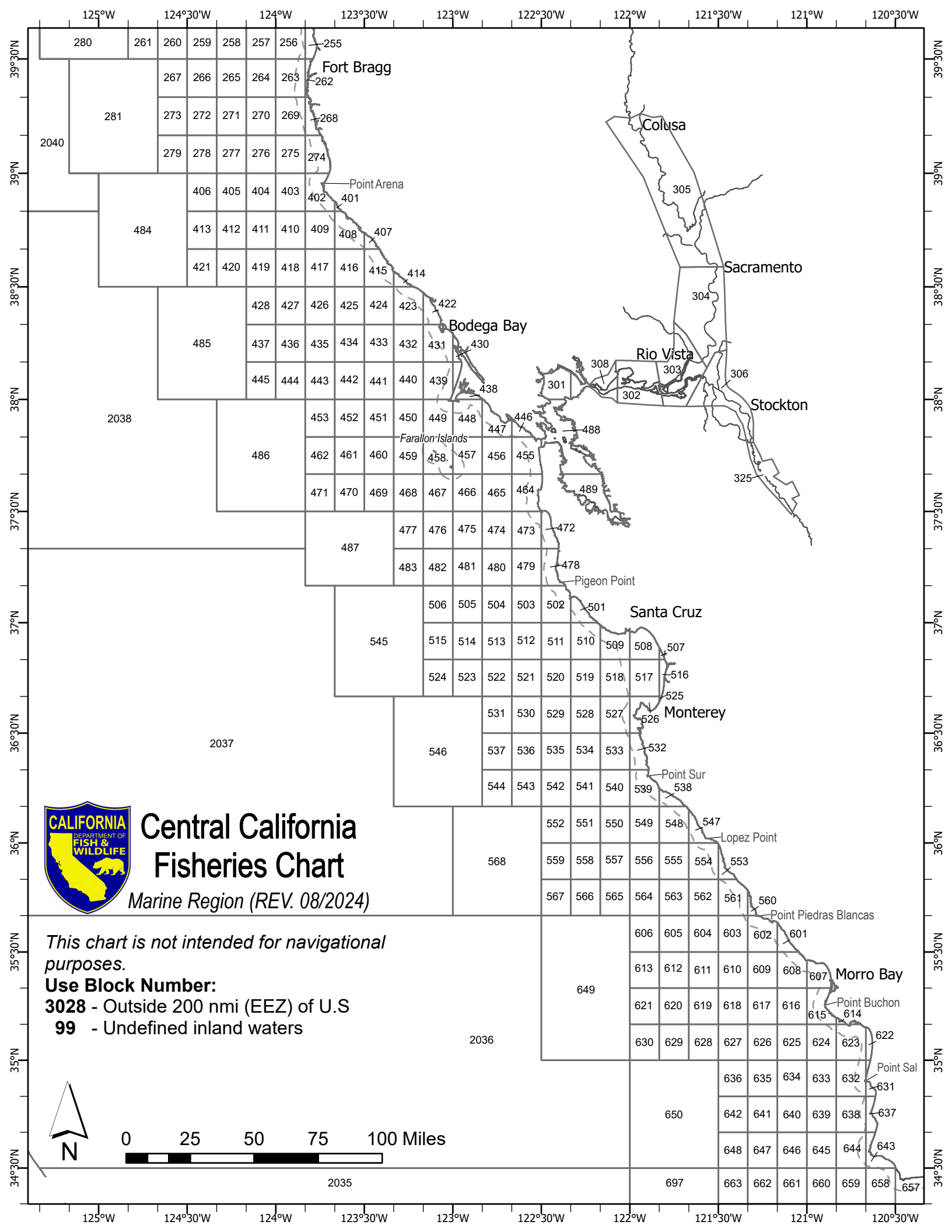
273 272 271 270 269



126°W 125°30'W 125°W 124°30'W 124°W 123°30'W 123°W

42°30'N 42°N 41°30'N 41°N 40°30'N 40°N 39°30'N

42°30'N 42°N 41°30'N 41°N 40°30'N 40°N 39°30'N



Central California Fisheries Chart

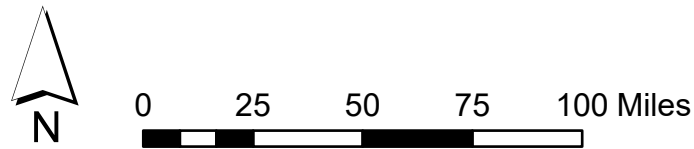
Marine Region (REV. 08/2024)

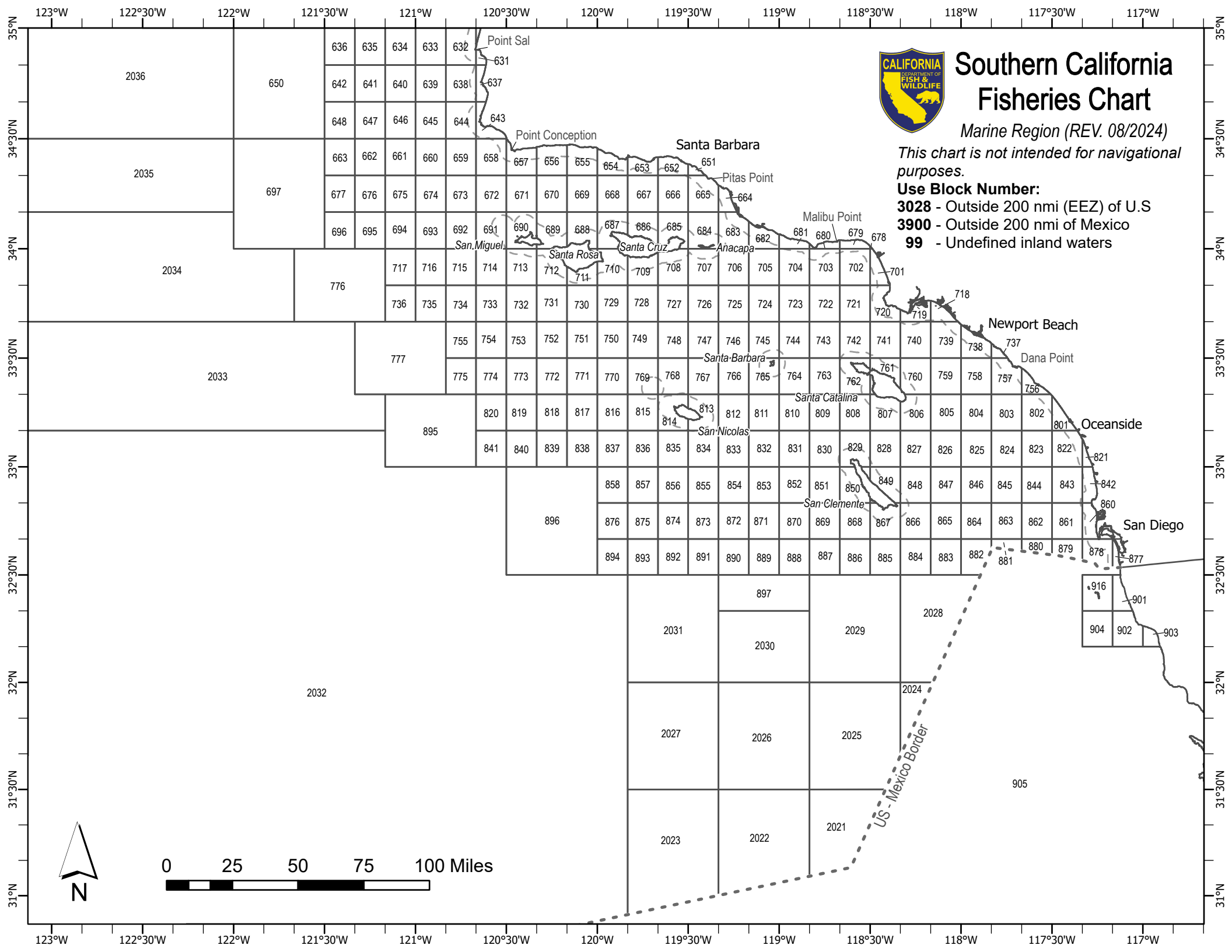
This chart is not intended for navigational purposes.

Use Block Number:

3028 - Outside 200 nmi (EEZ) of U.S

99 - Undefined inland waters





Southern California Fisheries Chart

Marine Region (REV. 08/2024)

This chart is not intended for navigational purposes.

Use Block Number:

3028 - Outside 200 nmi (EEZ) of U.S

3900 - Outside 200 nmi of Mexico

99 - Undefined inland waters

