



Abundance and Productivity of Marbled Murrelets (*Brachyramphus marmoratus*) Off Central California During the 2020 and 2021 Breeding Seasons

By Jonathan J. Felis, Josh Adams, Cheryl A. Horton, Emily C. Kelsey, and Laney M. White

Data Series #####

**U.S. Department of the Interior
U.S. Geological Survey**

Disclaimer: This information is preliminary or provisional and is subject to revision. It is being provided to meet the need for timely best science. The information has not received final approval by the U.S. Geological Survey (USGS) and is provided on the condition that neither the USGS nor the U.S. Government shall be held liable for any damages resulting from the authorized or unauthorized use of the information.

U.S. Department of the Interior
DEB HAALAND, Secretary

U.S. Geological Survey
Dave Applegate, Director

U.S. Geological Survey, Reston, Virginia: 2021

For more information on the USGS—the Federal source for science about the Earth, its natural and living resources, natural hazards, and the environment—visit <https://www.usgs.gov> or call 1-888-ASK-USGS (1-888-275-8747).

For an overview of USGS information products, including maps, imagery, and publications, visit <https://store.usgs.gov/>.

Any use of trade, firm, or product names is for descriptive purposes only and does not imply endorsement by the U.S. Government.

Although this information product, for the most part, is in the public domain, it also may contain copyrighted materials as noted in the text. Permission to reproduce copyrighted items must be secured from the copyright owner.

Suggested citation:

Felis, J.J., Adams, J., Horton, C.A., Kelsey, E.C., and White, L.M., 2021, Abundance and productivity of marbled murrelets (*Brachyramphus marmoratus*) off central California during the 2020 and 2021 breeding seasons: U.S. Geological Survey Data Series #####, ## p., <https://doi.org/10.3133/ds#####>.

ISSN 2327-638X (online)

Disclaimer: This information is preliminary or provisional and is subject to revision. It is being provided to meet the need for timely best science. The information has not received final approval by the U.S. Geological Survey (USGS) and is provided on the condition that neither the USGS nor the U.S. Government shall be held liable for any damages resulting from the authorized or unauthorized use of the information.

Acknowledgments

We would like to thank our additional murrelet observer: Alex Rinkert of California State Parks. We would also like to thank Morgan Gilmour (USGS) for logistical support. Finally, we are grateful to Ben Becker and Julie Yee for reviewing prior versions of this report. This work was funded by the U.S. Fish and Wildlife Service Natural Resource Damage Assessment and Restoration Program under the guidance of the Luckenbach Oil Spill Trustee Council.

Disclaimer: This information is preliminary or provisional and is subject to revision. It is being provided to meet the need for timely best science. The information has not received final approval by the U.S. Geological Survey (USGS) and is provided on the condition that neither the USGS nor the U.S. Government shall be held liable for any damages resulting from the authorized or unauthorized use of the information.

Contents

Acknowledgments	iii
Abstract.....	1
Introduction	2
Methods	4
At-Sea Survey Methods.....	4
Abundance Estimation Methods	1
Juvenile Ratio Methods	3
Results.....	7
Abundance Estimation Results.....	7
Juvenile Ratio Results	10
Discussion.....	11
References Cited	13

Figures

Figure 1. Maps of study area in U.S. Fish and Wildlife Service Conservation Zone 6 showing survey routes and marbled murrelet (*Brachyramphus marmoratus*) detections from Half Moon Bay to Santa Cruz, central California, 2020 (left) and 2021 (right) 1

Figure 2. Graphs showing annual modeled detection probabilities of marbled murrelets (*Brachyramphus marmoratus*) sighted within perpendicular distance less than or equal to 0.12 kilometers of vessel for all surveys, U.S. Fish and Wildlife Service Conservation Zone 6, central California, 2020 and 2021. Bin width is 0.02 kilometers (20 m)..... 8

Disclaimer: This information is preliminary or provisional and is subject to revision. It is being provided to meet the need for timely best science. The information has not received final approval by the U.S. Geological Survey (USGS) and is provided on the condition that neither the USGS nor the U.S. Government shall be held liable for any damages resulting from the authorized or unauthorized use of the information.

Figure 3. Graph showing mean annual marbled murrelet (*Brachyramphus marmoratus*) at-sea abundance estimates, U.S. Fish and Wildlife Service Conservation Zone 6, central California, for all years for which survey data was available during 2001 and 2021. Years 1999 and 2000 are excluded because survey routes were only drawn from the north in those years, and no surveys were conducted in 2004–2006. All values from years prior to 2017 were referenced from Henry (2017)..... 10

Figure 4. Graph showing date-corrected marbled murrelet (*Brachyramphus marmoratus*) hatch-year to after-hatch-year ratios (R), plus or minus standard errors, U.S. Fish and Wildlife Service Conservation Zone 6, central California, using standardized zig-zag surveys, 1999–2021. No surveys were conducted in 2004–2006. Surveys used to estimate ratios were limited to July 10–August 24. Date-corrected estimates were corrected for the proportion of hatch-year murrelets that had not fledged and the proportion of after-hatch-year murrelets still incubating at the time the survey was done (see Peery and others, 2007)..... 11

Tables

Table 1. Observer view condition classifications and descriptions for marbled murrelet (*Brachyramphus marmoratus*) surveys conducted from Half Moon Bay to Santa Cruz, central California, 2020 and 2021..... 1

Table 2. Marbled murrelet (*Brachyramphus marmoratus*) survey dates, route direction (direction from which route was drawn), effort, and observations for all surveys, U.S. Fish and Wildlife Service Conservation Zone 6, central California, 2020 and 2021..... 1

Table 3. Annual at-sea marbled murrelet (*Brachyramphus marmoratus*) abundance estimates (N) and 95% confidence intervals (95% CI), and estimates of date-corrected hatch-year to after-hatch-year (HY:AHY) ratios (R) and standard errors (SE), U.S. Fish and Wildlife Service Conservation Zone 6, central California, 1999–2021. Number of surveys, *n*, used in each estimate is listed. We do not report abundance

Disclaimer: This information is preliminary or provisional and is subject to revision. It is being provided to meet the need for timely best science. The information has not received final approval by the U.S. Geological Survey (USGS) and is provided on the condition that neither the USGS nor the U.S. Government shall be held liable for any damages resulting from the authorized or unauthorized use of the information.

estimates from 1999–2000 because only north-drawn survey routes were used in those years; see
methods for how the draw direction of survey routes can bias abundance estimates 9

Disclaimer: This information is preliminary or provisional and is subject to revision. It is being provided to meet the need for timely best science. The information has not received final approval by the U.S. Geological Survey (USGS) and is provided on the condition that neither the USGS nor the U.S. Government shall be held liable for any damages resulting from the authorized or unauthorized use of the information.

Conversion Factors

International System of Units to U.S. customary units

Multiply	By	To obtain
	Length	
meter (m)	3.281	foot (ft)
kilometer (km)	0.6214	mile (mi)
meter (m)	1.094	yard (yd)
	Area	
square kilometer (km ²)	0.3861	square mile (mi ²)

U.S. customary units to International System of Units

Multiply	By	To obtain
	Speed	
nautical mile per hour (knot)	1.852	kilometer per hour (km/h)

Datum

Horizontal coordinate information is referenced to the World Geodetic System of 1984 (WGS 84).

Abbreviations

χ^2	chi-squared
AHY	after hatch year
df	degrees of freedom
CI	confidence interval
GPS	Global Positioning System
HY	hatch year
N	population estimate (number of birds)
n	number of surveys
P	probability value
RV	research vessel
SE	standard error
USGS	U.S. Geological Survey

Disclaimer: This information is preliminary or provisional and is subject to revision. It is being provided to meet the need for timely best science. The information has not received final approval by the U.S. Geological Survey (USGS) and is provided on the condition that neither the USGS nor the U.S. Government shall be held liable for any damages resulting from the authorized or unauthorized use of the information.

Disclaimer: This information is preliminary or provisional and is subject to revision. It is being provided to meet the need for timely best science. The information has not received final approval by the U.S. Geological Survey (USGS) and is provided on the condition that neither the USGS nor the U.S. Government shall be held liable for any damages resulting from the authorized or unauthorized use of the information.

Abundance and Productivity of Marbled Murrelets (*Brachyramphus marmoratus*) Off Central California During the 2020 and 2021 Breeding Seasons

By Jonathan J. Felis, Josh Adams, Cheryl A. Horton, Emily C. Kelsey, and Laney M. White

Abstract

Marbled murrelets (*Brachyramphus marmoratus*) have been listed as “endangered” by the State of California and “threatened” by the U.S. Fish and Wildlife Service since 1992 in California, Oregon, and Washington. Information regarding marbled murrelet abundance, distribution, population trends, and habitat associations is critical for risk assessment, effective management, evaluation of conservation efficacy, and ultimately, to meet Federal- and State-mandated recovery efforts for this species. During June–August 2020 and 2021, the U.S. Geological Survey Western Ecological Research Center continued previously established, long-term (1996–present), at-sea surveys to estimate abundance and productivity of marbled murrelets in U.S. Fish and Wildlife Service Conservation Zone 6 (San Francisco Bay to Point Sur in central California). The abundance estimated for the entire study area was 470 birds (95-percent confidence interval, 313–707 birds) in 2020 and 402 birds (95-percent confidence interval, 219–

Disclaimer: This information is preliminary or provisional and is subject to revision. It is being provided to meet the need for timely best science. The information has not received final approval by the U.S. Geological Survey (USGS) and is provided on the condition that neither the USGS nor the U.S. Government shall be held liable for any damages resulting from the authorized or unauthorized use of the information.

737 birds) in 2021. Estimated abundances for both years are comparable with most prior years of study. We estimated reproductive productivity (calculated as the hatch-year [HY] to after-hatch-year [AHY] ratio) after date-correcting HY and AHY counts to account for birds expected to be absent from the water while inland at nests. The date-corrected juvenile ratio was 0.018 ± 0.011 standard error in 2020 and 0.041 ± 0.024 standard error in 2021. We updated a comprehensive database of all Zone 6 marbled murrelet survey data since 1999 with 2020–21 data to allow scientists and managers to evaluate established survey methods and assess trends in abundance and productivity estimates.

Introduction

The marbled murrelet (*Brachyramphus marmoratus*) is a small, diving seabird of the family Alcidae. Marbled murrelets inhabit North American nearshore marine waters from Alaska to central California. In California, marbled murrelets nest from March to October in forests within 80 kilometers (km) of the coast (Nelson, 1997). The southernmost known breeding area for marbled murrelets is south of San Francisco Bay in forested areas of the Santa Cruz Mountains near Point Año Nuevo and is separated from the nearest northern California breeding population by 240–320 km. An estimated 174–699 individuals compose the annual breeding population of marbled murrelets in this disjunct area (Henry, 2017). During their breeding season (April to August), the at-sea distribution of marbled murrelets adjacent to the Santa Cruz Mountains extends mostly from Half Moon Bay to Santa Cruz, with greatest abundance in the waters near Point Año Nuevo (Henry, 2017). Sightings of marbled murrelets south of Santa Cruz in Monterey Bay during the breeding season are infrequent (Ralph and Miller, 1995; Henkel, 2004), but there has been less survey effort in this region.

Disclaimer: This information is preliminary or provisional and is subject to revision. It is being provided to meet the need for timely best science. The information has not received final approval by the U.S. Geological Survey (USGS) and is provided on the condition that neither the USGS nor the U.S. Government shall be held liable for any damages resulting from the authorized or unauthorized use of the information.

In 2020 and 2021, the U.S. Geological Survey Western Ecological Research Center (USGS-WERC) partnered with California State Parks to continue long-term, at-sea surveys to estimate abundance and reproductive productivity of marbled murrelets in U.S. Fish and Wildlife Service Conservation Zone 6 (central California—San Francisco Bay to Point Sur). Marbled murrelets have been listed as “endangered” by the State of California and “threatened” by the U.S. Fish and Wildlife Service since 1992 in California, Oregon, and Washington (U.S. Fish and Wildlife Service, 2021). Abundance of marbled murrelets has been estimated at sea off central California since 1999 (excluding 2004–06; Henkel and Peery, 2008; Peery and others, 2009; Peery and Henry, 2010; Henry and others, 2012; Henry, 2017; Felis and others 2018; Felis and others 2019, Felis and others, 2020) and is funded by the U.S. Fish and Wildlife Service Natural Resource Damage Assessment and Restoration Program under the guidance of the Luckenbach Oil Spill Trustee Council. Information regarding marbled murrelet abundance, distribution, population trends, and habitat associations is critical for risk assessment, effective management and evaluation of conservation efficacy, and ultimately to meet Federal- and State-mandated recovery efforts for this species.

The USGS-WERC continued at-sea surveys in 2020 and 2021 to assess abundance and productivity for two primary purposes: (1) to maintain efforts to quantify the status of marbled murrelets in central California (U.S. Fish and Wildlife Service Conservation Zone 6) and (2) to help evaluate marbled murrelet response to ongoing corvid control in coastal California State parks. Additionally, the CZU Lightning Complex wildfire burned large areas of marbled murrelet nesting habitat in the Santa Cruz Mountains during late August and September 2020 (CAL FIRE, 2021); changes in local murrelet population and reproductive success in the wake of this habitat loss are of conservation and management concern. Finally, marbled murrelet

Disclaimer: This information is preliminary or provisional and is subject to revision. It is being provided to meet the need for timely best science. The information has not received final approval by the U.S. Geological Survey (USGS) and is provided on the condition that neither the USGS nor the U.S. Government shall be held liable for any damages resulting from the authorized or unauthorized use of the information.

distribution data at sea may help resource managers designate critical at-sea habitat for the species (for example, Bellefleur and others, 2009). In this report, we describe our methods and provide summaries of survey effort and results estimating marbled murrelet abundance and productivity (juvenile ratio) for 2020 and 2021.

Methods

At-Sea Survey Methods

In 2020 and 2021, USGS-WERC completed nine at-sea boat-based surveys per year for marbled murrelets between Half Moon Bay and Santa Cruz, California ([fig. 1](#)). We conducted surveys during the previously-established survey window (June 1–August 24; Henry, 2017) and allocated surveys to two periods within this window: three surveys during June 1–July 9 and six surveys during July 10–August 24. We used data from all surveys to estimate marbled murrelet abundance and we used the six surveys during the second survey period to estimate juvenile ratio (following Henry, 2017). Surveys were almost exclusively conducted when viewing conditions were excellent to good ([table 1](#)).

Disclaimer: This information is preliminary or provisional and is subject to revision. It is being provided to meet the need for timely best science. The information has not received final approval by the U.S. Geological Survey (USGS) and is provided on the condition that neither the USGS nor the U.S. Government shall be held liable for any damages resulting from the authorized or unauthorized use of the information.

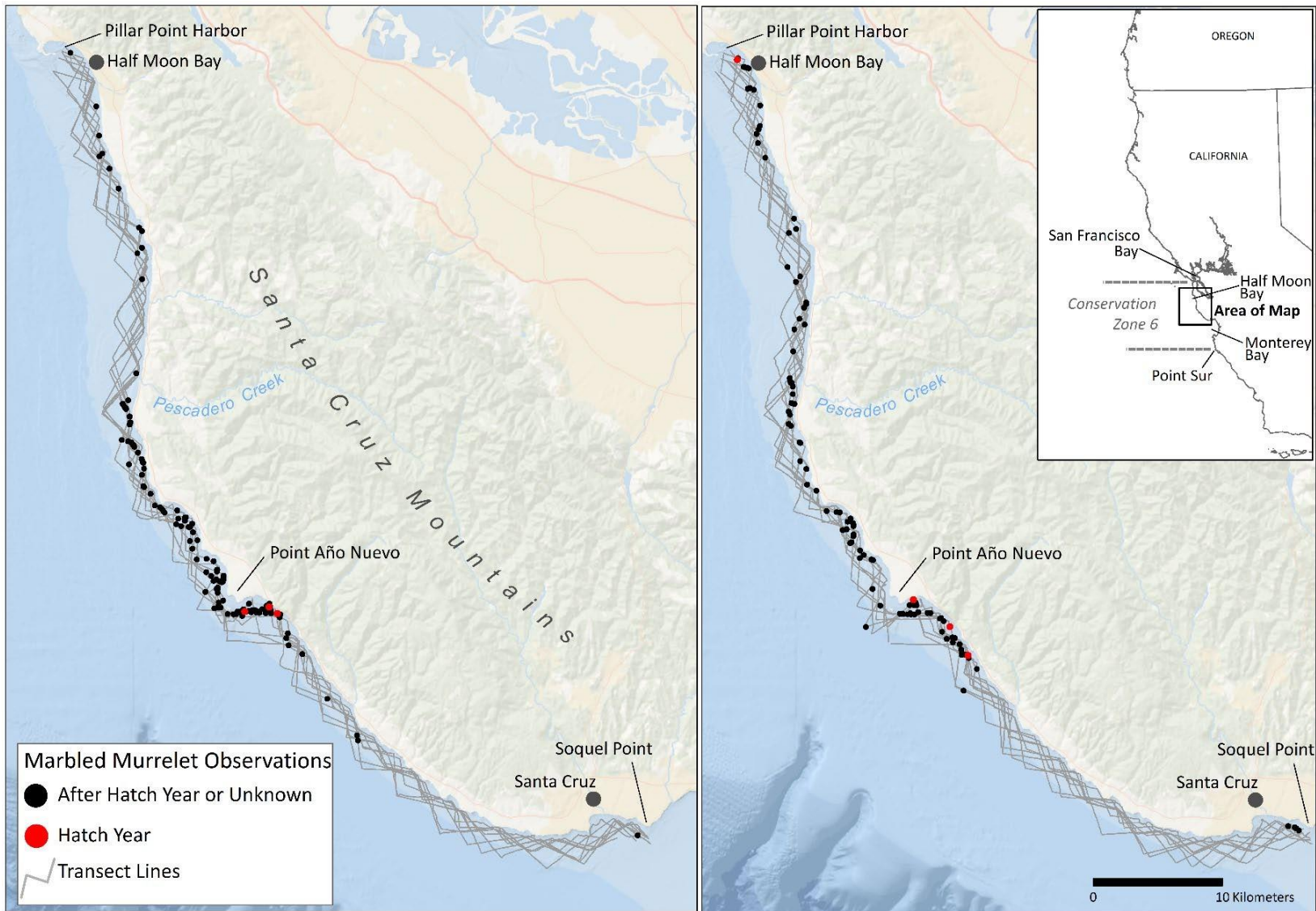


Figure 1. Maps of study area in U.S. Fish and Wildlife Service Conservation Zone 6 showing survey routes and marbled murrelet (*Brachyramphus marmoratus*) detections from Half Moon Bay to Santa Cruz, central California, 2020 (left) and 2021 (right).

Disclaimer: This information is preliminary or provisional and is subject to revision. It is being provided to meet the need for timely best science. The information has not received final approval by the U.S. Geological Survey (USGS) and is provided on the condition that neither the USGS nor the U.S. Government shall be held liable for any damages resulting from the authorized or unauthorized use of the information.

Table 1. Observer view condition classifications and descriptions for marbled murrelet (*Brachyramphus marmoratus*) surveys conducted from Half Moon Bay to Santa Cruz, central California, 2020 and 2021.

View Condition	Description
5—Excellent	Glassy
4—Very Good	Wavelets and (or) minor glare
3—Good	Small waves/wavelets and (or) minor glare; still able to reliably detect murrelets within ~150 m of line (75 m aside for each observer)
2—Fair	Waves and (or) moderate glare; chance of missing murrelets within ~150 m of line (75 m aside for each observer)
1—Poor	High wind waves and (or) high glare; murrelets very difficult to detect

In 2001–2003, a pool of 40 unique survey routes were designed by Peery and others (2007) as continuous, approximately 100-km-long zig-zag transect lines to sample nearshore (200–1,350 meters [m] from coast) and offshore (1,350–2,500 m from coast) strata, with approximately four-times-greater-effort within the nearshore stratum owing to greater known marbled murrelet densities nearshore (see Henry, 2017, and references therein). Routes originally were drawn starting at a random distance (200–2,500 m) from shore, and an equal number of routes were drawn using starting points at the north and south ends of the survey area. Survey routes that are drawn from the south typically result in a greater amount of habitat surveyed within south-facing, leeward bays that often have greater relative abundances of marbled murrelets than more exposed stretches of the coast; annual survey replicates have typically included an equal number of routes drawn from north and south (Henry, 2017).

In 2020 and 2021, we randomly selected (without replacement) 9 unique survey routes each year (5 drawn from the south and 4 from the north) from the pool of available routes used

Disclaimer: This information is preliminary or provisional and is subject to revision. It is being provided to meet the need for timely best science. The information has not received final approval by the U.S. Geological Survey (USGS) and is provided on the condition that neither the USGS nor the U.S. Government shall be held liable for any damages resulting from the authorized or unauthorized use of the information.

by Henry (2017) and Peery and others (2006) during 2001–16 surveys. We conducted all surveys by following the selected route from north (Pillar Point Harbor, Half Moon Bay) to south (Soquel Point, Monterey Bay) using a Global Positioning System (GPS). When the survey route intersected land or crossed hazardous areas (for example, high surf areas nearshore), we maintained survey effort while safely navigating as close as possible to the transect line. We conducted surveys from a small boat using line-transect methods (Becker and others, 1997; Peery and others, 2006; Henry, 2017). Two observers, standing on either side of a 6-m open skiff (Boston Whaler Guardian 20; R/V *Lucy M*) traveling 12–15 knots (22–28 km per hour), recorded the observation time, angle off the transect line, distance from the vessel, and group size of all marbled murrelets detected. The skiff was operated by a third crew member whose sole responsibility was piloting the vessel. Skiff size and travel speed were consistent with those used in surveys conducted since 2007. From 1999–2003, surveys were conducted in a 4-m open inflatable skiff at approximately 10 knots (18 km per hour).

Observers counted marbled murrelets as a group when individuals were within 2 m of each other or if they showed behavior indicative of group status (for example, co-diving or vocalizing with one another; Strong and others, 1995). Observers recorded the age-class of each marbled murrelet based on three plumage classifications: (1) “after-hatch-year” (AHY), (2) “hatch-year” (HY), or (3) “unknown.” Behavior was recorded as “resting” on the water or “flying,” with flight direction noted. Distance and angle were estimated at the time of first detection, regardless of behavior. Prior to each survey, observers calibrated distance estimation using a laser rangefinder on buoys and other targets in the harbor. To facilitate estimations of sighting angles, we placed marks along the bow of the boat in 10-degree increments. The vessel occasionally paused or deviated from the transect line to assess marbled murrelet age-class; no

Disclaimer: This information is preliminary or provisional and is subject to revision. It is being provided to meet the need for timely best science. The information has not received final approval by the U.S. Geological Survey (USGS) and is provided on the condition that neither the USGS nor the U.S. Government shall be held liable for any damages resulting from the authorized or unauthorized use of the information.

additional observations were counted when deviating off the transect line. Observers also recorded observations of all non-murrelet marine birds and mammals encountered along transects, consistent with surveys conducted since 2007. Marine mammal observations were recorded using line-transect methods as described for murrelets and non-murrelet bird observations were counted in a 75-m aside strip transect (no distances or angles recorded). Non-murrelet observations were archived but are not presented or analyzed in this report.

Observers recorded all observations and observation times using digital voice recorders, including survey start and end times, ocean conditions (Beaufort Sea state), viewing conditions (table 1), and time periods when effort was paused for any reason (for example, vessel deviated from the transect line to identify marbled murrelet age-class). Observers reviewed their own recordings and transcribed and tabulated their sighting data into a single spreadsheet that was examined for quality assurance and quality control and then merged into a combined spreadsheet. We acquired a continuous 1-second GPS track during each survey using a handheld GPS unit; this track was used to georeference observations based on matching date/time using custom scripting in R (R Core Team, 2016).

We updated a comprehensive database of all marbled murrelet survey data since 1999 (Felis and others, 2020) with 2020 and 2021 data to allow scientists and managers to evaluate established survey methods and assess trends in abundance estimation and juvenile ratios.

Disclaimer: This information is preliminary or provisional and is subject to revision. It is being provided to meet the need for timely best science. The information has not received final approval by the U.S. Geological Survey (USGS) and is provided on the condition that neither the USGS nor the U.S. Government shall be held liable for any damages resulting from the authorized or unauthorized use of the information.

Table 2. Marbled murrelet (*Brachyramphus marmoratus*) survey dates, route direction (direction from which route was drawn), effort, and observations for all surveys, U.S. Fish and Wildlife Service Conservation Zone 6, central California, 2020 and 2021.

Survey Date	Route Direction	Transect Length (km)	Number of Groups	Mean Group Size	Number of Individuals	Number of Hatch Year
6/18/2020	South	102.1	10	1.70	17	0
6/23/2020	North	102.3	7	1.29	9	0
6/25/2020	South	103.6	23	1.65	38	0
7/20/2021	South	96.5	29	1.76	51	0
7/21/2020	North	103.7	19	1.58	30	0
7/29/2020	South	103.0	21	1.76	37	0
8/12/2020	North	99.1	8	2.00	16	0
8/13/2020	North	101.3	33	1.67	55	2
8/15/2020	South	101.1	24	2.08	50	1
2020 Total			174	1.74	303	3
6/12/2021	South	101.6	10	1.30	13	0
6/24/2021	North	103.9	12	1.67	20	0
7/1/2021	South	98.7	17	1.76	30	0
7/13/2021	North	103.7	4	1.75	7	0
7/23/2021	South	95.7	16	1.75	28	0
7/28/2021	North	102.3	42	1.83	77	1
7/30/2021	South	97.3	16	1.88	30	0
8/9/2021	North	101.0	7	1.71	12	2
8/23/2021	South	103.6	5	2.20	11	1
2021 Total			129	1.77	228	4

Disclaimer: This information is preliminary or provisional and is subject to revision. It is being provided to meet the need for timely best science. The information has not received final approval by the U.S. Geological Survey (USGS) and is provided on the condition that neither the USGS nor the U.S. Government shall be held liable for any damages resulting from the authorized or unauthorized use of the information.

Abundance Estimation Methods

We calculated perpendicular distance for each detection ($\text{sine of the sighting angle} \times \text{observation distance}$, where the sighting angle is relative to the direction the boat is pointed). Consistent with all previous years (1999–present), we included sightings of flying birds in our analysis, despite the potential that flying birds might have a different probability of detection and including these could affect abundance estimates. Historical protocol (1999–2003) for this monitoring program indicated that flying birds should only be counted if they cross the beam of the vessel, and the distance and angle to flying birds was only to be estimated when flying birds crossed the beam (90-degree angle and a distance estimate; Henry and Tyler, 2017). Re-examination of historical data (Felis and others, 2021) showed that this protocol was followed in earlier years (1999–2003) but that flying birds were given a distance/angle estimate for when they were first detected in later years (2007–2016). We maintained the methodology of 2007–2016 for estimating distance and angle of flying birds at the time of first sighting and counted them whether or not they crossed the beam of the vessel during 2017–present.

We created a spatial representation of strata in ArcGIS™ based on the same coastline shapefile used in 2007–present (California Department of Fish and Wildlife, 2004) and calculated linear effort for each survey within the nearshore and offshore strata consistent with previous years by using the hypothetical survey route delineated by the zigzag segment nodes (table 2). We assigned marbled murrelet observations to either each stratum in ArcGIS™ based on spatial overlap. The calculation of stratum-specific linear effort and the assignment of observations to strata from 1999–2003 was conducted with an older coastline representation (Peery and others, 2006). We maintained the use of the modern stratum delineation to facilitate

Disclaimer: This information is preliminary or provisional and is subject to revision. It is being provided to meet the need for timely best science. The information has not received final approval by the U.S. Geological Survey (USGS) and is provided on the condition that neither the USGS nor the U.S. Government shall be held liable for any damages resulting from the authorized or unauthorized use of the information.

comparison of our abundance estimates to recent data (2007–present) but we advise caution when comparing recent estimates with older abundance estimates from 1999–2003.

Following Henry (2017), we used the program DISTANCE v7.1 (Thomas and others, 2010) to model our detection function and estimate marbled murrelet abundance using conventional distance sampling (see Buckland and others, 2015, for detection function modeling, model selection, and line transect abundance estimation methods). For each year, we pooled observations from all surveys to create an annual detection function and applied this function to each survey to calculate stratum- and survey-specific density estimates based on the linear effort sampled during each survey. Consistent with Henry (2017), we grouped perpendicular detection distances into 20-m bins, used a 120-m truncation distance, and evaluated the half-normal function, with or without cosine expansion (expansion orders automatically varied by DISTANCE); of these iterations, we selected the detection function model with the smallest Akaike information criterion (AIC; Burnham and Anderson, 2004) value (that is, most parsimonious fit). We used the mean of observed cluster size to estimate cluster (group) sizes at the sample (transect) level. We calculated survey-specific abundances by multiplying the stratum-specific density estimate by the total area of each stratum in the study area (104.65 square kilometers [km^2] for each) and then summed the two stratum-specific abundance values for a total area abundance estimate. Variances of abundance estimates incorporate variances from the overall detection model, encounter rates across surveys, and cluster (group) size (see Buckland and others, 2015, for details).

We report annual abundances and 95-percent confidence intervals (95-percent CI) estimates for 2017–2021 (current program of study), and previously reported abundance estimates from 1999–2016 (as reported by Henry 2017). Estimates from 1999–2016 were

Disclaimer: This information is preliminary or provisional and is subject to revision. It is being provided to meet the need for timely best science. The information has not received final approval by the U.S. Geological Survey (USGS) and is provided on the condition that neither the USGS nor the U.S. Government shall be held liable for any damages resulting from the authorized or unauthorized use of the information.

calculated similarly, with a few exceptions. Peery and others (2006) included covariates (observer, view conditions) in annual detection function model selection from 1999–2003 but this practice was not continued from 2007–2016 (Henkel and Peery, 2008; Peery and others, 2008; Peery and Henry, 2010; Henry and others, 2012; Henry and Tyler, 2017). Additionally, detection functions were modeled annually except for 2008, when at-sea murrelet observations and number of surveys were too few to model a year-specific detection function. As a result, Peery and others (2008) modeled a detection function using pooled observation data from 2007–2008 and applied to 2008 data to estimate abundance. Peery and others (2006) used detection distance binning schemes other than 20-m when analyzing data from 1999–2003. Finally, the spatial boundaries of strata are different for 1999–2003 and 2007–2021 analyses because different coastline representations were used, resulting in subtle changes in stratum-specific linear effort calculations and observation assignments.

Juvenile Ratio Methods

We estimated the juvenile ratio (the ratio of HY to AHY individuals) for marbled murrelet surveys conducted during the fledging period. The previously established fledging period ranges from July 10, when an estimated 34 percent of HY birds are thought to have fledged, to August 24, about the time when HY and AHY murrelets become indistinguishable at sea because AHY birds begin pre-basic molt (Long and others, 2001; Peery and others, 2007). Thus, we included only surveys between July 10 and August 24 to estimate annual juvenile ratios (following Henry, 2017). Identification of HY birds followed techniques outlined by Long and others (2001) and were aided by reviewing resources before surveys provided by the Alaska murrelet group (K. Nesvacil, Alaska Department of Fish and Game, written commun., 2017) and

Disclaimer: This information is preliminary or provisional and is subject to revision. It is being provided to meet the need for timely best science. The information has not received final approval by the U.S. Geological Survey (USGS) and is provided on the condition that neither the USGS nor the U.S. Government shall be held liable for any damages resulting from the authorized or unauthorized use of the information.

photographs of potential HY birds taken during the survey. We included only those birds confidently identified to age class to estimate the juvenile ratio. Raw counts are used for the ratio, as opposed to estimates of density or abundance from detection function modeling, under the assumption that HY and AHY murrelets have equivalent detection functions (Peery and others, 2007).

We adjusted HY and AHY counts to account for birds estimated to have been inland during the time of the survey. A certain percentage of AHY birds are still incubating young during the fledging period and, therefore, are not on the water during at-sea surveys, potentially creating a positively biased juvenile ratio. The proportion, p_{A_i} , of AHY birds incubating in survey i , is reported to be less than 6 percent between July 10 and July 17 and less than 1 percent after July 17 (Peery and others, 2004, 2007) and estimated by linear regression model (Peery and others, 2007) as

$$p_{A_i} = 18.7145545 - 0.18445455 \times DATE_i + 0.00045455 \times DATE_i^2 \quad (1)$$

where

$DATE_i$ is Julian Day of survey i (Peery and others, 2007).

Therefore, to correct for the number of AHY birds counted at sea between July 10 and July 17, we calculated, as the date-corrected number of AHY individuals, A_i , as

$$A_i = \frac{A_{observed_i}}{1-p_{A_i}} \quad (2)$$

where

$A_{observed_i}$ is the number of after-hatch-year (AHY) birds counted on survey i , and

p_{A_i} is the proportion of incubating AHY individuals during survey i (eq. 1).

Disclaimer: This information is preliminary or provisional and is subject to revision. It is being provided to meet the need for timely best science. The information has not received final approval by the U.S. Geological Survey (USGS) and is provided on the condition that neither the USGS nor the U.S. Government shall be held liable for any damages resulting from the authorized or unauthorized use of the information.

For surveys after July 17, we assumed no birds were incubating, and the observed number of AHY birds was not date-corrected.

In addition to adjusting for incubating adults (to avoid positive bias in the estimated ratio), the juvenile ratio calculation can be negatively biased by not accounting for HY birds that have not yet fledged by the time of the survey. Based on 47 observed fledging events in California, Peery and others (2007) estimated the daily percent of juveniles expected to have fledged during the study timeframe. Therefore, to adjust for the number of HY birds observed during a given at-sea survey, we calculated the proportion, p_{H_i} , of HY birds incubating in survey i , estimated by linear regression model (Peery and others, 2007) as,

$$p_{H_i} = -1.5433 + 0.0098 \times DATE_i \quad (3)$$

where

$DATE_i$ is Julian Day of survey i .

To correct for the number of HY birds not counted at sea because they had not yet fledged, we calculated the date-corrected number of HY individuals, H_i , as

$$H_i = \frac{H_{observed_i}}{p_{H_i}} \quad (4)$$

where

$H_{observed_i}$ is the number of HY individuals counted on survey i .

For each year, we used A_i and H_i to estimate the juvenile ratio (R),

$$R = \frac{\sum_1^n H_i}{\sum_1^n A_i} \quad (5)$$

where

Disclaimer: This information is preliminary or provisional and is subject to revision. It is being provided to meet the need for timely best science. The information has not received final approval by the U.S. Geological Survey (USGS) and is provided on the condition that neither the USGS nor the U.S. Government shall be held liable for any damages resulting from the authorized or unauthorized use of the information.

n is the number of surveys (Levy and Lemeshow, 1991).

For each year, we estimated the variance of the date-corrected juvenile ratio ($v_{\text{DC}}(R)$) as

$$v_{\text{DC}}(R) = \frac{1}{n} \left(\frac{v_{\text{DC}}(H)}{A^2} + \frac{v_{\text{DC}}(A)}{A^4} - \frac{2\bar{H}c_{\text{DC}}(H,A)}{A^3} \right) \quad (6)$$

where

$v_{\text{DC}}(H)$ is the variance in the number of date-corrected hatch-year (HY) individuals observed,

$v_{\text{DC}}(A)$ is the variance in the number of date-corrected after-hatch-year (AHY) individuals observed,

$c_{\text{DC}}(H, A)$ is the covariance between the numbers of date-corrected HY and AHY individuals observed,

\bar{H} and \bar{A} are the mean numbers of date-corrected HY and AHY individuals observed, respectively (van Kempen and van Vliet, 2000; Peery and others, 2007; Henry, 2017), and

n is the number of surveys.

We calculated annual juvenile ratios for 1999–2021 using only standardized zig-zag transects (using data compiled in Felis and others, 2020) and report those results herein. We calculated date-corrected juvenile ratios and associated variance using R (R Core Team, 2016).

Disclaimer: This information is preliminary or provisional and is subject to revision. It is being provided to meet the need for timely best science. The information has not received final approval by the U.S. Geological Survey (USGS) and is provided on the condition that neither the USGS nor the U.S. Government shall be held liable for any damages resulting from the authorized or unauthorized use of the information.

Results

Abundance Estimation Results

We detected 164 marbled murrelet groups consisting of 286 murrelets on all surveys combined in 2020 (range 9–55 birds per survey; table 2). We detected 128 marbled murrelet groups consisting of 226 murrelets on all surveys combined in 2021 (range 7–77 birds per survey; table 2). In 2020, murrelet sightings were concentrated from around Point Año Nuevo to Pescadero Creek; sightings were sporadic between Half Moon Bay and Pescadero Creek and rare from just south of Point Año Nuevo to Santa Cruz (fig. 1). Similar to 2020, murrelet sightings in 2021 were concentrated from Point Año Nuevo to Pescadero Creek and rare from south of Point Año Nuevo to Santa Cruz; however, birds were seen more frequently between Half Moon Bay and Pescadero Creek and an aggregation of murrelets was seen near Soquel Point on a single survey (July 28; fig. 1).

Detections approached zero at 120-m horizontal sighting distance for both years (fig. 2); therefore, consistent with Henry (2017), we excluded from analysis observations that were greater than 120 m from the transect line. We included flying birds (4 and 13 percent of all detections in 2020 and 2021, respectively; following Henry, 2017). For all surveys combined in 2020, the half-normal detection model with a cosine adjustment (order 2) was the best-fitting model and the observed number of sightings was not significantly different from the number predicted using this detection model (chi-squared [χ^2] = 2.00, degrees of freedom [df] = 3, probability value [P] = 0.57; fig. 2). The abundance estimated for the entire study area in 2020 using all surveys was 470 birds (95-percent CI, 313–707 birds; percent coefficient of variation [CV], 19.0; table 3). For all surveys combined in 2021, the half-normal detection model with no

Disclaimer: This information is preliminary or provisional and is subject to revision. It is being provided to meet the need for timely best science. The information has not received final approval by the U.S. Geological Survey (USGS) and is provided on the condition that neither the USGS nor the U.S. Government shall be held liable for any damages resulting from the authorized or unauthorized use of the information.

adjustments was the best-fitting model, and the observed number of sightings was not significantly different from the number predicted using this detection model (chi-squared $[\chi^2] = 1.93$, degrees of freedom $[df] = 4$, probability value $[P] = 0.75$; [fig. 2](#)). The abundance estimated for the entire study area in 2021 using all surveys was 402 birds (95-percent CI, 219–737 birds; percent coefficient of variation $[CV]$, 27.8; [table 3](#)). Estimated abundances for all study years (2001–2021) are shown in [table 3](#) and [figure 3](#).

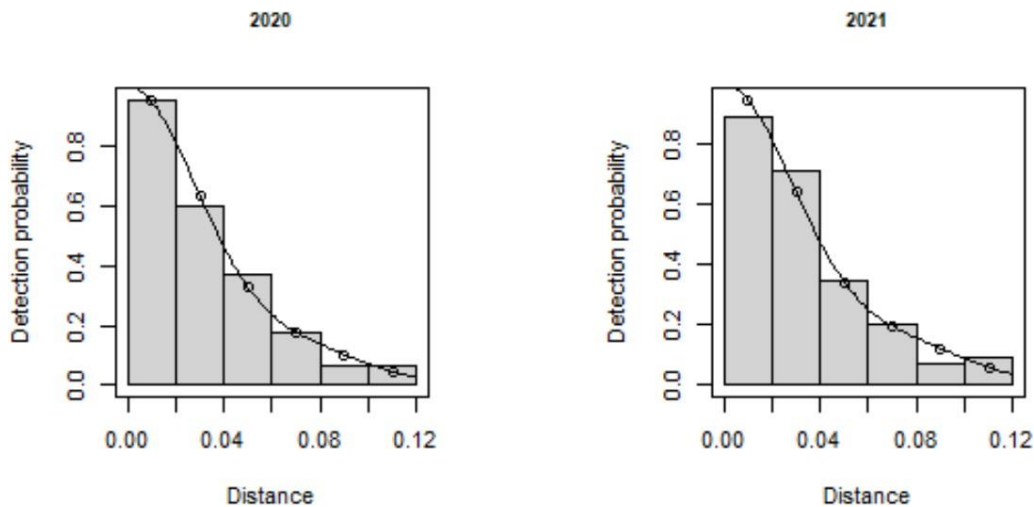


Figure 2. Graphs showing annual modeled detection probabilities of marbled murrelets (*Brachyramphus marmoratus*) sighted within perpendicular distance less than or equal to 0.12 kilometers of vessel for all surveys, U.S. Fish and Wildlife Service Conservation Zone 6, central California, 2020 and 2021. Bin width is 0.02 kilometers (20 m).

Disclaimer: This information is preliminary or provisional and is subject to revision. It is being provided to meet the need for timely best science. The information has not received final approval by the U.S. Geological Survey (USGS) and is provided on the condition that neither the USGS nor the U.S. Government shall be held liable for any damages resulting from the authorized or unauthorized use of the information.

Table 3. Annual at-sea marbled murrelet (*Brachyramphus marmoratus*) abundance estimates (N) and 95% confidence intervals (95% CI), and estimates of date-corrected hatch-year to after-hatch-year (HY:AHY) ratios (\hat{R}) and standard errors (SE), U.S. Fish and Wildlife Service Conservation Zone 6, central California, 1999–2021. Number of surveys, n , used in each estimate is listed. We do not report abundance estimates from 1999–2000 because only north-drawn survey routes were used in those years; see methods for how the draw direction of survey routes can bias abundance estimates.

Year	Total Abundance			HY:AHY Ratio		
	N	95% CI	n	\hat{R}	SE	n
1999		N/A	4	0.057	0.027	4
2000		N/A	4	0.024	0.012	4
2001	661	556–786	15	0.070	0.021	8
2002	683	561–832	15	0.051	0.009	11
2003	699	567–860	12	0.049	0.011	8
2004	N/A	N/A	0	N/A	N/A	0
2005	N/A	N/A	0	N/A	N/A	0
2006	N/A	N/A	0	N/A	N/A	0
2007	378	238–518	4	0.049	0.052	3
2008	174	91–256	4	0.000	NA	4
2009	631	449–885	8	0.028	0.018	4
2010	446	340–585	7	0.081	0.039	3
2011	433	339–553	6	0.080	0.018	3
2012	487	403–588	6	0.029	0.022	3
2013	628	386–1022	6	0.122	0.062	3
2014	438	307–624	9	0.081	0.035	6
2015	243	152–386	9	0.059	0.020	6
2016	657	406–1063	7	0.108	0.051	5
2017	530	384–732	9	0.022	0.015	6
2018	370	250–546	9	0.047	0.032	6
2019	404	272–601	8	0.025	0.020	6
2020	470	313–707	9	0.018	0.011	6
2021	402	219–737	9	0.041	0.024	6

Disclaimer: This information is preliminary or provisional and is subject to revision. It is being provided to meet the need for timely best science. The information has not received final approval by the U.S. Geological Survey (USGS) and is provided on the condition that neither the USGS nor the U.S. Government shall be held liable for any damages resulting from the authorized or unauthorized use of the information.

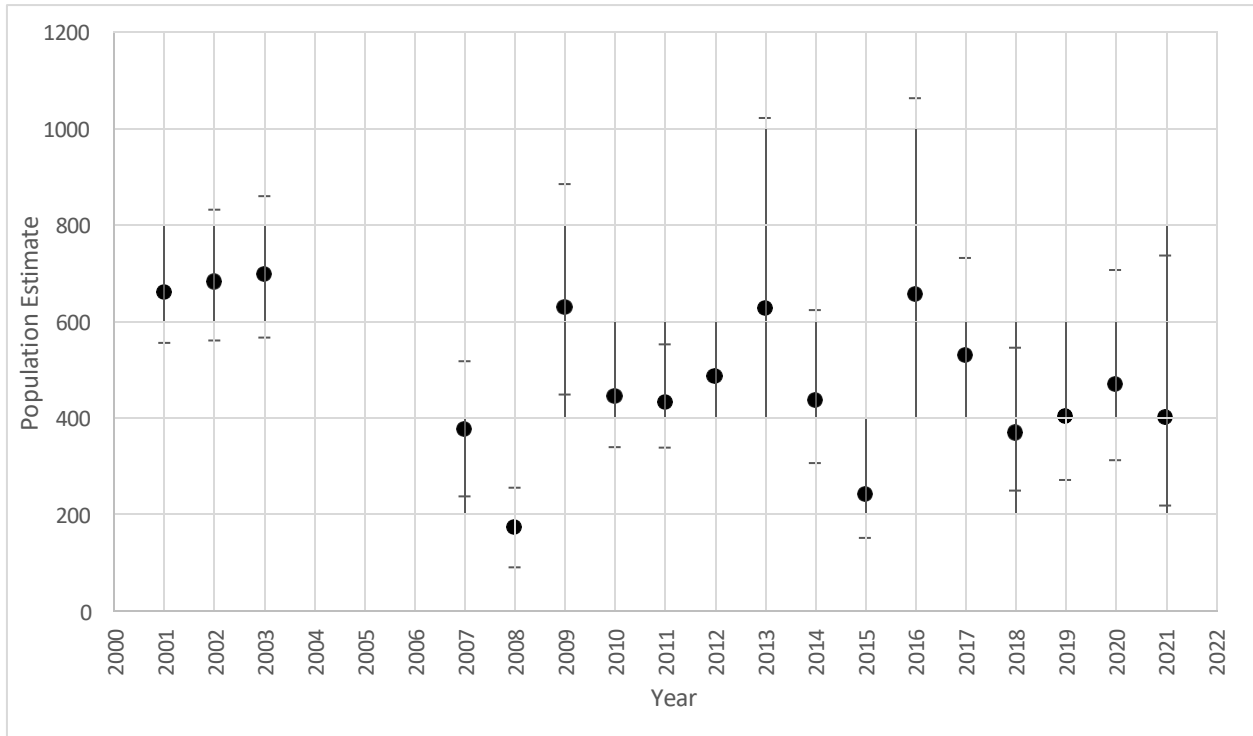


Figure 3. Graph showing mean annual marbled murrelet (*Brachyramphus marmoratus*) at-sea abundance estimates, U.S. Fish and Wildlife Service Conservation Zone 6, central California, for all years for which survey data was available during 2001 and 2021. Years 1999 and 2000 are excluded because survey routes were only drawn from the north in those years, and no surveys were conducted in 2004–2006. All values from years prior to 2017 were referenced from Henry (2017).

Juvenile Ratio Results

We detected three HY marbled murrelets in 2020, two on August 13, and one on August 15 (table 2; fig. 1). In 2020, the corrected juvenile ratio (R_j) was 0.018 ± 0.011 SE. We detected four HY marbled murrelets in 2021, one on July 28, two on August 9, and one on August 23 (table 2; fig. 1). In 2021, the corrected juvenile ratio (R_j) was 0.041 ± 0.024 SE. Estimated corrected juvenile ratios using standardized zig-zag surveys (1999–2021; calculated in this study) are shown in table 3 and figure 4.

Disclaimer: This information is preliminary or provisional and is subject to revision. It is being provided to meet the need for timely best science. The information has not received final approval by the U.S. Geological Survey (USGS) and is provided on the condition that neither the USGS nor the U.S. Government shall be held liable for any damages resulting from the authorized or unauthorized use of the information.

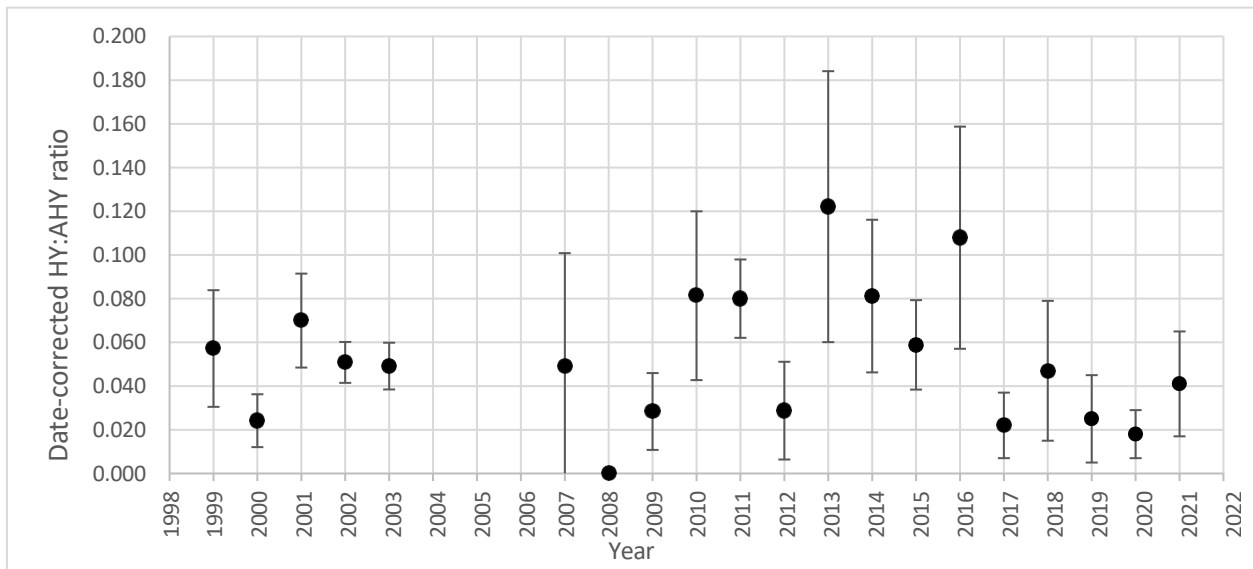


Figure 4. Graph showing date-corrected marbled murrelet (*Brachyramphus marmoratus*) hatch-year to after-hatch-year ratios (R), plus or minus standard errors, U.S. Fish and Wildlife Service Conservation Zone 6, central California, using standardized zig-zag surveys, 1999–2021. No surveys were conducted in 2004–2006. Surveys used to estimate ratios were limited to July 10–August 24. Date-corrected estimates were corrected for the proportion of hatch-year murrelets that had not fledged and the proportion of after-hatch-year murrelets still incubating at the time the survey was done (see Peery and others, 2007).

Discussion

We followed survey methods and analytical procedures to estimate densities and abundances for marbled murrelets using conventional distance sampling off central California according to methods described in Henry (2017). Estimated abundance from 2020 (470 murrelets) was similar to the long-term mean (2001–2021: 485 murrelets), whereas estimated abundance from 2021 (402 murrelets) was less; however, both years are comparable at the 95-

Disclaimer: This information is preliminary or provisional and is subject to revision. It is being provided to meet the need for timely best science. The information has not received final approval by the U.S. Geological Survey (USGS) and is provided on the condition that neither the USGS nor the U.S. Government shall be held liable for any damages resulting from the authorized or unauthorized use of the information.

percent CI level to most prior years of study. The corrected juvenile ratios in 2020 (0.018) and 2021 (0.041) were less than the long-term mean from zig-zag surveys (1999–2021: 0.052). Despite the significant loss of breeding habitat due to the CZU fire, estimated abundance and productivity results for 2021, as well as the spatial distribution of murrelet sightings, were not dramatically different than results from recent years; however, estimated abundance was more variable than is typical primarily because inter-survey murrelet encounter rates were more variable. The CZU fire initiated late in the 2020 breeding season when approximately 75% of successful murrelet nests are expected to have fledged a chick in this region (Peery and others, 2007), suggesting that fire-induced nest failure due to adult abandonment and chick mortality could have been limited. It is uncertain how long it may take for any potential population changes and/or distributional shifts of murrelets at the regional scale to manifest in estimated abundances and productivity at sea within the study area.

Future re-calculation of annual abundance estimates could 1) model more robust global detection functions for distinct eras of this program (e.g., 1999–2003 with a smaller vessel at slower speeds, 2007–present with a larger vessel at faster speeds), 2) consistently allow for covariates (e.g., observer, viewing conditions) to be included in detection function modeling, 3) remove flying birds from detection function modeling—and potentially from annual density and abundance estimates—given the inconsistencies in how and when these birds were recorded over time, and 4) use consistent stratum boundaries to assign linear effort and observations to the nearshore and offshore strata. Future annual productivity estimates could 1) investigate differences in juvenile and adult murrelet distribution with respect to distance from shore and alongshore in the study area that could bias ratio estimates, 2) focus survey effort for juveniles in long-term juvenile hot spots, and 3) use juvenile encounter rate or estimated abundance to derive

Disclaimer: This information is preliminary or provisional and is subject to revision. It is being provided to meet the need for timely best science. The information has not received final approval by the U.S. Geological Survey (USGS) and is provided on the condition that neither the USGS nor the U.S. Government shall be held liable for any damages resulting from the authorized or unauthorized use of the information.

a measure of productivity that is not sensitive to fluctuating numbers of adult murrelets within the study area.

The annual marbled murrelet survey program has involved several different research groups through time; therefore, we updated the comprehensive database of all marbled murrelet survey data since 1999 with 2020 and 2021 data to facilitate future survey method evaluations and assessments of trends in estimated abundance and juvenile ratios (Felis and others, 2020). This database also facilitates annual survey logistics (for example, pre-survey planning) and promotes repeatability of analytical methods across years and project teams.

References Cited

- Becker, B.H., Beissinger, S.R., and Carter, H.R., 1997, At sea density monitoring of marbled murrelets in central California—Methodological considerations: *The Condor*, v. 99, no. 3, p. 743–755, <https://doi.org/10.2307/1370485>.
- Bellefleur, D., Lee, P., and Ronconi, R.A., 2009, The impact of recreational boat traffic on Marbled Murrelets (*Brachyramphus marmoratus*): *Journal of Environmental Management*, v. 90, no. 1, p. 531–538.
- Buckland, S.T., Rexstad, E.A., Marques, T.A., and Oedekoven, C.S., 2015, Distance sampling—Methods and applications: Cham, Switzerland, Springer International Publishing, 277 p., <https://doi.org/10.1007/978-3-319-19219-2>.
- Burnham, K.P., and Anderson, D.R., 2004, Multimodel inference: understanding AIC and BIC in model selection: *Sociological Methods & Research*, v. 33, no. 2, p. 261–304.

Disclaimer: This information is preliminary or provisional and is subject to revision. It is being provided to meet the need for timely best science. The information has not received final approval by the U.S. Geological Survey (USGS) and is provided on the condition that neither the USGS nor the U.S. Government shall be held liable for any damages resulting from the authorized or unauthorized use of the information.

California Department of Fish and Wildlife, 2004, Generalized California coastline—
coastn83.shp: California Department of Fish and Wildlife database, accessed October 20,
2017, at <https://www.wildlife.ca.gov/Conservation/Marine/GIS/Downloads>.

California Department of Forestry and Fire Protection (CAL FIRE), 2021, CZU Lightning
Complex (Including Warnella Fire) Incident, accessed October 26, 2021, at
<https://www.fire.ca.gov/incidents/2020/8/16/czu-lightning-complex-including-warnella-fire>

Felis, J.J., Adams, J., and Kelsey, E.C., 2018, Abundance and productivity of marbled murrelets
of central California during the 2017 breeding season: U.S. Geological Survey Data Series
1093, 12 p., <https://doi.org/10.3133/ds1093>.

Felis, J.J., Kelsey, E.C., and Adams, J., 2019, Abundance and productivity of marbled murrelets
of central California during the 2018 breeding season: U.S. Geological Survey Data Series
1107, 10 p., <https://doi.org/10.3133/ds1107>.

Felis, J.J., Kelsey, E.C., Adams, J., Horton, C., and White, L., 2020, Abundance and productivity
of marbled murrelets (*Brachyramphus marmoratus*) off central California during the 2019
breeding season: U.S. Geological Survey Data Series 1123, 13 p.,
<https://doi.org/10.3133/ds1123>.

Felis, J.J., Adams, J., Peery, M.Z., Henry, R.W., Henkel, L.A., Becker, B.H., and Halbert, P.,
2021, Annual marbled murrelet abundance and productivity surveys off central California
(Zone 6), 1999–2021: U.S. Geological Survey data release,
<https://doi.org/10.5066/F75B01RW>.

Henkel, L.A., 2004, At-sea distribution of marbled murrelets in San Luis Obispo County,
California: Watsonville, California, H.T. Harvey and Associates, 14 p.

Disclaimer: This information is preliminary or provisional and is subject to revision. It is being provided to meet the need for timely best science. The information has not received final approval by the U.S. Geological Survey (USGS) and is provided on the condition that neither the USGS nor the U.S. Government shall be held liable for any damages resulting from the authorized or unauthorized use of the information.

- Henkel, L.A., and Peery, M.Z., 2008, Abundance and productivity of marbled murrelets off central California during the 2007 breeding season: Moss Landing, California, Moss Landing Marine Laboratories, 13 p.
- Henry, R.W., 2017, Murrelet at-sea abundance, productivity, and prey resources in Zone 6, *in* Halbert, P., and Singer, S.W., eds., Marbled murrelet landscape management plan for zone 6, Felton, California: California Department of Parks and Recreation, 235 p.
- Henry, R.W., and Tyler, W.B., 2017, Abundance and productivity of marbled murrelets off central California during the 2013-2016 breeding seasons: Santa Cruz, California, University of California Santa Cruz, 12 p.
- Henry, R.W., Tyler, W.B., and Peery, M.Z., 2012, Abundance and productivity of marbled murrelets off central California during the 2010 and 2011 breeding seasons: Half Moon Bay, California, California State Parks, 17 p.
- Levy, P.S., and Lemeshow, S., 1991, Sampling of populations—Methods and applications (2d ed.): New York, Wiley, 420 p.
- Long, L.L., Ralph, C.J., and Miller, S.L., 2001, A new method for ageing marbled murrelets and the effect on productivity estimates: *Pacific Seabirds*, v. 28, p. 82–91.
- Nelson, S. K., 1997, Marbled Murrelet (*Brachyramphus marmoratus*) (ver. 2.0), *in* Poole, A.F., and Gill, F.B., eds., *The birds of North America*: Ithaca, N.Y., Cornell Lab of Ornithology, <https://doi.org/10.2173/bna.276>.
- Peery, M.Z., Becker, B.H., and Beissinger, S.R., 2006, Combining demographic and count-based approaches to identify source-sink dynamics of a threatened seabird: *Ecological Applications*, v. 16, no. 4, p. 1516–1528, [https://doi.org/10.1890/1051-0761\(2006\)016\[1516:CDACAT\]2.0.CO;2](https://doi.org/10.1890/1051-0761(2006)016[1516:CDACAT]2.0.CO;2).

Disclaimer: This information is preliminary or provisional and is subject to revision. It is being provided to meet the need for timely best science. The information has not received final approval by the U.S. Geological Survey (USGS) and is provided on the condition that neither the USGS nor the U.S. Government shall be held liable for any damages resulting from the authorized or unauthorized use of the information.

- Peery, M.Z., Becker, B.H., and Beissinger, S.R., 2007, Age ratios as estimators of productivity—Testing assumptions on a threatened seabird, the marbled murrelet: *The Auk*, v. 124, no. 1, p. 224–240, [https://doi.org/10.1642/0004-8038\(2007\)124\[224:ARAEOP\]2.0.CO;2](https://doi.org/10.1642/0004-8038(2007)124[224:ARAEOP]2.0.CO;2).
- Peery, M.Z., Beissinger, S.R., Newman, S.H., Burkett, E.B., and Williams, T.D., 2004, Applying the declining population paradigm—Diagnosing causes of poor reproduction in the marbled murrelet: *Conservation Biology*, v. 18, no. 4, p. 1088–1098, <https://doi.org/10.1111/j.1523-1739.2004.00134.x>.
- Peery, M.Z., Hall, L.A., Harvey, J.T., and Henkel, L.A., 2008, Abundance and productivity of marbled murrelets off central California during the 2008 breeding season: Half Moon Bay, California, California State Parks, 10 p.
- Peery, M.Z., and Henry, R.W., 2010, Abundance and productivity of marbled murrelets off central California during the 2009 breeding season: Half Moon Bay, California, California State Parks, 16 p.
- Peery, M.Z., Newman, S.H., Storlazzi, C.D., and Beissinger, S.R., 2009, Meeting reproductive demands in a dynamic upwelling system—Foraging strategies of a pursuit-diving seabird, the marbled murrelet: *The Condor*, v. 111, no. 1, p. 120–134, <https://doi.org/10.1525/cond.2009.080094>.
- Ralph, C.J., and Miller, S.L., 1995, Offshore population estimates of marbled murrelets in California, *in* Ralph, C.J., Hunt, G.L., Raphael, M.G., and Piatt, J.F., eds., *Ecology and conservation of the marbled murrelet*: U.S. Forest Service General Technical Report PSW– GTR–152, p. 353–360.
- R Core Team, 2016, *R—A language and environment for statistical computing*: Vienna, Austria, R Foundation for Statistical Computing, <https://www.R-project.org/>.

Disclaimer: This information is preliminary or provisional and is subject to revision. It is being provided to meet the need for timely best science. The information has not received final approval by the U.S. Geological Survey (USGS) and is provided on the condition that neither the USGS nor the U.S. Government shall be held liable for any damages resulting from the authorized or unauthorized use of the information.

Strong, C.S., Keitt, B.S., Bradford, S., McIver, W.R., Palmer, C.J., and Gaffney, I., 1995, Distribution and population estimates of marbled murrelets at sea in Oregon during the summers of 1992 and 1993, *in* Ralph, C.J., Hunt, G.L., Jr., Raphael, M.G., and Piatt, J.F., eds., Ecology and conservation of the marbled murrelet: U.S. Forest Service General Technical Report PSW–GTR–152, p. 339–352.

Thomas, L., Buckland, S.T., Rexstad, E.A., Laake, J.L., Strindberg, S., Hedley, S.L., Bishop, J.R.B., Marques, T.A., and Burnham, K.P., 2010, Distance software—Design and analysis of distance sampling surveys for estimating population size: *Journal of Applied Ecology*, v. 47, no. 1, p. 5–14, <https://doi.org/10.1111/j.1365-2664.2009.01737.x>.

U.S. Fish and Wildlife Service, 2021, Marbled Murrelet Species Profile, accessed 11/18/2021, at https://www.fws.gov/arcata/es/birds/mm/m_murrelet.html

van Kempen, G.M.P., and van Vliet, L.J., 2000, Mean and variance of ratio estimators used in fluorescence imaging: *Cytometry*, v. 39, no. 4, p. 300–305, [https://doi.org/10.1002/\(SICI\)1097-0320\(20000401\)39:4<300::AID-CYTO8>3.0.CO;2-O](https://doi.org/10.1002/(SICI)1097-0320(20000401)39:4<300::AID-CYTO8>3.0.CO;2-O).

Disclaimer: This information is preliminary or provisional and is subject to revision. It is being provided to meet the need for timely best science. The information has not received final approval by the U.S. Geological Survey (USGS) and is provided on the condition that neither the USGS nor the U.S. Government shall be held liable for any damages resulting from the authorized or unauthorized use of the information.