



2024

Marine Region

By The Numbers

Table of Contents



2024 Marine Region	3
Commercial Fishing	4
Recreational Fishing	7
Marine Region Highlights	9
Permitting	9
State Experimental Fishing Permits (EFPs)	9
Marine Scientific Collecting Permits (SCPs)	9
Other Permits Issued	9
Artificial Reefs	9
California Endangered Species Act (CESA)	
Memoranda of Understanding (MOU)	9
Regulatory Activity	9
Dive Program	9
Marine Region Vessels	10
Data Collection	11
Marine Region Information Sharing	11
General Outreach	11
Marine Management News Blog	11
Marine Protected Area Project	11
Data Sharing	12
Publications	12





Message from the Regional Manager

As I reflect back on another year, I find myself embracing the highs and lows that come from managing California's marine resources in an ever-changing world. While our salmon continued to struggle and the recreational and commercial ocean salmon fisheries remained closed for a second year in a row, I remain optimistic.

In early 2024, Governor Newsom launched [California's Salmon Strategy for a Hotter, Drier Future](#) and for the first time in a generation, we saw salmon [return to historic habitat in the upper Klamath River Basin](#) – just months after completion of the historic dam removal. Although large-scale recovery will take time, the Salmon Strategy offers hope for restoring California's salmon populations and iconic fisheries.

Despite the heavy toll of a closed salmon season for the second year, we had a number of high points throughout 2024. The groundfish boat-based season kicked off in April and remained open through the end of the year throughout the entire state. Anglers in southern California had the opportunity to target rockfish in the previously closed waters of the Cowcod Conservation Areas for the first time in more than 20 years. These waters produced some spectacular catches while still protecting the sensitive and abundant coral and sponge populations within eight smaller [Groundfish Exclusion Areas](#).

We celebrated the 75th anniversary of the California Cooperative Oceanic Fisheries Investigations. Known as [CalCOFI](#), this program has collected marine samples and data off California's coast longer than any other marine ecosystem field research initiative in the world, marking three quarters of a century dedicated to understanding our ocean.

In partnership with the California Fish and Game Commission and Ocean Protection Council, we embarked on a process to receive and evaluate petitions aimed at improving California's network of Marine Protected Areas. To ensure transparency and public engagement, we created an [MPA Story Map](#) which provides detailed information about the petitions and the review process.

Finally, a true highlight for me was a surprise gift of marine-themed artwork from the students of Herron House Preschool Center in Selma, CA. This simple, yet heartfelt gesture, was a poignant reminder of how deeply connected all Californians are to the ocean and how future generations depend on us.

Looking ahead, I see both challenges and opportunities. Regardless of the obstacles, I am confident that CDFW staff, California Tribes, stakeholders, policymakers, and partners will come together, driven by our shared love for the ocean, to ensure the sustainable management of California's ocean resources and a healthy future.

Dr. Craig Shuman





2024 Marine Region

The California Department of Fish and Wildlife's Region 7 is known as the Marine Region. It encompasses approximately **5,767** square statute miles of state waters, including San Francisco Bay and San Pablo Bay to the Carquinez Bridge.

For the 2023-2024 fiscal year, the Marine Region budget was **\$30,380,049**.

152 permanent staff as of December 31, 2024.

Temporary Positions:

7 Permanent Intermittent Fish and Wildlife Technicians

75 Fish & Wildlife Scientific Aids





Commercial Fishing

Weight and Ex-Vessel Value¹ of Commercial Landings by Port Area²

Port Area	Pounds	Ex-Vessel Value
Santa Barbara	81,517,823	\$64,983,615
Los Angeles	50,566,187	\$37,451,989
San Francisco	7,722,825	\$26,515,641
Eureka	7,359,938	\$20,018,255
San Diego	4,556,133	\$12,110,114
Bodega Bay	3,276,381	\$10,939,611
Monterey	16,123,299	\$7,930,496
Fort Bragg	4,953,436	\$5,423,659
Morro Bay	1,608,502	\$3,678,279
Totals	117,684,528	\$189,051,663

¹Ex-Vessel Value is the amount paid to the fishermen at the dock.

²Port Area includes multiple ports in the same geographic region. A full list of the ports included in a given Port Area can be found in the Port [Reference Table](#).
Data as of 02/14/2025. Date Source: Department's Marine Region, Marine Fisheries Statistical Unit



Top 2024 Commercial Fishery Numbers

Total Commercial Landing Fees Collected for all Fisheries: **\$1,373,425**

Top Ex-Vessel Value: **\$67,854,320** Market squid

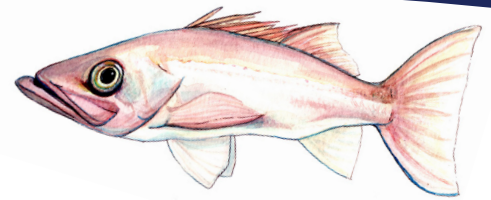
Top Weight: **126,430,905 lbs** Market squid



Dungeness crab, *Metacarcinus magister*, and market squid, *Doryteuthis (Loligo) opalescens*
illustrations by CDFW Environmental Scientist (ES) Claudia Makeyev



Commercial Fishing



Vessel Registration and Fishing License Revenue

Type	Numbers Sold	Revenue
Resident Vessel	2,587	\$1,228,825
Non-Resident Vessel	270	\$376,785
Total Vessels	2,857	\$1,605,610
Resident License	4,829	\$898,387
Non-Resident License	537	\$289,711
Total Licenses	5,366	\$1,188,098

Data as of 02/14/2025. Commercial Passenger Fishing Vessel (CPFV permit) is a subset of the Resident and Non-Resident Vessel total. There were 575 Registered Commercial Passenger Fishing Vessels with a total value of \$273,125. Data Source: Department's License and Revenue Branch. *Note that landings and value reported over the calendar year (January 1 – December 31) This may differ from seasonal landings for specific fisheries reported elsewhere.

Top Fisheries Landed by Weight

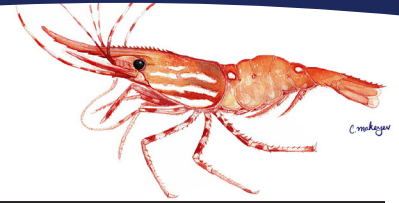
Fishery	Pounds	Ex-Vessel Value
Market Squid	126,430,905	\$67,854,320
Dungeness Crab	14,173,812	\$49,744,975
Northern Anchovy	9,718,850	\$627,641
Pacific Sardine	3,258,365	\$667,149
Pacific Mackerel	3,056,272	\$800,895
Sablefish	2,879,288	\$4,734,080
Chilipepper Rockfish	2,216,886	\$1,420,034
Red Sea Urchin	2,130,789	\$7,476,765
Bocaccio Rockfish	1,538,767	\$935,183
Petrale Sole	1,492,852	\$1,788,001
Totals	166,896,789	\$136,049,046

Data as of 02/14/2025. *Note that landings and value are reported for the calendar year (January 1 – December 31). This may differ from seasonal landings for specific fisheries reported elsewhere. Data source: Department's Marine Region, Marine Fisheries Statistical Unit.

Bocaccio, *Sebastes paucispinus*, illustration by CDFW ES C. Makeyev



Commercial Fishing



Top Fisheries by Ex-Vessel Value

Fishery	Pounds	Ex-Vessel Value
Market Squid	126,430,905	\$67,854,320
Dungeness Crab	14,173,811	\$49,744,974
California Spiny Lobster	1,080,004	\$20,893,435
Red Sea Urchin	2,130,789	\$7,476,765
California Halibut	1,014,939	\$5,756,950
Sablefish	2,879,288	\$4,734,080
Spot Prawn	176,968	\$3,942,641
Yellow Rock Crab	765,516	\$1,801,066
Petrale Sole	1,492,852	\$1,788,001
Bluefin Tuna	288,453	\$1,712,489
Totals	150,433,530	\$165,704,725

Data as of 02/14/2025. *Note that landings and value reported over the calendar year (January 1 – December 31) This may differ from seasonal landings for specific fisheries reported elsewhere. Data source: Department's Marine Region, Marine Fisheries Statistical Unit



Top Groundfish Landings

Species	Pounds	Ex-Vessel Value
Nearshore ¹	393,809	\$2,472,275
Shelf and slope rockfish	4,804,414	\$4,210,159
Dover sole, thornyheads, sablefish (black cod)	4,193,491	\$6,919,095
Remaining flatfish ²	1,712,487	\$1,891,300
Other ³	421,814	\$442,516
Totals	11,526,014	\$15,935,345

¹ Includes nearshore rockfish, California scorpionfish, cabezon, greenlings and California sheephead.

² Includes arrowtooth flounder (turbot), butter sole, curfin sole, English sole, Pacific sanddab, petrale sole, rex sole, sand sole and starry flounder.

³ Includes all remaining species in the federal groundfish Fishery Management Plan.

Data Source: Department's Marine Landings Database System and includes landings reported through 02/14/2025. *Note that landings and value reported over the calendar year (January 1 – December 31) This may differ from seasonal landings for specific fisheries reported elsewhere

California spot prawn, *Pandalus platyceros*, and sablefish, *Anoplopoma fimbria* illustration by CDFW ES C. Makeyev



California Recreational Fisheries Survey Sampling

Data Collected from: 76,952 angler trips

Estimated Recreational Fishing Trips in Marine Waters: 2.1 million

Estimated Total Fish Caught: 4.2 million

Measurements Collected from: 78,450 fish

Data Source: Department's Marine Region, California Recreational Fisheries Survey. Data as of 02/11/2025.

Top Types of Fish Targeted by Recreational Anglers Based on Pounds of Fish Caught¹

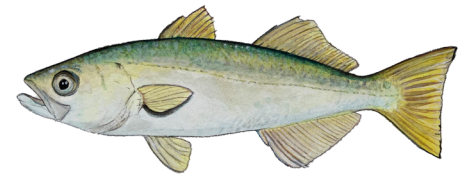
Rank	Type of Fish	Estimated Pounds of Fish Caught ¹
1	Tunas (bluefin, yellowfin, & albacore)	5,138,000
2	Rockfish, greenlings, and cabezon	2,144,000
3	Flatfish (California halibut, Pacific sanddab, Pacific halibut, soles, & starry flounder)	747,000
4	Lingcod	459,000
5	California scorpionfish	332,000
6	Sea Bass (barred sandbass, kelp bass, & spotted sand bass)	312,000
7	Striped bass	227,000
8	Yellowtail	164,000
9	Ocean whitefish	136,000
10	Croakers (White seabass, spotfin, white, & yellowfin croakers)	82,000

¹Fish Caught = fish kept and fish released dead, estimates are preliminary and may differ from what is used for fisheries management. Data source: CRFS estimates and data were extracted from RecFIN database at www.recfin.org and supplemented by CDFW Fisheries Analytics Project and Ocean Salmon Project. Highly Migratory catch from Commercial Passenger Fishing Vessels were summed from the Marine Log System. Data as of 02/11/2025.





Recreational Fishing



Total Recreational Licenses Sold and Fees Collected

License Type	Numbers Sold	Value
All Recreational Fishing Licenses ¹	1,550,979	\$71,326,100
Ocean Enhancement Validation ²	251,703	\$1,636,070
Spiny Lobster Report Card	33,593	\$377,921
Recreational Crab Trap Validation Stamps	36,663	\$100,823

¹Note that recreational fishing licenses are valid for ocean and inland fishing in California. ²Ocean Enhancement Validation stamps are required for ocean fishing south of Point Conception, Santa Barbara County. Data Source: Department's License and Revenue Branch, as of 2/11/2025. <https://wildlife.ca.gov/licensing/Statistics>

Top Types of Fish Targeted by Recreational Anglers Based on Fishing Trips

Rank	Trip-Type and Top Species Targeted ¹	Estimated Number of Angler Trips
1	Bottomfish: Rockfish, lingcod, California scorpionfish and ocean whitefish	603,000
2	Highly Migratory: Bluefin tuna, yellowfin tuna, albacore and dolphinfish (dorado)	417,000
3	Inshore: California halibut, barred surfperch, spotfin croaker, and redtail surfperch	342,000
4	Coastal Migratory: Yellowtail, chub (Pacific) mackerel, Pacific barracuda and Pacific bonito	91,000
5	Other Anadromous: Striped bass, white sturgeon	69,000

¹For each trip target: the top species are listed based on the estimated total catch in pounds. Data source: CRFS estimates and data were extracted from RecFIN database at www.recfin.org and supplemented by CDFW Fisheries Analytics Project and Ocean Salmon Project. Highly Migratory effort and catch from Commercial Passenger Fishing Vessels were summed from the Marine Log System. Data as of 02/11/2025.



Top: Queenfish, *Seriphus politus*. Bottom: Pacific hake, *Merluccius productus*, illustrations by CDFW ES C. Makeyev



Marine Region Highlights

Permitting

- A new Marine Permitting Project was established to improve efficiency and consistency of developing and implementing Experimental Fishing and Scientific Collecting Permits.

State Experimental Fishing Permits (EFPs)

- Total active EFPs: **5**
- Total EFP Amendments: **7**

Marine Scientific Collecting Permits (SCPs)

- Total SCPs Issued: **181**; Of those issued, for work within MPAs: **58**

Other Permits Issued

- Aquaculture Registrations: **41**
- Letters of Authorization (LOA): **10**
- Aquaria Permits: **137**
- Restricted species permits: **11**
- Incidental Take Permits issued: **2**
- Sea Otter Game Refuge Flyover Request LOAs issued: **10**

Artificial Reefs

- Secured **\$550,000** in funding from Ocean Protection Council to begin development of the California Artificial Reef Program (CARP) Plan, a programmatic guidance document that will direct the implementation of the CARP providing science-based direction on materials, design, siting function and performance standards. <https://wildlife.ca.gov/Conservation/Marine/Artificial-Reefs>

California Endangered Species Act (CESA) Memoranda of Understanding (MOU)

- ESA 2081(a) MOUs to permit take of CESA-listed marine species for scientific, educational or management purposes: **40** issued
- CESA 2081(a) MOU Amendments: **7** issued

Regulatory Activity

- State regulatory packages completed: **11**
- Reports submitted in support of federal regulatory activities: **56**

Dive Program

Total Dives: 816 **Total Dive Hours: 511**

Marine Region Vessels

The State Managed Finfish and Nearshore Ecosystem Program recently acquired a new research vessel (R/V), the R/V Nereocystis (“Nereo” for short). The R/V Nereo is a 14-foot Achilles inflatable vessel, based at the Marine Region’s Santa Rosa Field Office. The vessel will support field needs, primarily with efforts in Northern California to conduct research diving operations on collaborative kelp restoration projects and monitor commercial and recreational kelp harvest. Additionally, R/V Nereo will be deployed to inspect state water bottom aquaculture leases and other high priority bay and estuary resource needs, such as eelgrass and invasive species surveys.

The Marine Enforcement District in central California took delivery of Patrol Boat (P/B) Barracuda, a 74 x 27 ft aluminum catamaran patrol vessel. The vessel is equipped to handle a wide range of near coastal and offshore missions and will support partner agencies. An onboard air compressor and 500+ mile range will help support resource management programs. Missions will include multi-day patrols, commercial gear inspection and recovery, fishery enforcement, and marine protected area patrols. The new vessel replaces its 21-year old predecessor, P/B Steelhead. P/B Barracuda is home ported in Half Moon Bay.

Total days at sea for all Marine Region vessels: 189

• Goby	12 ft	• Surf Scoter	19 ft
• Sanddab	12 ft	• Megathura	21 ft
• Chilipepper	14 ft	• Smoothhound	25 ft
• Remora	18 ft	• Irish Lord	26 ft
• Ronquil	19 ft	• Mystinus	29 ft
• Roncador	19 ft	• Garibaldi	45 ft
• Pinto	19 ft		

P/B Barracuda on patrol. Photo courtesy of All American Marine.



Data Collection

- Staff read **2,449** coded wire tags and assigned ages to salmon collected from **6** surveys of inland spawning escapement across the Central Valley.
- Groundfish and Pacific halibut otoliths collected for use in future stock assessments: **1,281**
- Sardine, anchovy, Pacific mackerel, and jack mackerel samples collected and processed: **3,779**
- Sardin otolith pairs examined for age determination: **175**
- Market squid sampled collected and processed for biological data/to populate the egg escapement assessment: **4,735** across **158** landings sampled.
- Juvenile white abalone outplanted: **2,637**
- Pismo clam surveys counted **1,437** clammers and **986** measured.
- Barred sand bass dive survey transects: **202**
- Barred sand bass counted: **753**
- White seabass measured and scanned for coded-wire tags: **2,750**
- California halibut trawl surveys for spring and fall covered **9** sites, **79** tows, and **842** halibut measured.
- California halibut in Central California, **44** samples representing **1,082** fish
- California halibut in Southern California, **28** samples representing **223** fish

Marine Region Information Sharing

General Outreach

- Marine Region Related CDFW Press Releases: **22**
- Social Media Posts: **52**
- Responses to Public Inquiries Sent via email: **1,600+**
- Public Events Attended: **40**
- New Species-at-a-Glance Summaries: **6**

Marine Management News Blog

- Visits (Shares are not included): **80,000+**
- Blog post views: **114,000+**

Marine Protected Area Project

- Published **1** interactive [MPA Petitions StoryMap webpage](#)
- MPA Collaborative Meeting Presentations: **23**
- Distributed MPA outreach resources: **2,900+**



Data Sharing

- Confidential Data Sharing Agreements: **13**
- Non-Confidential Data Sharing Requests: **12**

Publications

- Perkins, N. R., Lauermann, A., Prall, M., Hosack, G. R., & Foster, S. D. (2024). [Diving deep into the network: Quantifying protection effects across California's marine protected area network using a remotely operated vehicle.](#) Conservation Science and Practice, 6(9), e13190.
- Haggerty, M. B., and C. Valle. 2024. [Incidental take of Giant Sea Bass in the gill net fishery.](#) California Fish and Wildlife Journal
- The [Pacific Herring Enhanced Species Report](#) (02/01/24).
- California Marine Species Information available at: <https://marinespecies.wildlife.ca.gov/>

The California Department of Fish and Wildlife receives federal financial assistance from the U.S. Fish and Wildlife Service. Under Title VI of the 1964 Civil Rights Act, Section 504 of the Rehabilitation Act of 1973, Title II of the Americans with Disabilities Act of 1990, the Age Discrimination Act of 1975, and Title IX of the Education Amendments of 1972, the U.S. Department of the Interior prohibits discrimination on the basis of race, color, national origin, age, sex, or disability. If you believe that you have been discriminated against in any program, activity, or facility, or if you need more information, please write to: Office of Diversity, Inclusion and Civil Rights U.S. Department of the Interior 1849 C Street, NW Washington, D.C. 20240

