



Abalone Harvest Risk Tolerance

March 13, 2025

Presented to:

Marine Resources Committee
CA Fish and Game Commission

Presented by:

Joanna Grebel
Invertebrate Program Manager
Marine Region



Outline

- History of Commercial Abalone Harvest
- Current Status of Abalone
- Red Abalone Recreational Fishery
- San Miguel Island
- Department Recommendations
- Next Steps



Commercial Harvest History

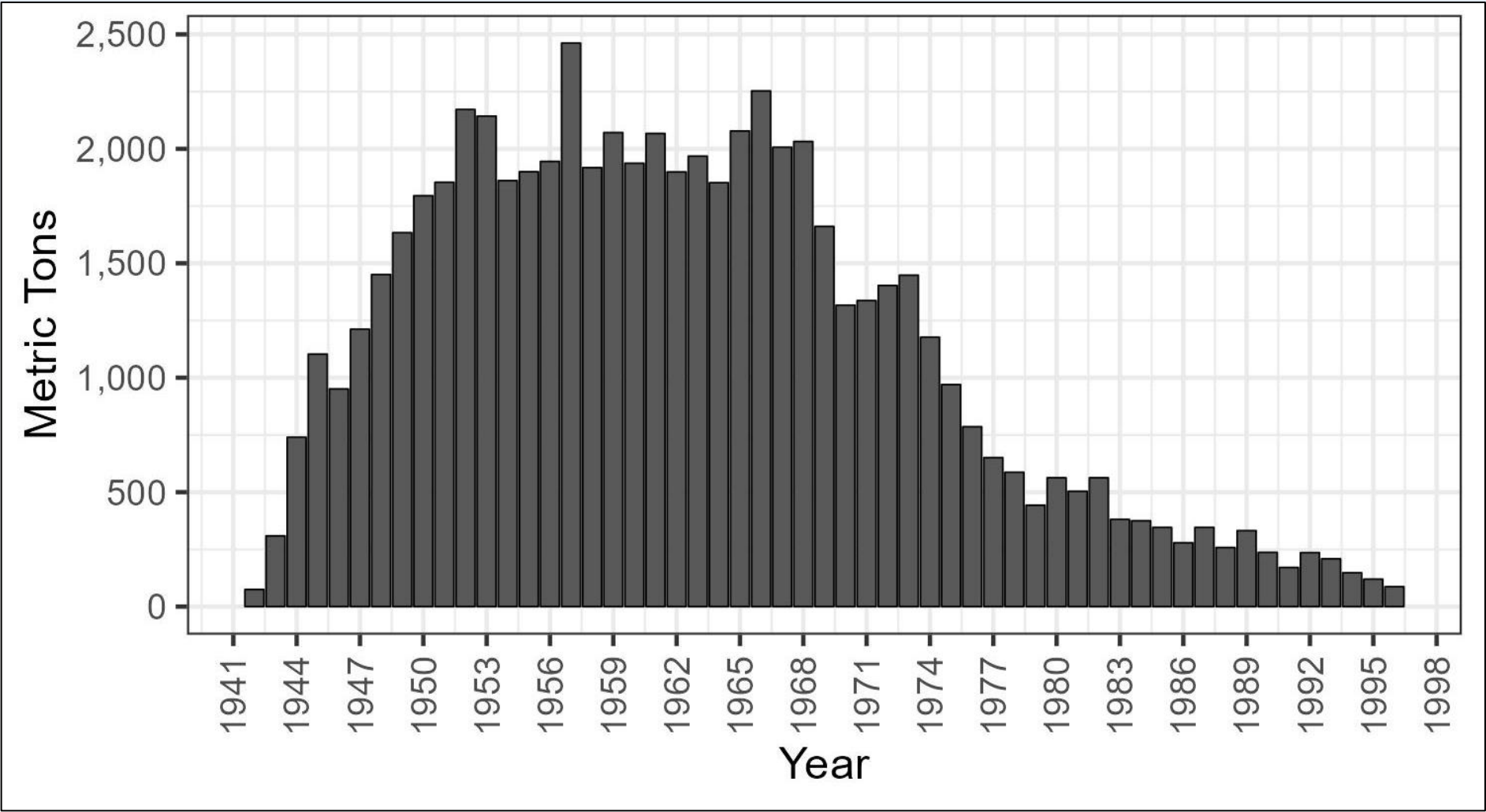
- Late 1800's-1940's: Beginning and growth of commercial fishery
- 50's-60's: Height of commercial fishery, steady landings
- 70's: Rapid decline in landings and serial depletion
- 80's-90's: Low, declining landings and closure of fishery in 1997



Abalone Shell Dump, Seaside, Calif. April 15, 1921. Photo: Monterey County Historical Society.

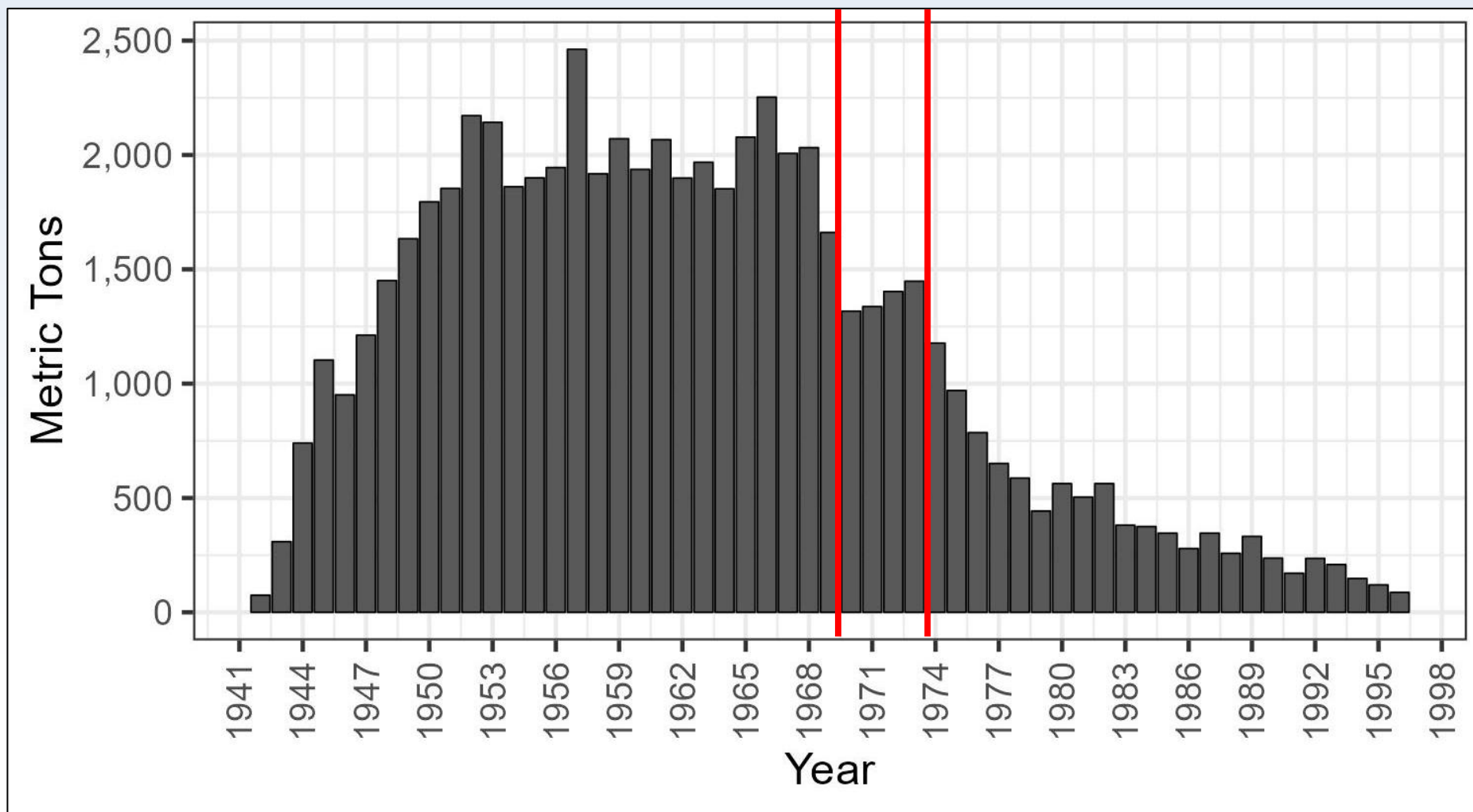


Commercial Abalone Landings



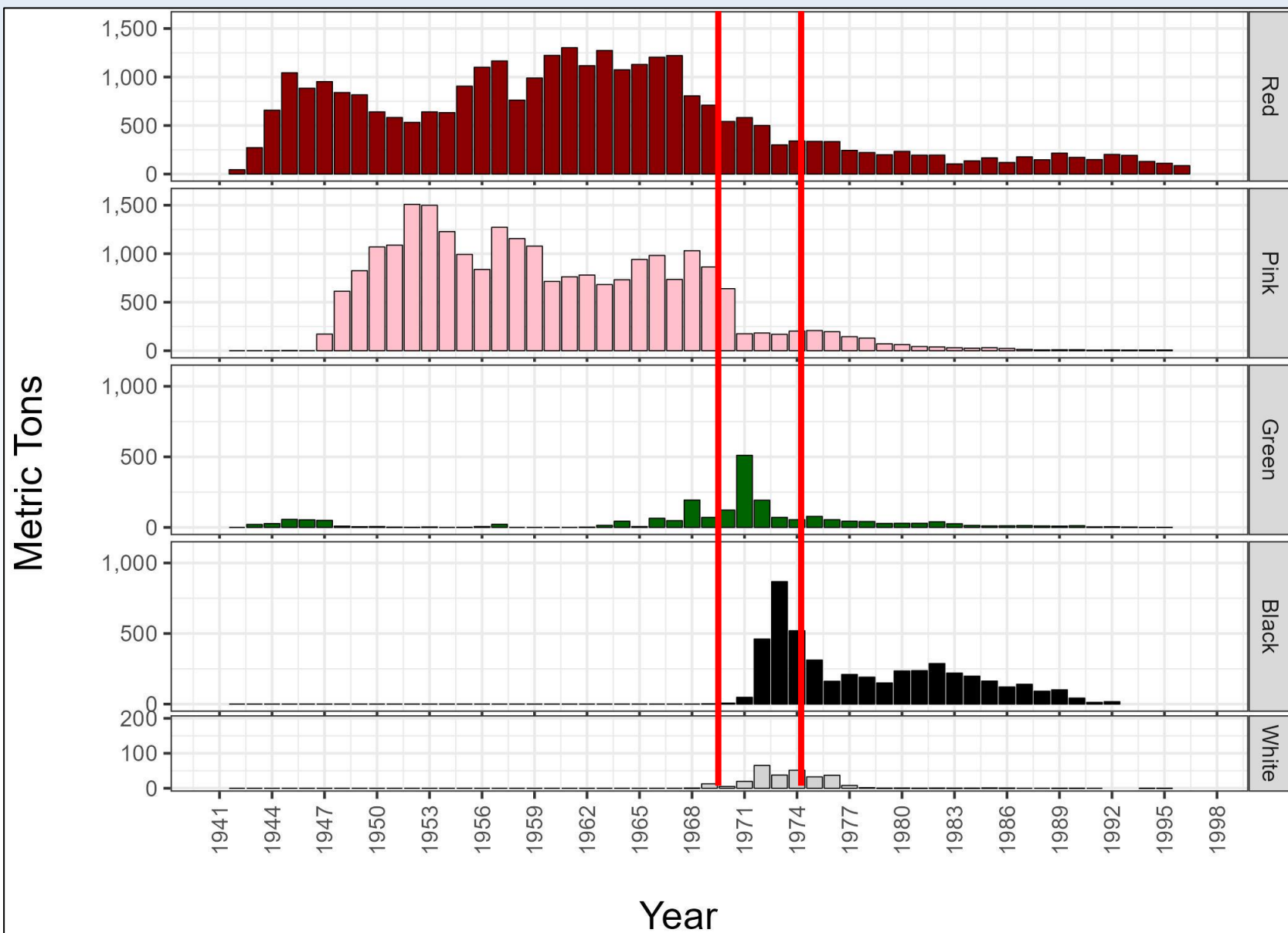


Commercial Abalone Landings- Cont.





Serial Depletion





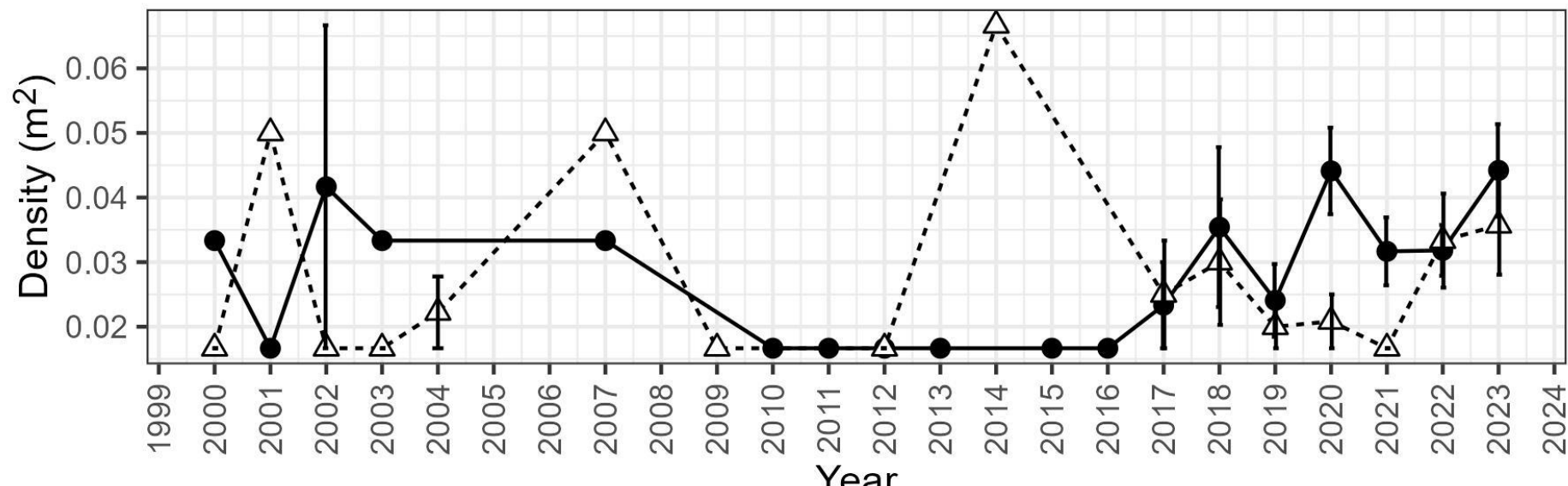
Current Status

- All 7 CA abalone species remain depleted
- White and black abalone are federally endangered and have federal recovery plans
- CDFW is a key partner supporting Section 6 grants for both species

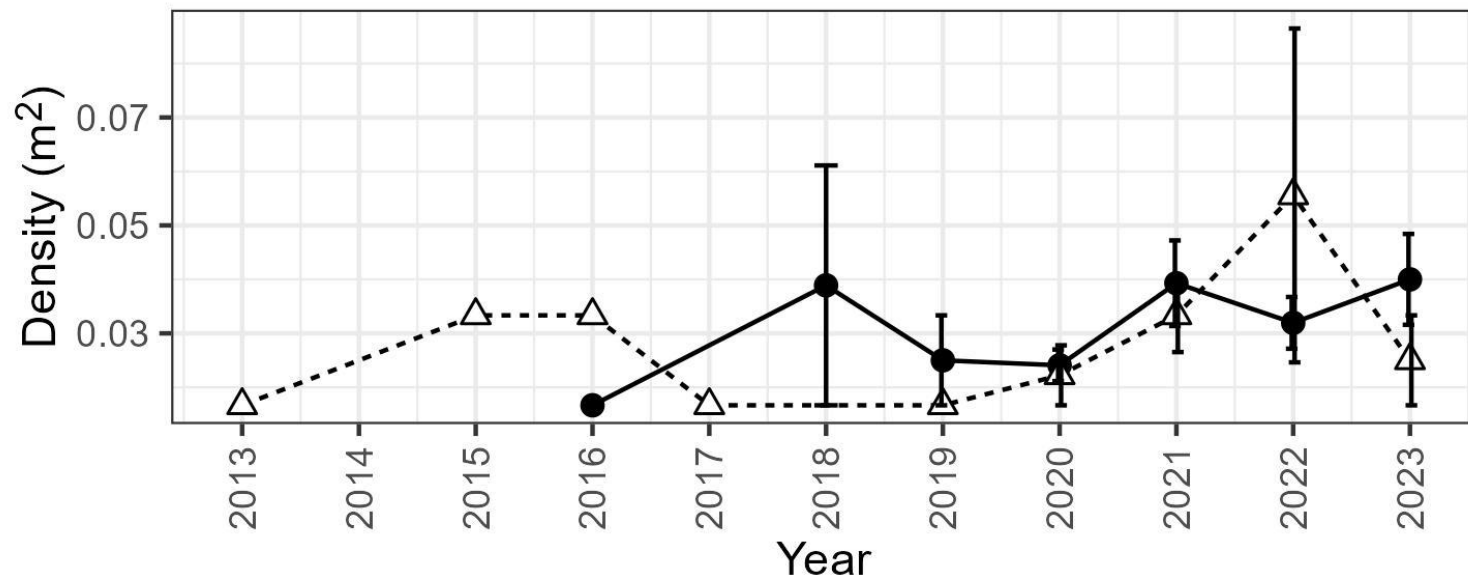




Current Status - Pink and Green Abalone



Pink



Site Status

● MPA

-△- reference

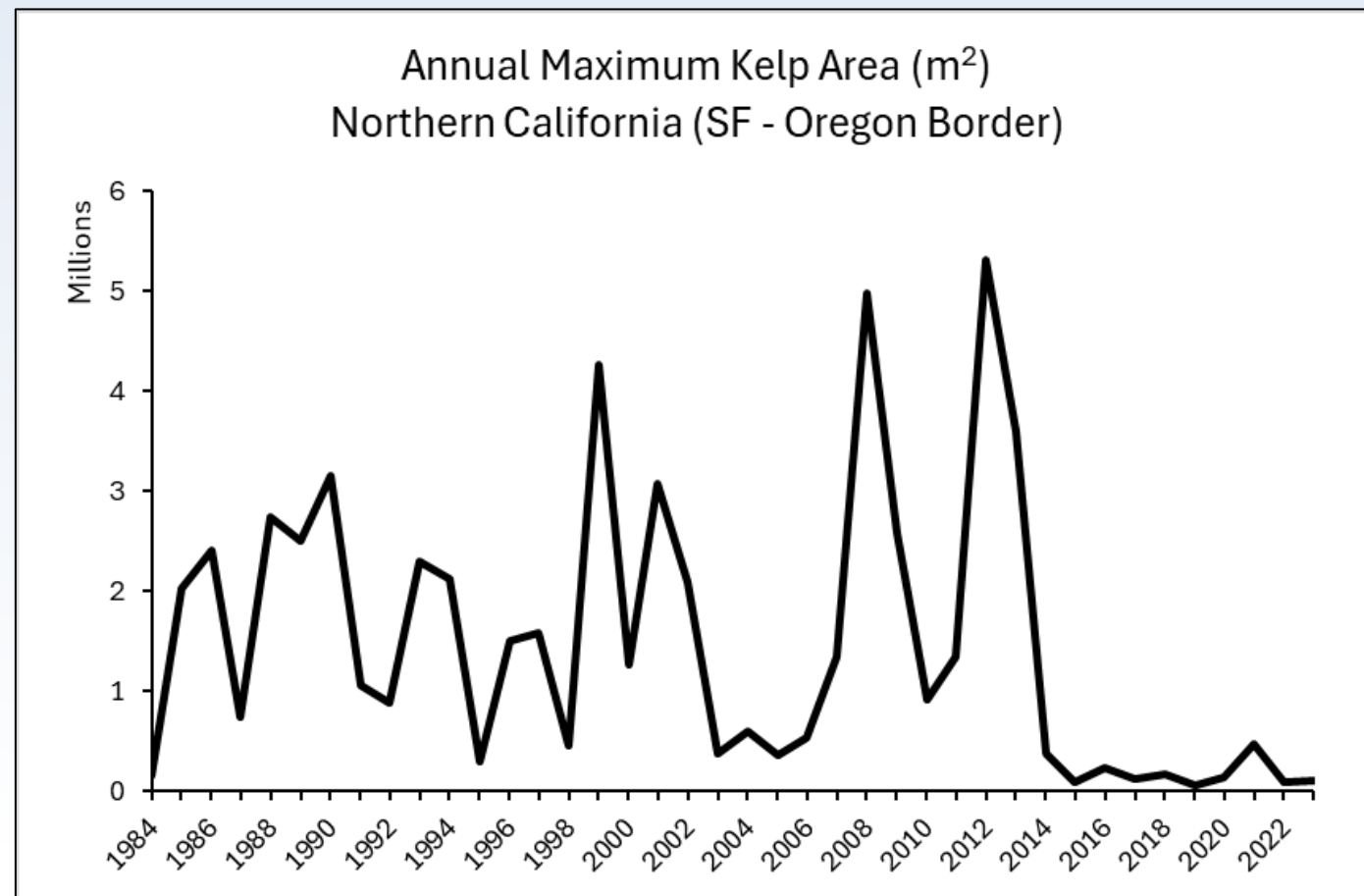
Green

Data Source: PISCO,
dataone.org



Current Status - Environmental Conditions

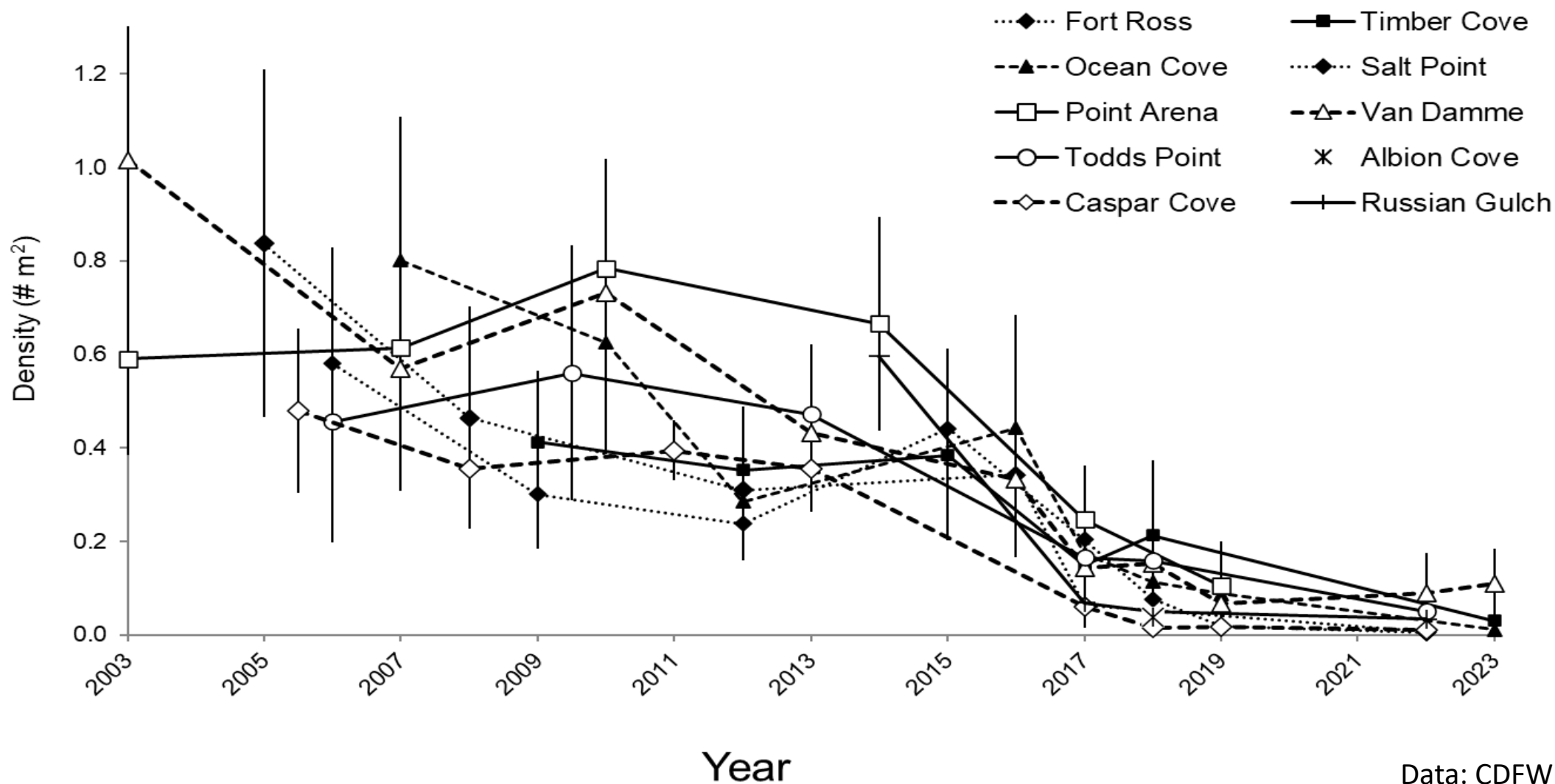
- Greater environmental variability
- Minimal kelp recovery



Data: Kelpwatch.org



Red Abalone Recreational Fishery



Data: CDFW



San Miguel Island

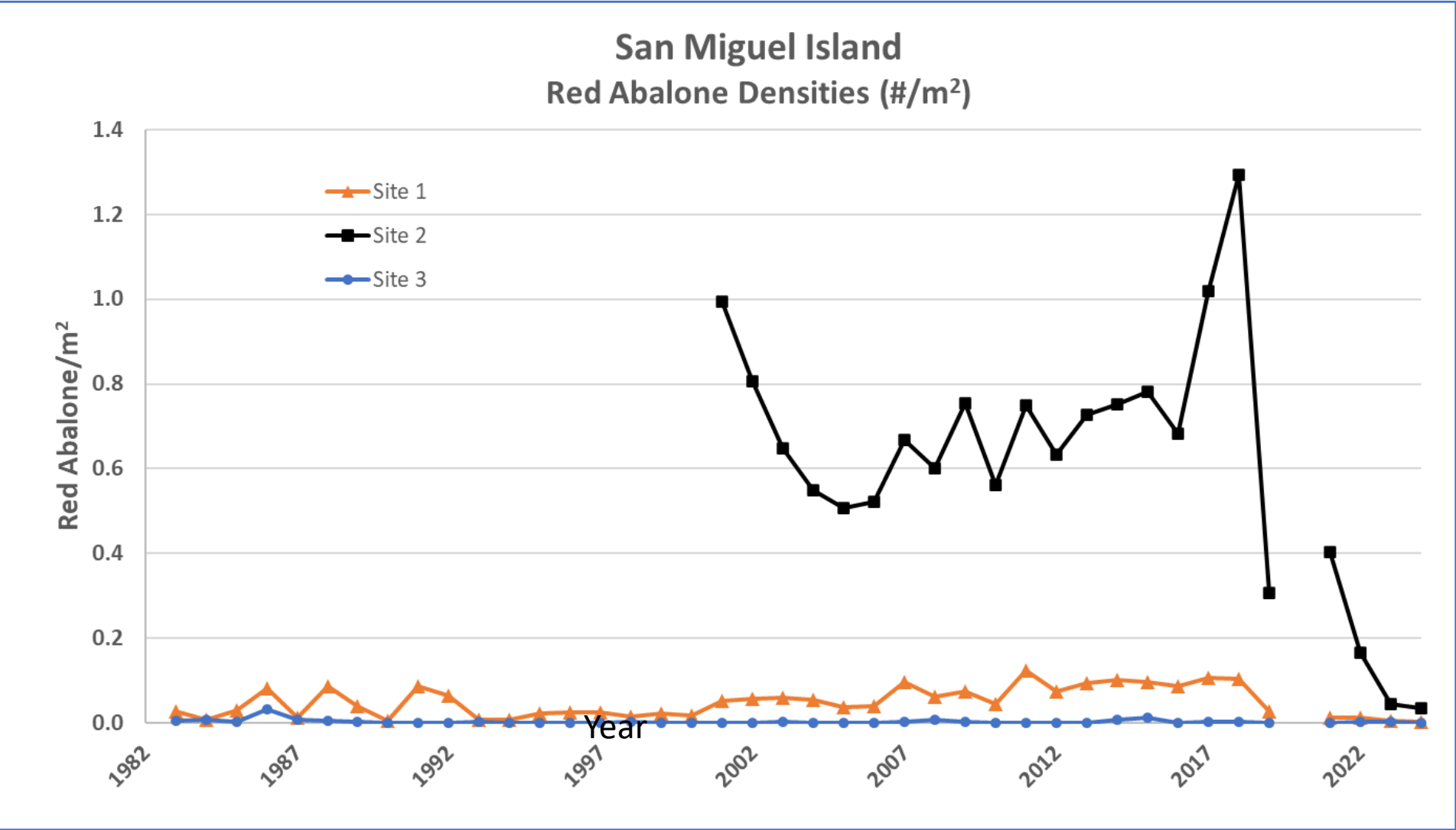
- Refuge for red abalone in Southern California
- Area of interest for test fishery



Photo: ESA



San Miguel Island - Abalone Status

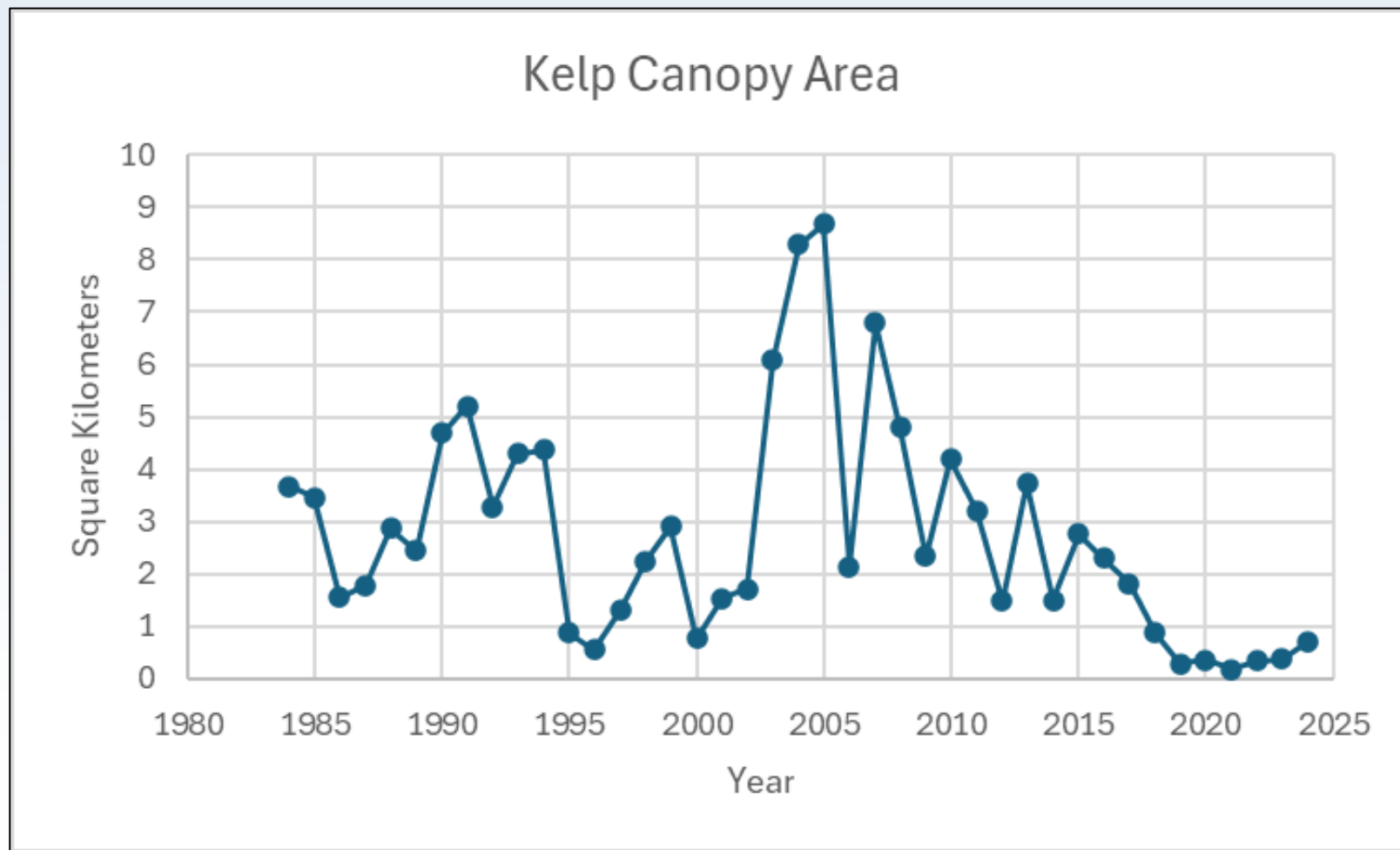


- Abalone density low at all locations

Data: National Park Service Kelp Forest Monitoring Program



San Miguel Island – Kelp Status



Kelp forest conditions at SMI have been poor over the past 8 years

Data: kelpwatch.org

Summary

- Abalone species statewide remain depleted
- Some signs of recovery
- Environmental variability expected to continue in the future



Photo: CDFW



Department Recommendations

- Focus on species recovery, not harvest opportunities
- Continue to monitor Kelp Recovery Management Plan (KRMP) process
- Build partnerships for abalone monitoring and recovery

Next Steps

- Discuss Recreational Red Abalone Fishery (next presentation)
- July MRC Meeting
 - Update on Red Abalone Recovery Planning Process
 - Future Data Collections



Thank You



Photo: CDFW

Questions: Abalone@wildlife.ca.gov