



Region 5 Barrier ID: W215 (Barrier).

Barrier Name: I-405 HOV Sepulveda Project.

Linear Infrastructure: I-405.

Geographic Area: Bisects the Santa Monica Mountains from Brentwood in the south to Studio City to the north.

Length: 4.50 km (2.79 mi).

Target Species: Mountain lion (*Puma concolor*), deer (*Odocoileus hemionus*), bobcat (*Lynx rufus*), striped skunk (*Mephitis mephitis*), spotted skunk (*Spilogale gracilis*), Virginia opossum (*Didelphis virginiana*), raccoon (*Procyon lotor*), gray fox (*Urocyon cinereoargenteus*), coyote (*Canis latrans*).

Connectivity Concerns: I-405 bisects an important linkage for wildlife within the Santa Monica Mountains. A construction project was implemented to add a high occupancy vehicle (HOV) lane in the northbound direction from the intersection with I-10 in West Los Angeles to the intersection with US-101 in Sherman Oaks. As part of this construction project, the National Park Service in collaboration with the California Department of Transportation evaluated wildlife use of both potential crossing points and the surrounding natural areas before, during, and after construction. Specifically, monitoring 4 potential wildlife crossing points: Mulholland Bridge, Skirball Bridge, Bel Air Crest Underpass and Sepulveda Underpass for wildlife movement from October 2008 to June 2015. Construction in the study area lasted nearly 5 years and affected the only 4 potential wildlife crossing locations identified in the study area, Mulholland Bridge, Skirball Bridge, Bel Air Crest Underpass, and Sepulveda Underpass. Wildlife connectivity across I-405 was reduced, with both the number of species using crossings and wildlife detection rates on crossings declining from before to after construction.

Remediation Goals: The limited use of the crossings by monitored wildlife makes it likely that to improve the likelihood of all wildlife to cross I-405, significant improvements would have to be implemented, such as a crossing designated for wildlife. Other improvements would be to make all fences that separate adjacent habitat from the crossing structures permeable; restore habitat in areas adjacent to the crossings; restore or improve areas next to the crossings that were used for construction activities; reduce lighting where possible; improve cover for wildlife on bridges and underpasses; and improve stepping-stones between Sepulveda Blvd. and I-405 in areas near the crossing structures.

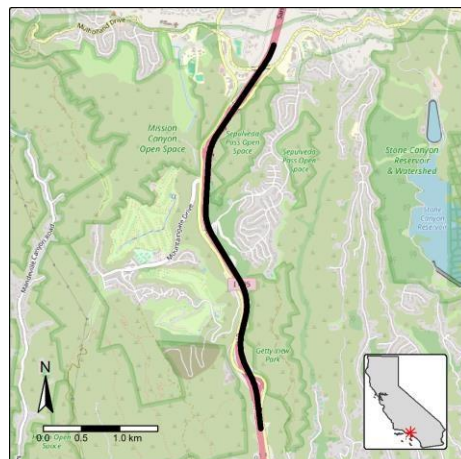


Figure: I-405 HOV Sepulveda Project is a Region 5 wildlife connectivity barrier.