



Region 5 Barrier ID: W216 (Barrier).

Barrier Name: CR-S2.

Linear Infrastructure: San Diego County Road S2.

Geographic Area: Near Agua Caliente Airport in Carrizo Valley.

Length: 1.04 km (0.65 mi).

Target Species: Peninsular population of desert bighorn sheep (*Ovis canadensis nelsoni*).

Connectivity Concerns: San Diego County Road S2 bisects an important linkage for the peninsular population of desert bighorn sheep within the Santa Monica Mountains. This section of CR-S2 is a roadkill hotspot with multiple sheep being hit and killed over the years along with having GPS movement data to show sheep are crossing along this segment.

Remediation Goals: Find areas of highest usage/risk to wildlife. Increased signage and overcrossing in this section of CR-S2.

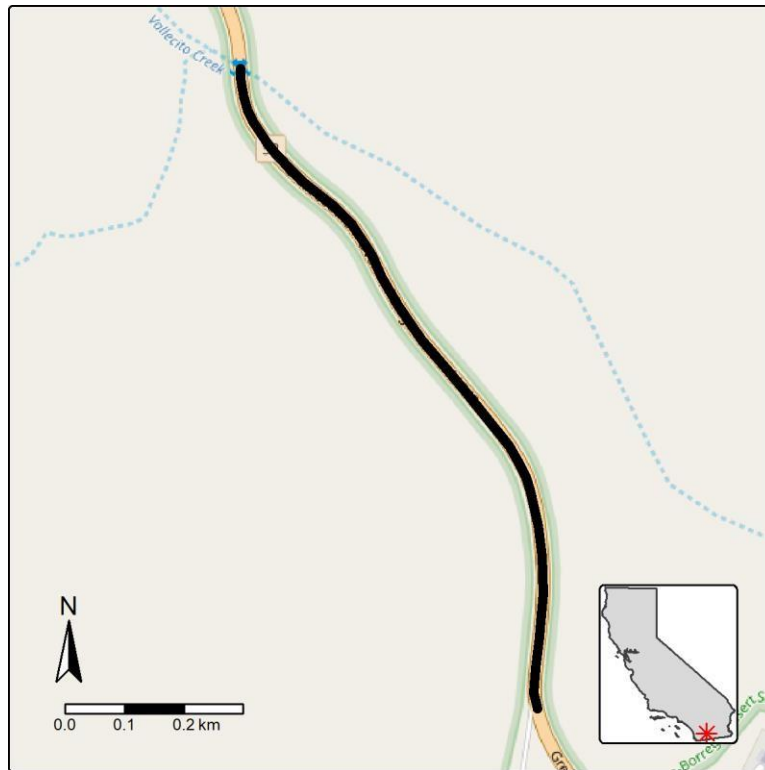


Figure: San Diego County Road S2 is a Region 5 wildlife connectivity barrier.