



Region 5 Barrier ID: W231 (Barrier).

Barrier Name: I-5 Sierra Madre to Castaic Ranges.

Linear Infrastructure: I-5.

Geographic Area: Bisects the linkage of Sierra Madre to Castaic Ranges within Los Padres National Forest. Castaic Lake is to the east and Pyramid Lake is to the west. Runs from Santa Clarita to Caswell.

Length: 41.20 km (25.6 mi).

Target Species: Mountain lion (*Puma concolor*), deer (*Odocoileus hemionus*), black bear (*Ursus americanus*), striped skunk (*Mephitis mephitis*), spotted skunk (*Spilogale gracilis*), Virginia opossum (*Didelphis virginiana*), raccoon (*Procyon lotor*), gray fox (*Urocyon cinereoargenteus*).

Connectivity Concerns: The I-5 through this segment is a major barrier to wildlife movement, and there are likely only two to four existing bridges (that also carry vehicles) in the entire study area that may be functioning, at some level, for wildlife movement. The Sierra Madre-Castaic linkage is vitally important for restoring gene flow to southern California mountain lion populations. This section of the I-5 is a roadkill hotspot with multiple mountain lions being hit and killed over the years. There are also some development projects in the works along this segment, so land acquisition is an important thing to consider.

Remediation Goals: Restore functional connectivity across I-5 between the Sierra Madre and Castaic Ranges to support: day-to-day movements of wildlife seeking food, shelter, or mates; juvenile dispersal; seasonal migration, healthy mixing of genes among populations, recolonizing unoccupied habitat after a local population goes extinct, and for species to shift their geographic range in response to global climate change. To accomplish this, we will need to find areas of highest usage/risk to wildlife. We aim to expand and enhance existing infrastructure such as culverts and creek bridges, add new under/over-crossings and wildlife exclusion fencing. Removing barriers to wildlife movement across I-5 would reconnect extensive protected lands and provide measurable benefits to a wide diversity of natural communities and numerous native species.

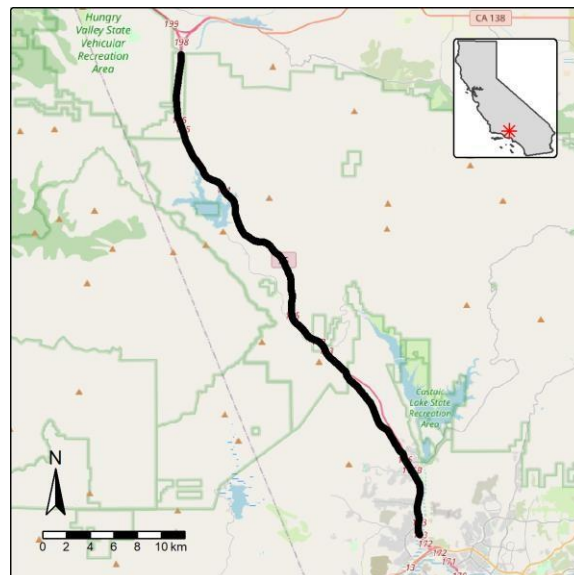


Figure: I-5 Sierra Madre to Castaic Ranges is a Region 5 wildlife connectivity barrier.