



Region 6 Barrier ID: W218 (Priority Barrier).

Barrier Name: I-40 bighorn sheep crossing through Marbles/Bristols

Linear Infrastructure: I-40.

Geographic Area: Mojave Desert, San Bernardino County, Caltrans District 8.

Length: 39.86 km (24.77 mi).

Target Species: Desert bighorn sheep (*Ovis canadensis nelsoni*).

Connectivity Concerns: I-40 is a nearly complete barrier to migration between subpopulations of desert bighorn sheep.

Remediation Goals: An overcrossing and exclusion fencing, similar to those being installed on I-15 would be needed because desert bighorn tend not to use undercrossings.

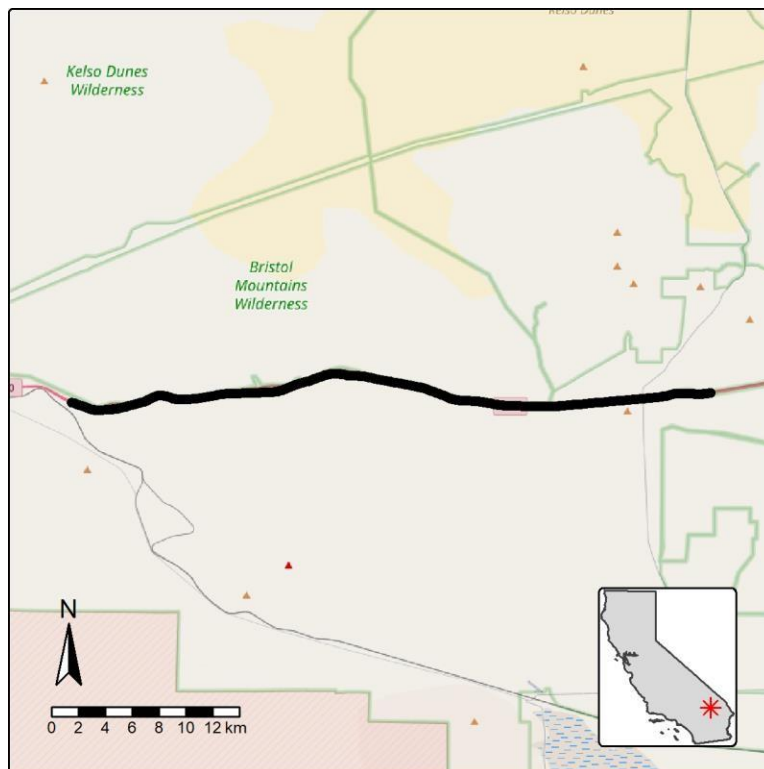


Figure: Barrier W218 along I-40 in San Bernardino County.