



Region 6 Barrier ID: W227 (Priority Barrier).

Barrier Name: SR-62 through Morongo Valley.

Linear Infrastructure: SR-62.

Geographic Area: Transverse/Peninsular Ranges, San Bernardino, Riverside County, Caltrans District 8.

Length: 33.23 km (20.65 mi).

Target Species: Peninsular population of desert bighorn sheep (*Ovis canadensis nelsoni*), mountain lion (*Puma concolor*), deer (*Odocoileus hemionus*), bobcat (*Lynx rufus*), gray fox (*Urocyon cinereoargenteus*).

Connectivity Concerns: This separates the San Bernardino Mountains from the Little San Bernardino Mountains. This is a barrier for several medium/large bodied animals and isolates elevational (climate-change) migration routes from the Little San Bernardino. This has been identified by a SC Wildlands connectivity model as an important corridor.

Remediation Goals: Overcrossings, undercrossings and exclusion fencing are our goals. These focus on two specific areas, Yucca grade and Morongo grade.

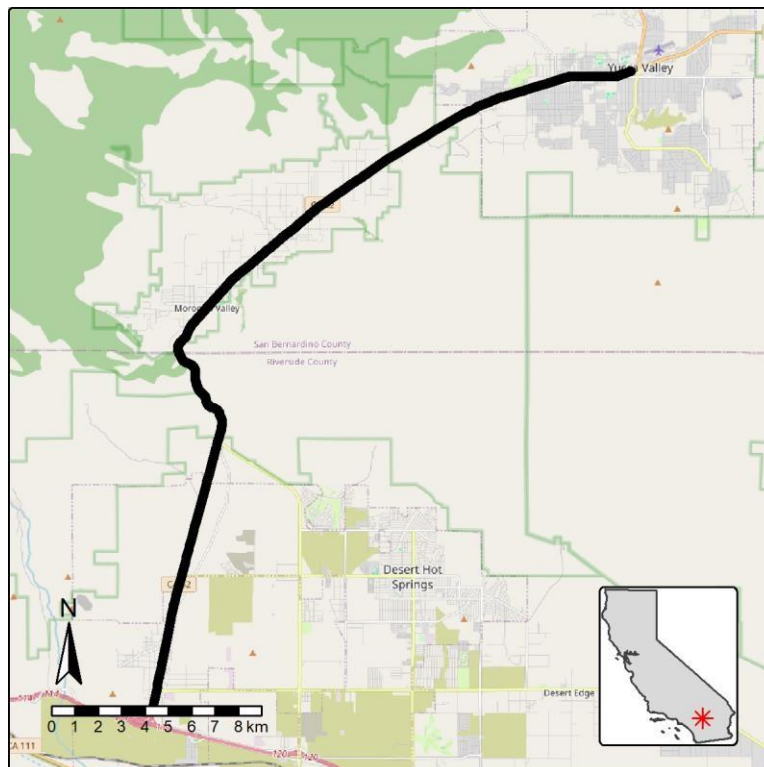


Figure: Barrier W227 along SR-62 through Morongo Valley in San Bernardino County.