



**Region 2 Barrier ID: W001 (Top Priority Barrier).**

**Barrier Name:** US-395 Janesville including Bass Hill Wildlife Area.

**Linear Infrastructure:** US-395.

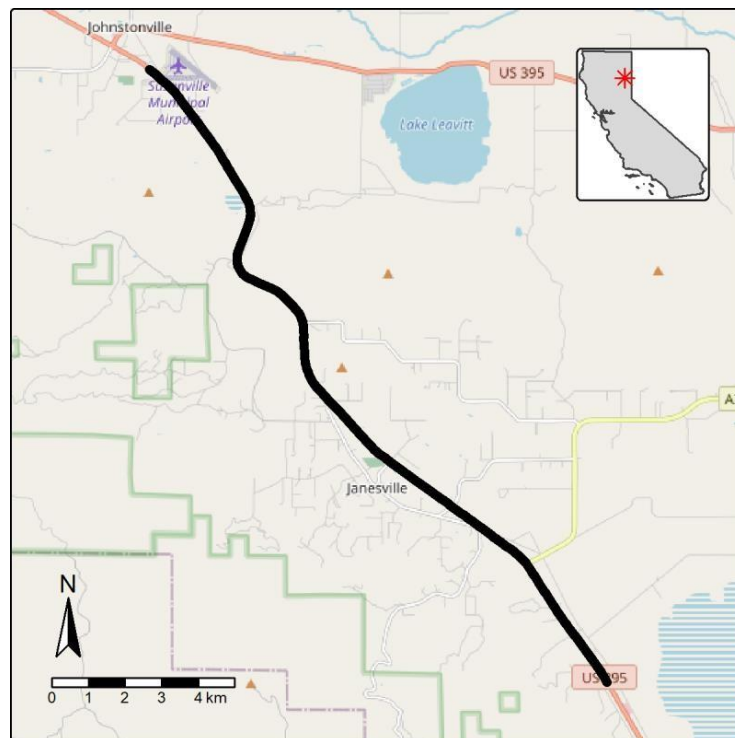
**Geographic Area:** Lassen County, US-395. Located in Region 1, but managed by Region 2 due to geographic location.

**Length:** 17.03 km (10.58 mi).

**Target Species:** Deer (*Odocoileus hemionus*), mountain lion (*Puma concolor*), pronghorn (*Antilocapra americana*), mesocarnivores.

**Connectivity Concerns:** The barrier completely disrupts a linkage identified in a species movement study, regional connectivity study, or Conceptual Area Protection Plan, or prevents movement between or within important habitat blocks. It affects high-priority ungulate migration corridors (e.g., Secretary Order 3362 priority areas) or bisects such corridors. Recent data (within the past 5 years) document the barrier's impact, such as roadkill. The barrier also affects important movement corridors for sensitive or high-priority species, as identified in species movement studies, population viability analyses, or genetic studies. Data shows roadkill hotspots, significant or consistent wildlife mortality events, or mortality that could lead to population-level impacts for one or more species.

**Remediation Goals:** Overpass or underpass, fencing, and jump-outs.



**Figure:** Barrier W001, US-395 through Janesville.