



**Region 2 Barrier ID: W011 (Remediated).**

**Barrier Name:** I-80, Donner Summit, bisects Sierra Nevada.

**Linear Infrastructure:** I-80.

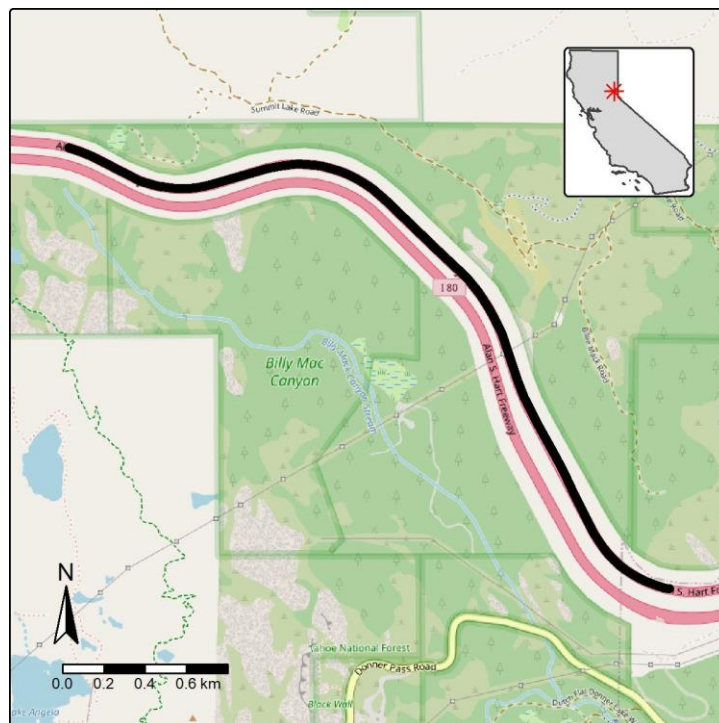
**Geographic Area:** Nevada County, I-80, mileposts R6.5 - 8.5.

**Length:** 3.12 km (1.94 mi).

**Target Species:** Deer (*Odocoileus hemionus*), mountain lion (*Puma concolor*), black bear (*Ursus americanus*), gray wolf (*Canis lupus*), and elk (*Cervus canadensis*)

**Connectivity Concerns:** Formerly considered a barrier to movement. Caltrans created a fenced underpass near Donner summit in 2022, resulting in the barrier being classified as remediated.

**Remediation Goal:** No further remediation plans at this time. Post-remediation monitoring is ongoing.



**Figure:** I-80 at Donner Summit, bisecting Sierra Nevada is a remediated Region 2 wildlife connectivity barrier.