



Region 1 Barrier ID: W009 (Priority Barrier).

Barrier Name: SR-139 Perez to jump scales.

Linear Infrastructure: SR-139.

Geographic Area: Modoc County, between Perez and Copic.

Length: 16.11 km (10.01 mi).

Target Species: Deer (*Odocoileus hemionus*), pronghorn (*Antilocapra americana*), gray wolf (*Canis lupus*), mesocarnivores.

Connectivity Concerns: The barrier significantly disrupts (>50%) a linkage identified in a species movement study, regional connectivity study, or Conceptual Area Protection Plan, or significantly disrupts connectivity between or within important habitat blocks. It bisects an ungulate migration corridor that has been mapped based on GPS collar data or expert knowledge. Some evidence indicates sensitive or high priority species present that may be impacted by the barrier. Expert knowledge or data indicates wildlife mortality of two or more species, but population-level impacts not expected.

Remediation Goals: Create vegetated overpasses and/or fencing.

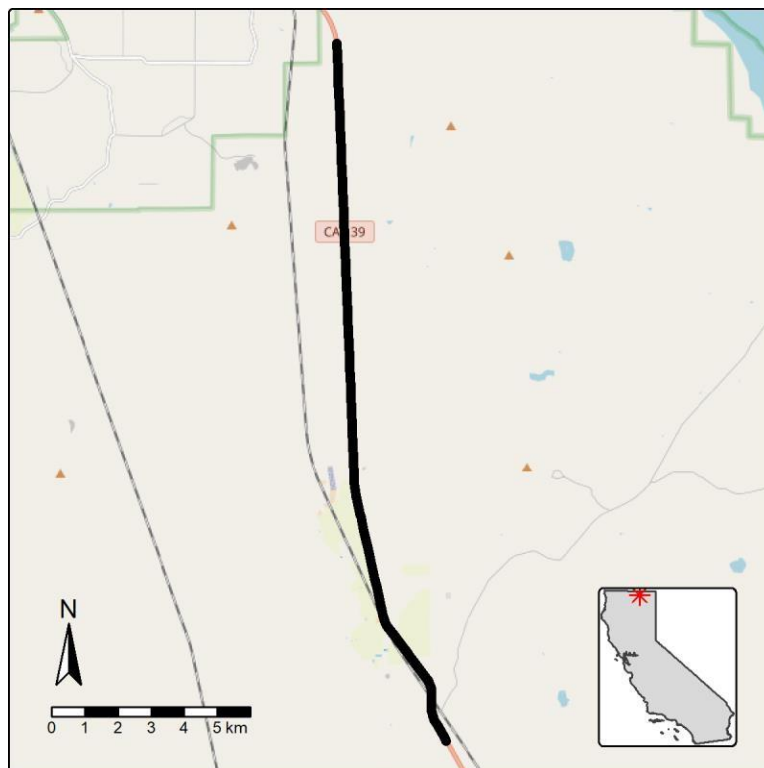


Figure: Barrier W009, on SR-139 between Perez and Copic in Modoc County.