



Region 2 Barrier ID: W014 (Barrier).

Barrier Name: SR-20 junction with SR-16.

Linear Infrastructure: SR-20.

Geographic Area: Colusa County, the intersection of SR-20 and SR-16 at Bear Creek.

Length: 1.30 km (0.81 mi).

Target Species: Tule elk (*Cervus canadensis nannodes*).

Connectivity Concerns: SR-20 meets SR-16 at Bear Creek where tule elk have several linear barriers converging in one place. California Department of Fish and Wildlife collar data indicates that there is little movement across the highways in this area. The endemic tule elk have already been close to extirpation and is genetically vulnerable.

Remediation Goals: Enhance the bridge over Bear Creek to promote wildlife connectivity. Topography and the target species indicate creating a new overpass and wildlife exclusion fencing where feasible.

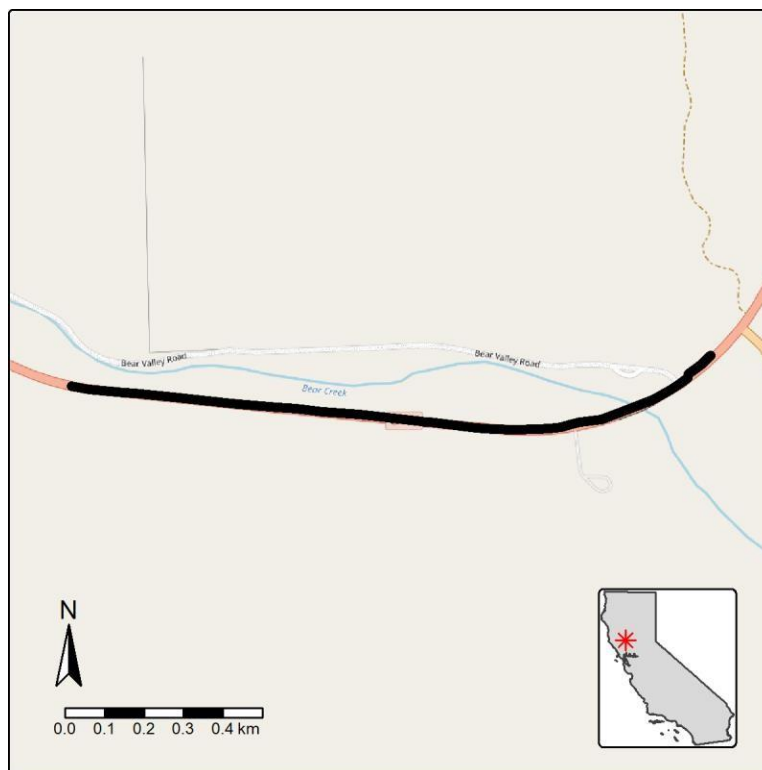


Figure: SR-20 at SR-16 and Bear Creek is a Region 2 wildlife connectivity barrier.