



Region 2 Barrier ID: W016 (Barrier).

Barrier Name: SR-20 Cache Creek.

Linear Infrastructure: SR-20.

Geographic Area: Lake County, from Grizzly Canyon along Cache Creek to Phipps Creek Elk Viewing Station.

Length: 4.21 km (2.62 mi).

Target Species: Tule elk (*Cervus canadensis nannodes*), deer (*Odocoileus hemionus*), wild pig (*Sus scrofa*), mountain lion (*Puma concolor*).

Connectivity Concerns: SR-20 runs along Cache Creek cutting off access to the creek from the west side. California Department of Fish and Wildlife collar data indicates that there is little movement across the highway in this area, and it has also been the site of animal vehicle collision. The endemic tule elk have already been close to extirpation and is genetically vulnerable.

Remediation Goals: Expand and enhance existing infrastructure such as culverts and creek bridges and use wildlife exclusion fencing to direct wildlife.

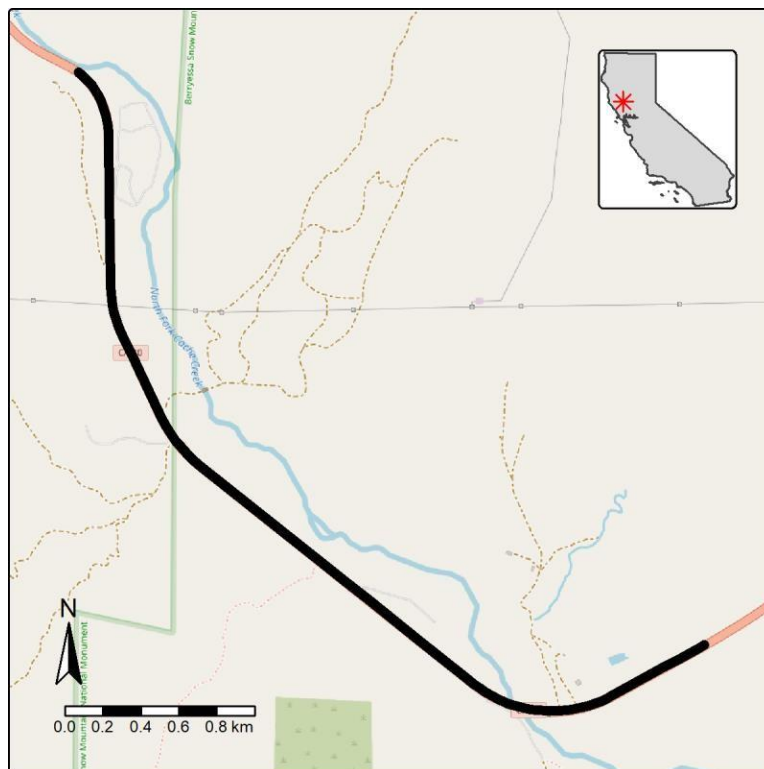


Figure: SR-20 along Cache Creek is a Region 2 wildlife connectivity barrier.