



Region 2 Barrier ID: W017 (Barrier).

Barrier Name: US-395 Sierra County.

Linear Infrastructure: US-395.

Geographic Area: Sierra County, from Bordertown at the Nevada state line to the Sierra County line.

Length: 4.92 km (3.05 mi).

Target Species: Deer (*Odocoileus hemionus*), mountain lion (*Puma concolor*), pronghorn (*Antilocapra americana*).

Connectivity Concerns: This stretch of US-395 has three bridge underpasses, but the fence was extended several miles south to the state line and this causes wildlife to have to walk the fence for a long time to find the first crossing. These are Interstate, migratory mule deer in the Loyalton-Truckee deer herd who need to cross the highway annually for spring and fall migration.

Remediation Goals: Enhance existing infrastructure (cattle chute) or add an overpass within the fence to allow all species to cross US-395.

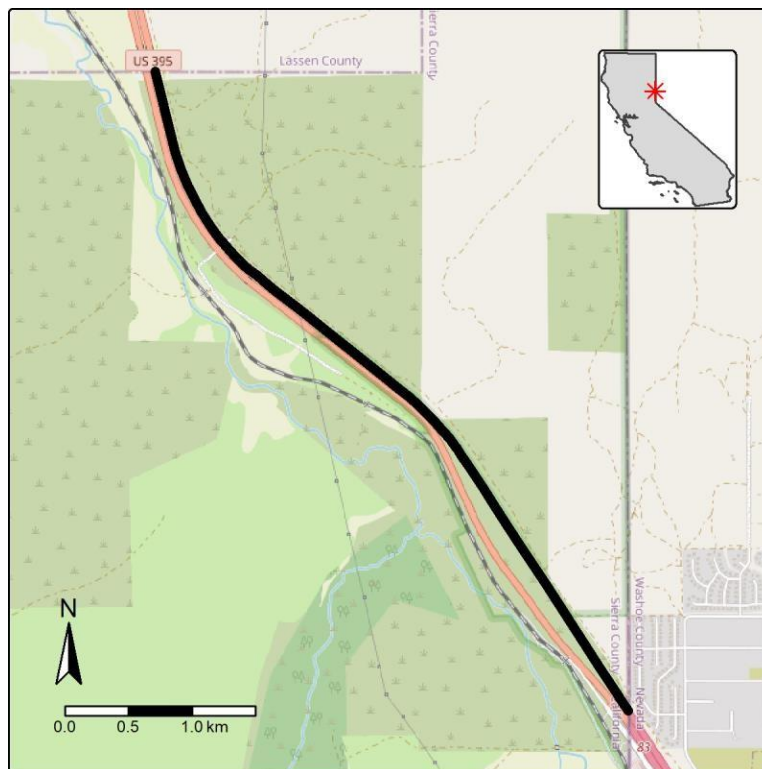


Figure: US-395 from Bordertown North, in the new fence section is a Region 2 wildlife connectivity barrier.