



Region 2 Barrier ID: W019 (Barrier).

Barrier Name: SR-4 Alpine County, Bear Valley to Kinney Lake.

Linear Infrastructure: SR-4.

Geographic Area: Alpine County, SR-4 Bear Valley at the Alpine County line to Kinney Lake.

Length: 25.74 km (16.00 mi).

Target Species: Deer (*Odocoileus hemionus*), mountain lion (*Puma concolor*), black bear (*Ursus americanus*), gray wolf (*Canis lupus*).

Connectivity Concerns: This stretch of SR-4 has observed animal vehicle collision with few places to get under they highway. Migratory deer from the Carson River and Railroad Flat deer herds both occupy this elevation and may attempt to cross the highway for daily needs on summer range, or during annual migration in the spring and fall. Bears and other small mammals have also been struck in this section. This elevation is important for climate refugia.

Remediation Goals: Expand and enhance existing infrastructure such as culverts and creek bridges, add new wildlife crossing structures and wildlife exclusion fencing.

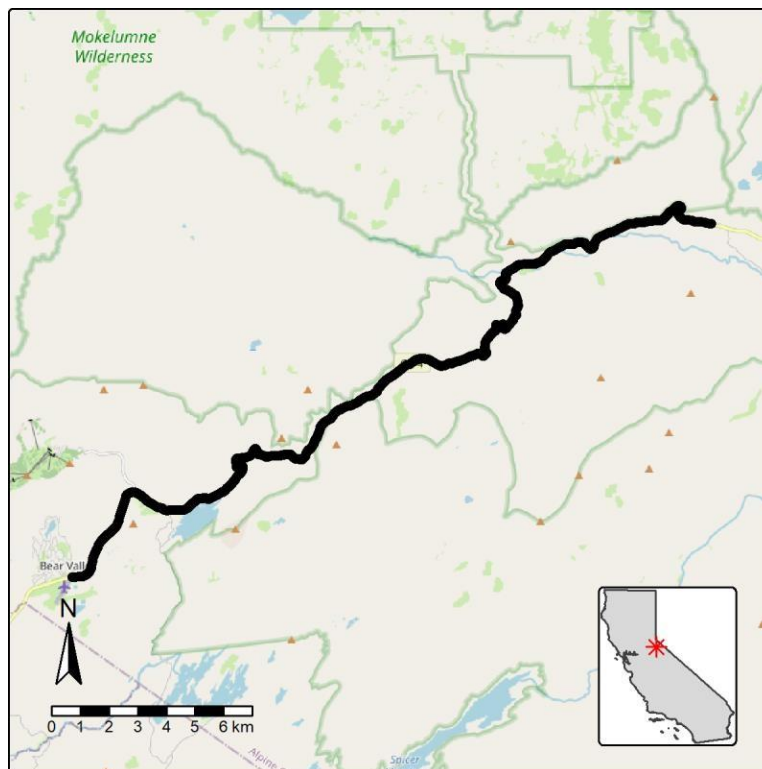


Figure: SR-4 from the Alpine County line at Bear Valley to Kinney Lake is a Region 2 wildlife connectivity barrier.