



Region 3 Barrier ID: W021 (Priority Barrier).

Barrier Name: SR-1 Santa Cruz long-toed salamander Rio Del Mar/Buena Vista.

Linear Infrastructure: SR-1.

Geographic Area: Santa Cruz.

Length: 8.39 km (5.21 mi).

Target Species: Santa Cruz long-toed salamander (*Ambystoma macrodactylum croceum*).

Connectivity Concerns: SR-1 bisects an already small complex of metapopulations, isolating them from each other. Concerns include restricted gene flow, risk of local extirpation, climate change, and loss/lack of connectivity between upland and pond habitats for breeding.

Remediation Goals: A total of four undercrossing sites have been identified. Currently one site at milepost 5.11 is planned and funded and Caltrans will install a new culvert designed for Santa Cruz long-toed salamander. A second site at milepost 6.88 is in the planning phase and is unfunded. Goals are to add three to four undercrossings with suitable and protected habitat on both sides, with connections to existing metapopulations.

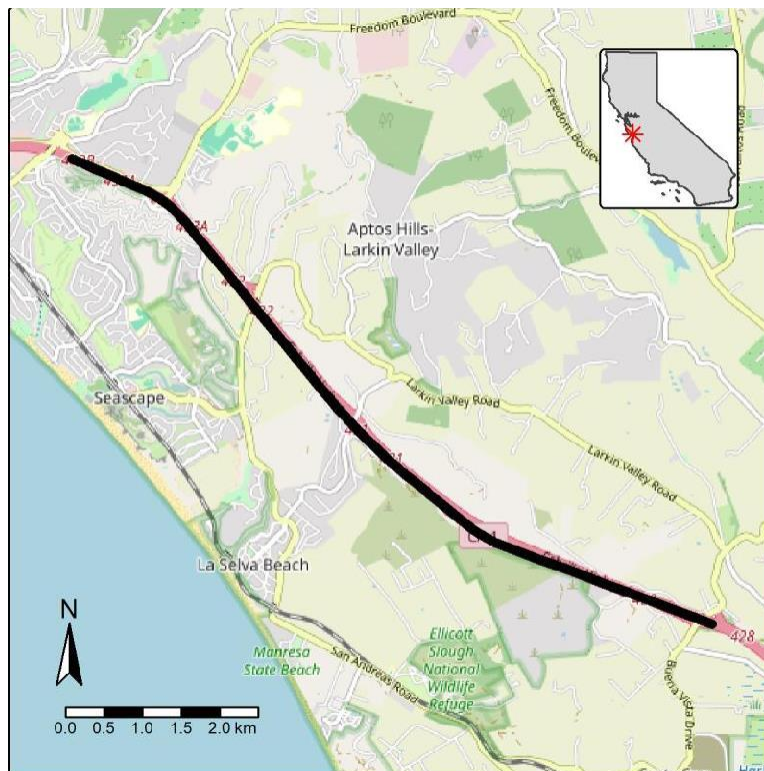


Figure: Barrier W021 along SR-1 in Santa Cruz.