



Region 3 Barrier ID: W022 (Priority Barrier).

Barrier Name: US-101 Metcalf/Burnett.

Linear Infrastructure: US-101.

Geographic Area: Coyote Valley, Santa Clara County.

Length: 11.24 km (6.98 mi).

Target Species: American badger (*Taxidea taxus*), California red-legged frog (*Rana draytonii*), California tiger salamander (*Ambystoma californiense*), mountain lion (*Puma concolor*), deer (*Odocoileus hemionus*), Northwestern pond turtle (*Actinemys marmorata*), mesocarnivores.

Connectivity Concerns: This is one of five barriers in Coyote Valley that have been extensively studied. Coyote Valley narrowly connects the Diablo Range with the Santa Cruz Mountains. There are preserved natural areas on both sides of the valley. The main concern is high road mortality as wildlife attempts to access these areas.

Remediation Goals: A Wildlife Connectivity Branch Grant provides the funding for Coyote Valley Wildlife Connectivity Planning, which is assessing the current infrastructure and developing plans for undercrossings, overcrossings, directional fencing, and/or existing infrastructure improvements. Goals are to identify, plan, fund, and build these crossings and to improve existing infrastructure.

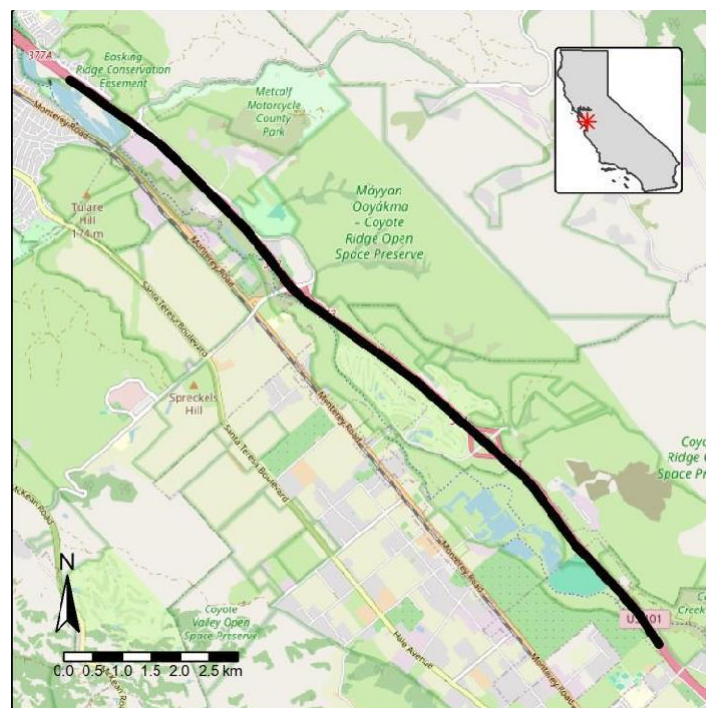


Figure: Barrier W022 along US-101 in Santa Clara County.