



**Region 6 Barrier ID: W132 (Barrier).**

**Barrier Name:** US-395 Kramer Junction to Victorville.

**Linear Infrastructure:** US-395.

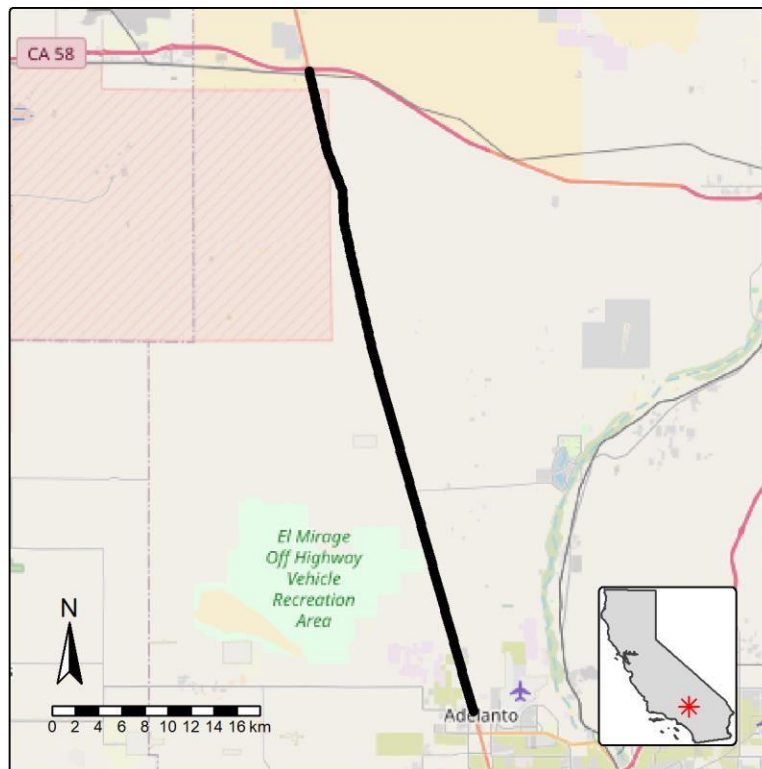
**Geographic Area:** US-395 corridor San Bernardino County, Caltrans District 8.

**Length:** 46.91 km (29.16 mi).

**Target Species:** Desert tortoise (*Gopherus agassizii*), Mojave Ground Squirrel (*Xerospermophilus mohavensis*).

**Connectivity Concerns:** Potentially important area for Desert tortoise and Mojave Ground Squirrel.

**Remediation Goals:** Install exclusion/directional fencing. Expand/enhance existing infrastructure such as culverts.



**Figure:** Barrier W132 along US-395 in San Bernardino County.