



**Region 3 Barrier ID: W024 (Top Priority Barrier).**

**Barrier Name:** SR-129 Chittenden.

**Linear Infrastructure:** SR-129.

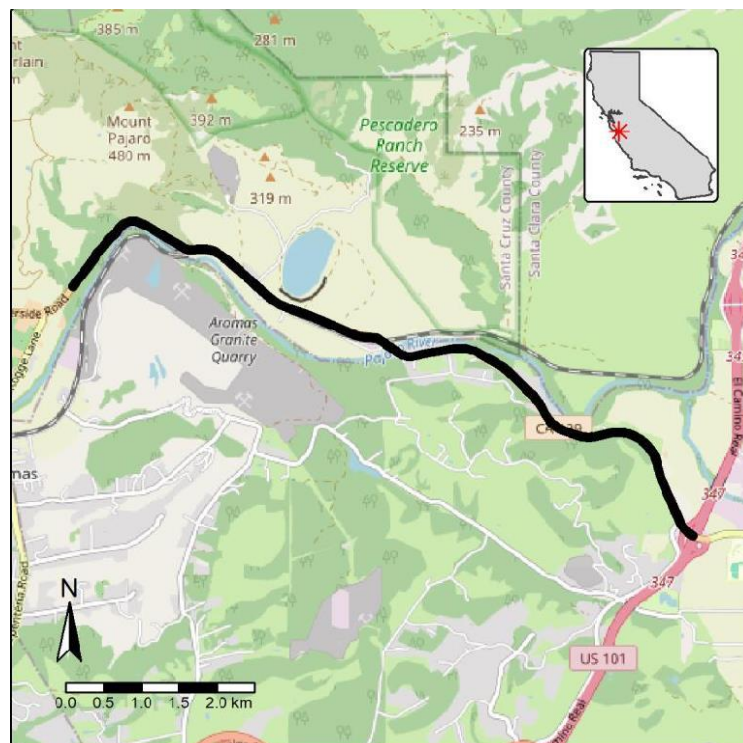
**Geographic Area:** Pajaro River between Pajaro Hills and Aromas Hills. Shared barrier with Region 4.

**Length:** 8.32 km (5.17 mi).

**Target Species:** American badger (*Taxidea taxus*), black bear (*Ursus americanus*), bobcat (*Lynx rufus*), California red-legged frog (*Rana draytonii*), California tiger salamander (*Ambystoma californiense*), mountain lion (*Puma concolor*), deer (*Odocoileus hemionus*), mesocarnivores.

**Connectivity Concerns:** This narrow linkage connects the southern Santa Cruz Mountains with the northern Gabilan Range. Studies have included existing infrastructure evaluation; and roadkill, radiotelemetry, and camera data which show high mortality rates as well as refusal of wildlife to cross this barrier.

**Remediation Goals:** Studies have identified where wildlife needs could be met through 1) maintaining existing structures, 2) constructing new structures, 3) land preservation, and 4) management such as adding fencing.



**Figure:** W024, SR-129 along Pajaro River between Pajaro Hills and Aromas Hills.