



Region 3 Barrier ID: W025 (Priority Barrier).

Barrier Name: Santa Rosa Plain - Todd Rd.

Linear Infrastructure: Todd Road.

Geographic Area: Santa Rosa Plain, near the city of Santa Rosa.

Length: 3.73 km (2.32 mi).

Target Species: California tiger salamander (CTS) (*Ambystoma californiense*).

Connectivity Concerns: This rural road bisects habitat, floods during heavy rains, and is heavily used during commute hours to avoid congestion elsewhere. In late fall, CTS movement often coincides with peak commutes, resulting in high road mortality. Poorly designed roadside ditches tend to overflow and wash CTS across roads as well.

Remediation Goals: A series of undercrossings may reduce mortality; however, more study is required to determine where these might be beneficial and what improvements in water management could be made. Goals are reduced mortality and flooding.

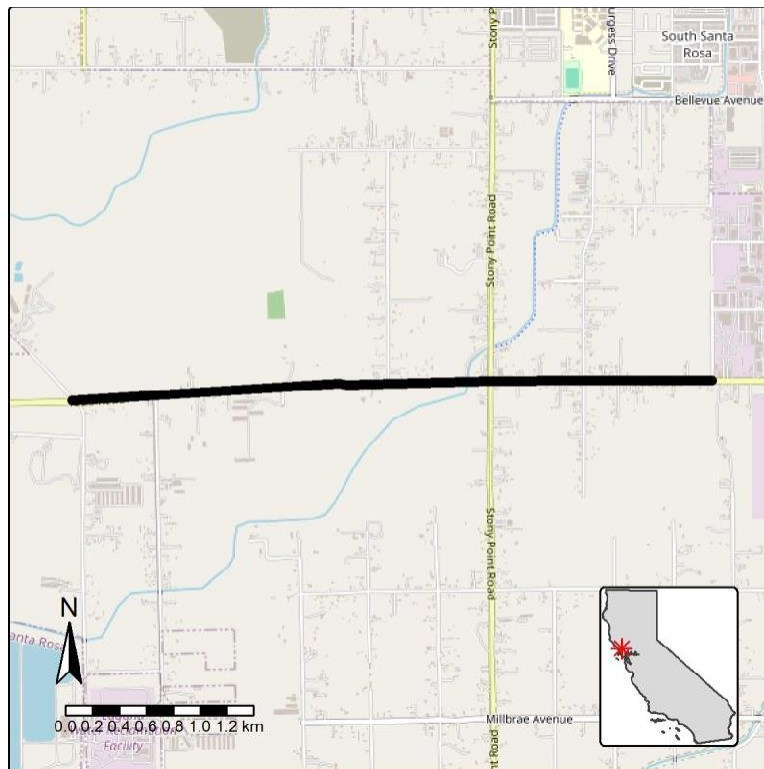


Figure: W025, on Todd Road in Santa Rosa Plain near Santa Rosa.