



Region 3 Barrier ID: W026 (Priority Barrier).

Barrier Name: SR-12 near Glen Ellen.

Linear Infrastructure: SR-12.

Geographic Area: Sonoma Highway (SR-12) from Los Alamos Road to Moon Mountain Road.

Length: 20.01 km (12.43 mi).

Target Species: Mountain lion (*Puma concolor*), deer (*Odocoileus hemionus*), mesocarnivores.

Connectivity Concerns: Camera, collar, and roadkill data show that this road is a significant barrier to a critical linkage between the Blue Ridge and Marin Coast. Wildlife must navigate between protected areas through rural properties, small towns, agriculture, and vineyards. SR-12 is another impediment.

Remediation Goals: Recently, two bridges were improved or replaced, with wildlife connectivity enhancements. Still, there are many more culverts and bridges, some over 100 years old, that need to be evaluated and potentially replaced. One culvert was identified by Caltrans to be replaced/improved, but not yet planned or funded. Multiple undercrossing, rather than overcrossing, construction or enhancement should improve connectivity on SR-12.

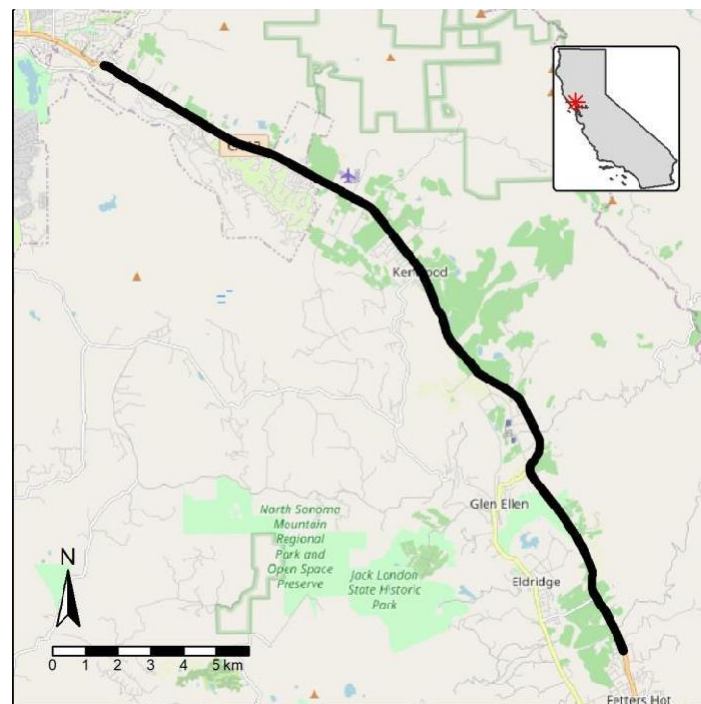


Figure: W026, SR-12 near Glen Ellen on Sonoma Highway from Los Alamos Road to Moon Mountain Road.