



Region 3 Barrier ID: W027 (Priority Barrier).

Barrier Name: I-580 Castro Valley to Dublin.

Linear Infrastructure: I-580.

Geographic Area: Dublin Hills.

Length: 5.75 km (3.58 mi).

Target Species: Alameda whipsnake (*Masticophis lateralis euryxanthus*), California red-legged frog (*Rana draytonii*), deer (*Odocoileus hemionus*), native fish and birds.

Connectivity Concerns: This highway bisects a critical linkage between the East Bay Hills and the Diablo Range. There are four known instream barriers, with others not assessed.

Remediation Goals: This is part of Restoring Connectivity for East Bay Ranges: Wildlife Overpass Planning Projects, which is assessing this barrier and other nearby highways for remediation. Suitable sites for crossings are being modeled. Culvert replacement or enhancement is also being assessed.

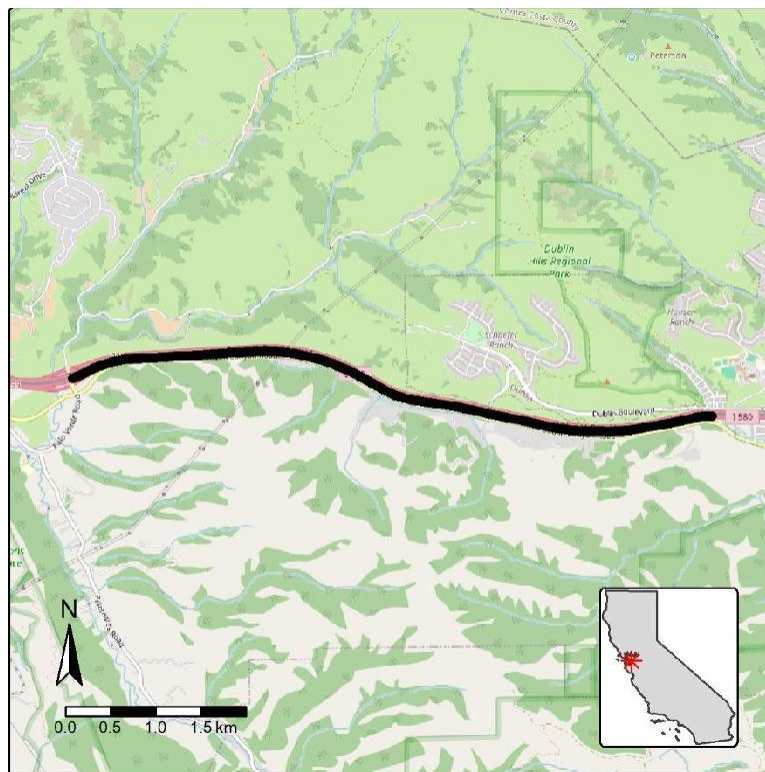


Figure: W027, I-580 in Castro Valley to Dublin in Dublin Hills.