



**Region 3 Barrier ID: W029 (Priority Barrier).**

**Barrier Name:** SR-84 and Calaveras Rd, Sunol Ridge to Niles Canyon.

**Linear Infrastructure:** SR-84 and Calaveras Road.

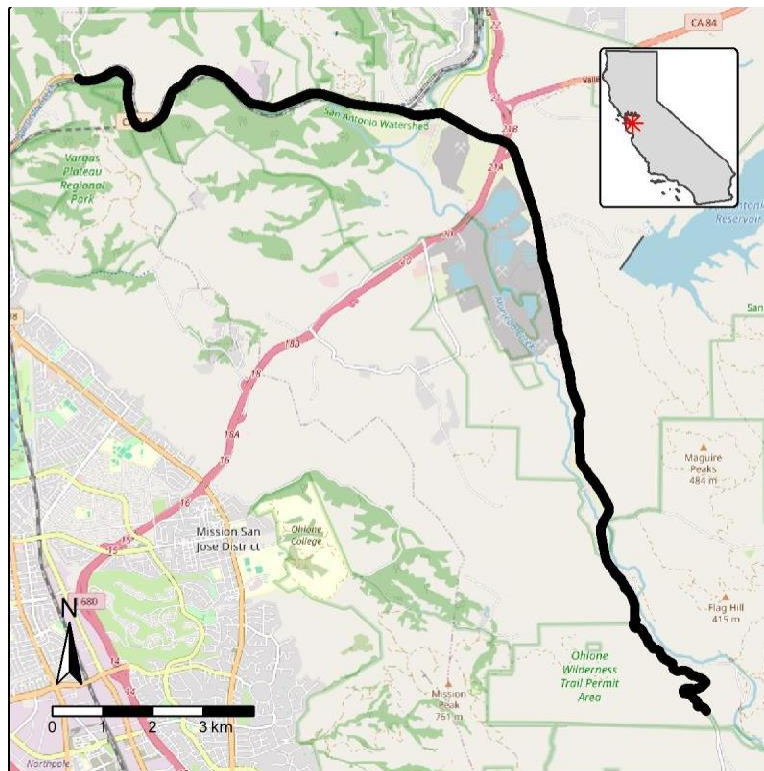
**Geographic Area:** East Bay Hills East of the town of Fremont.

**Length:** 18.86 km (11.72 mi).

**Target Species:** Alameda whipsnake (*Masticophis lateralis euryxanthus*), California red-legged frog (*Rana draytonii*), California tiger salamander (*Ambystoma californiense*), mountain lion (*Puma concolor*), tule elk (*Cervus canadensis nannodes*).

**Connectivity Concerns:** This highway bisects a critical linkage between the East Bay Hills and the Diablo Range and modeled core mountain lion habitat.

**Remediation Goals:** The SR-84 portion is part of Restoring Connectivity for East Bay Ranges: Wildlife Overpass Planning Projects, which is assessing this barrier and other nearby highways for remediation. Suitable sites for crossings are being modeled. The Calaveras Road segment needs further evaluation.



**Figure:** W029, SR-84 and Calaveras Road on Sunol Ridge to Niles Canyon in East Bay Hills East of Fremont.