



Region 4 Barrier ID: W034 (Priority Barrier).

Barrier Name: US-101 Cuesta Grade.

Linear Infrastructure: US-101.

Geographic Area: San Luis Obispo to Atascadero.

Length: 16.01 km (9.95 mi).

Target Species: Black bear (*Ursus americanus*), California red-legged frog (*Rana draytonii*), mountain lion (*Puma concolor*), deer (*Odocoileus hemionus*).

Connectivity Concerns: US-101 bisects large blocks of intact habitat for several species in the Santa Lucia Range, which connects to the Transverse Ranges to the south and the interior Coast Ranges (Gabilans, Diablos) and Santa Cruz Mountains to the north. Remote camera data and GPS collar data from black bears and mountain lions shows that wildlife will cross US-101 near Cuesta Grade using existing infrastructure.

Remediation Goals: Expand and enhance existing infrastructure such as culverts and creek bridges, add new under-crossings and extend wildlife exclusion fencing.

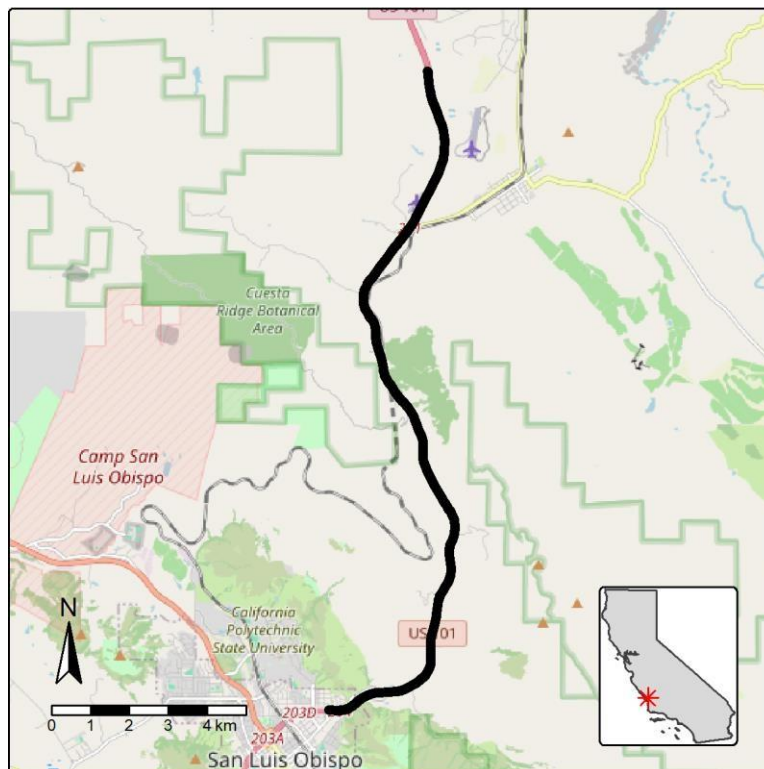


Figure: US-101 (Cuesta Grade) between San Luis Obispo and Atascadero is a Region 4 priority wildlife connectivity barrier.