



Region 4 Barrier ID: W035 (Barrier).

Barrier Name: High Speed Rail Alpaugh.

Linear Infrastructure: High Speed Rail.

Geographic Area: Alpaugh to Kernell.

Length: 14.34 km (8.91 mi).

Target Species: Blunt-nosed leopard lizard (*Gambelia sila*), Tipton kangaroo rat (*Dipodomys nitratooides nitratooides*), San Joaquin antelope squirrel (*Ammospermophilus nelsoni*), San Joaquin kit fox (*Vulpes macrotis mutica*).

Connectivity Concerns: High speed rail may impact connectivity in the Central Valley for small and medium sized mammals, amphibians, and reptiles.

Remediation Goals: Expand and enhance existing infrastructure such as culverts and creek bridges, add new under-crossings and wildlife exclusion fencing.

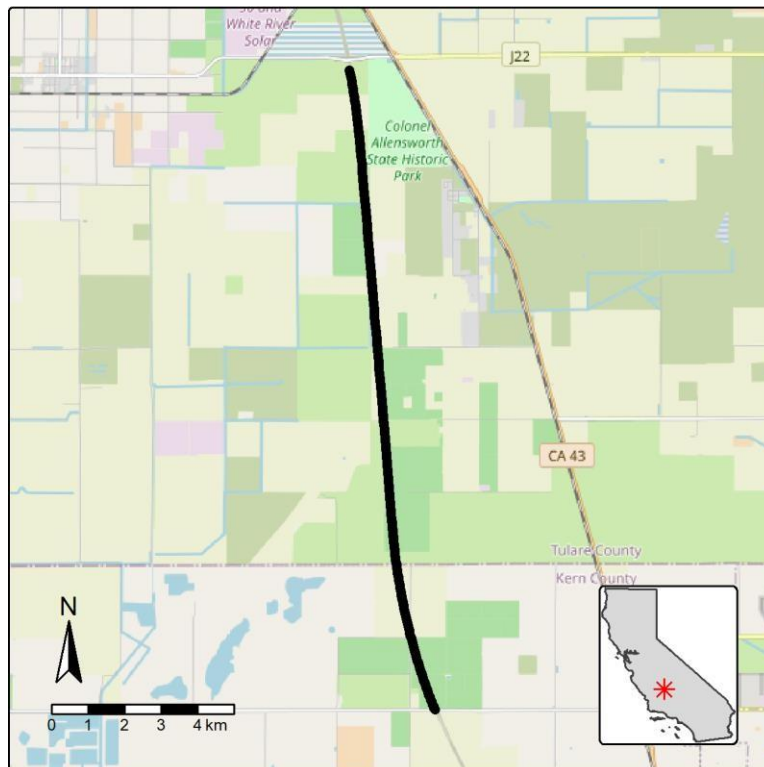


Figure: High speed railway (HSR) between Alpaugh and Kernell is a Region 4 wildlife connectivity barrier.