



Region 4 Barrier ID: W040 (Barrier).

Barrier Name: Concrete Canal - Los Banos.

Linear Infrastructure: Canal.

Geographic Area: San Luis National Wildlife Refuge to Los Banos.

Length: 20.16 km (12.53 mi)

Target Species: Badger (*Taxidea taxus*), giant garter snake (*Thamnophis gigas*), deer (*Odocoileus hemionus*), tule elk (*Cervus canadensis nannodes*), western spadefoot toad (*Spea hammondi*).

Connectivity Concerns: Canal bisects large blocks of intact riparian, wetland, and grassland habitat for several species in the San Joaquin Valley. Canal is a known source of mortality for deer that cannot escape the steep concrete walls.

Remediation Goals: Expand and enhance existing infrastructure such as culverts and creek bridges, add new under-crossings and wildlife exclusion fencing. Place escape routes or rubber matting so that deer can climb out of canal.

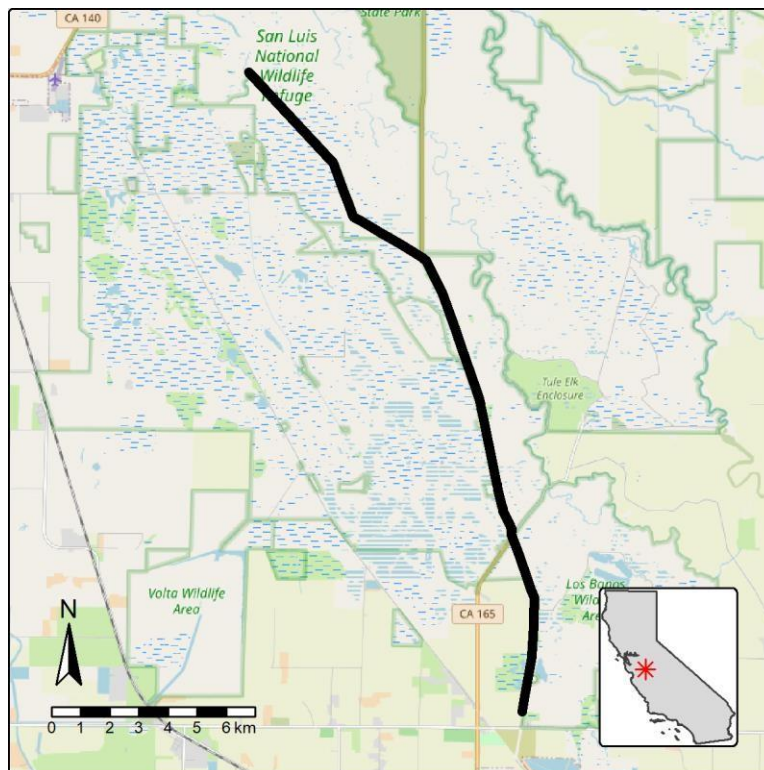


Figure: Canal (San Joaquin Valley North) between San Luis National Wildlife Refuge and Los Banos is a Region 4 wildlife connectivity barrier.