



Region 5 Barrier ID: W044 (Priority Barrier).

Barrier Name: SR-67 Maplevue St to Etcheverry St.

Linear Infrastructure: SR-67.

Geographic Area: San Diego County, just west of San Vicente Reservoir.

Length: 26.48 km (16.45 mi).

Target Species: Mountain lion (*Puma concolor*), deer (*Odocoileus hemionus*), bobcat (*Lynx rufus*), western toad (*Anaxyrus boreas*), American badger (*Taxidea taxus*).

Connectivity Concerns: Remote camera data and GPS collar data from mountain lions shows that wildlife will cross State Route 67 using existing infrastructure. Widening of SR-67 by Caltrans District 11 may not be initiated until 2040, but a comprehensive, data-driven assessment is necessary to facilitate conservation planning in the interim. This planning will ensure acquisitions, habitat restoration, and management actions to establish a functionally connected landscape that can progress towards a strategy that will support viable wildlife populations in perpetuity.

Remediation Goals: Expand and enhance existing infrastructure such as culverts and creek bridges, add new under-crossings install wildlife exclusion fencing and secure additional lands for connectivity.

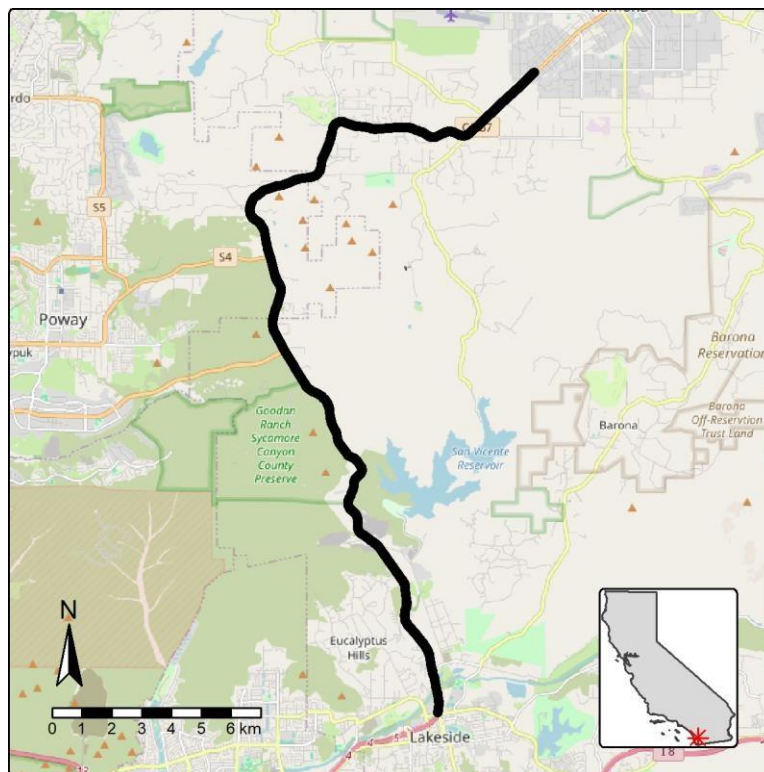


Figure: SR-67 Maplevue St to Etcheverry St is a Region 5 priority wildlife connectivity barrier.