



Region 5 Barrier ID: W046 (Top Priority Barrier).

Barrier Name: I-15 Temecula to E Mission Rd, mountain lion E-W movement barrier.

Linear Infrastructure: I-15.

Geographic Area: Santa Ana-Palomar Mountains Linkage Southern California, just south of Temecula at the San Diego, Riverside County line. Shared barrier with Region 6.

Length: 11.06 km (6.66 miles).

Target Species: Mountain lion (*Puma concolor*), deer (*Odocoileus hemionus*), bobcat (*Lynx rufus*), mesocarnivores, western pond turtle (*Actinemys marmorata*), arroyo chub (*Gila orcuttii*), arroyo toad (*Anaxyrus californicus*), Quino checkerspot (*Euphydryas editha quino*), California gnatcatcher (*Poliophtila californica*).

Connectivity Concerns: I-15 bisects the Santa Ana-Palomar Mountain linkage. Mountain lions and other wildlife have been documented on both sides of the highway, existing crossing structures appear to be inadequate to allow regular safe passage leading to decreased biodiversity and less genetic exchange. Wildlife mortalities caused by vehicle strikes also occur regularly along this stretch of I-15. This is a vital landscape linkage for California megafauna. GPS collar data from deer and mountain lions shows this stretch of highway is a significant barrier to wildlife movement.

Remediation Goals: In response to wildlife mortality from vehicle strikes, Caltrans (District 8) installed wildlife exclusion fencing along both sides of I-15 from the Temecula Creek Bridge southward to the San Diego County border as part of a highway pavement repair project in 2020. The installation of wildlife exclusion fencing has increased the urgency to plan, secure funding for, and implement needed wildlife crossing structures.

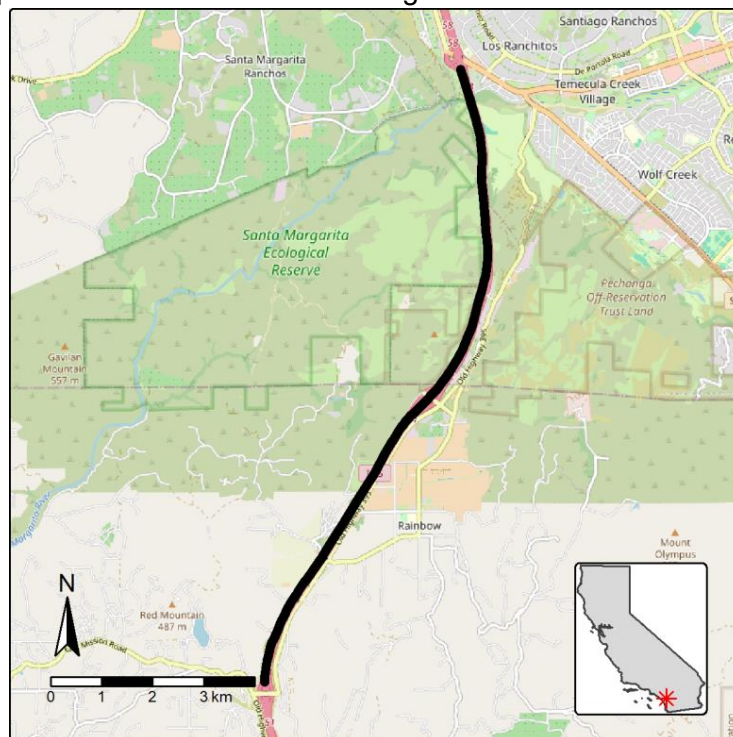


Figure: I-15 Temecula to E Mission Road is a Region 5 top priority wildlife connectivity barrier.