



**Region 5 Barrier ID: W047 (Priority Barrier).**

**Barrier Name:** I-5 North of Sylmar.

**Linear Infrastructure:** I-5.

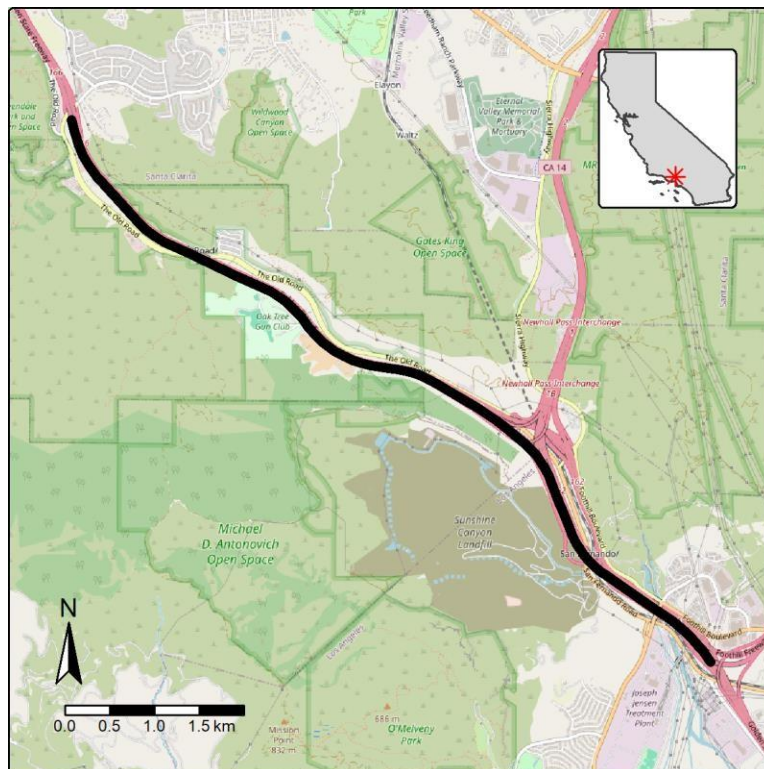
**Geographic Area:** Los Angeles County, north of the city of Sylmar within Newhall Pass.

**Length:** 8.04 km (4.99 mi).

**Target Species:** Mountain lion (*Puma concolor*), deer (*Odocoileus hemionus*).

**Connectivity Concerns:** The Newhall Pass is known to have frequent wildlife-vehicle collisions, many involving mountain lions. Increasing gene flow is essential for the recovery of local mountain lion populations, currently in danger of local extinction due to inbreeding depression. Mountain lions in Southern California face an increasing risk of local extinction due to small population size and lack of connectivity.

**Remediation Goals:** Construct high-quality wildlife crossings, either overpasses or underpasses and associated supporting connectivity enhancement measures, along the I-5 and SR-14 within the Pass. Recommend constructing a major wildlife crossing feature in the Newhall Pass area to improve connectivity and resilience of wildlife populations and ecosystems in the Southern California Coast Ecoregion, and particularly in the San Gabriel, Santa Susana, and Santa Monica mountains.



**Figure:** I-5, north of The City of Sylmar within Newhall Pass is a Region 5 priority wildlife connectivity barrier.