



Region 5 Barrier ID: W048 (Barrier).

Barrier Name: SR-1 Vandenberg to Burton Mesa.

Linear Infrastructure: SR-1.

Geographic Area: SR-1 Vandenberg to Burton Mesa through Vandenberg Village.

Length: 6.03 km (3.75 mi).

Target Species: Mountain lion (*Puma concolor*), deer (*Odocoileus hemionus*), bobcat (*Lynx rufus*), spotted skunk (*Spilogale gracilis*), striped skunk (*Mephitis mephitis*), Virginia opossum (*Didelphis virginiana*), Northern raccoon (*Procyon lotor*), gray fox (*Urocyon cinereoargenteus*).

Connectivity Concerns: Hwy-1 bisects important landscape linkage identified in a species movement study, regional connectivity study, or Conceptual Area Protection Plan, and it inhibits connectivity between or within important habitat blocks for mountain lion. This is a roadkill hotspot.

Remediation Goals: Find areas of highest usage/risk to wildlife. Find number of animals by species using roadway to pass between natural habitats. More information needed on specific wildlife movement. Expand and enhance existing infrastructure such as culverts and creek bridges, add new undercrossings and wildlife exclusion fencing.

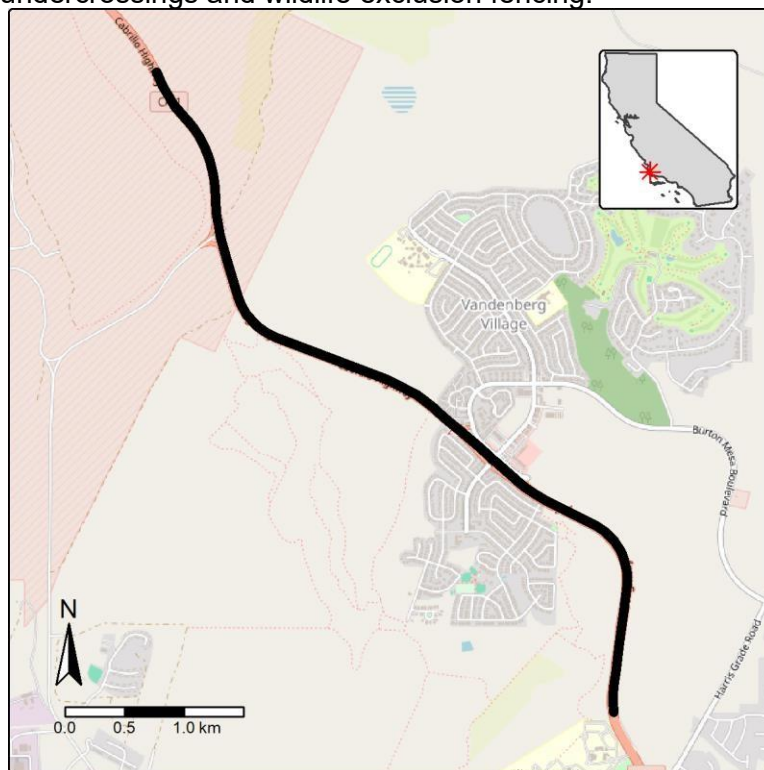


Figure: SR-1 Vandenberg to Burton Mesa is a Region 5 wildlife connectivity barrier.