



Region 6 Barrier ID: W052 (Priority Barrier).

Barrier Name: SR-91, N-S Mountain lion movement barrier ("B Canyon").

Linear Infrastructure: SR-91.

Geographic Area: East of Yorba Linda, West of Corona. Shared barrier with Region 5.

Length: 12.33 km (7.66 miles).

Target Species: Mountain lion (*Puma concolor*), deer (*Odocoileus hemionus*), bobcat (*Lynx rufus*), coyote (*Canis latrans*).

Connectivity Concerns: SR-91 bisects important Mountain Lion habitat between Chino Hills to the north and Santa Ana Mountains to the south. At the Riverside-Orange County border it is identified as a nearly impenetrable barrier to gene flow and movement for mountain lions and other wildlife into the Santa Anas from the Chino Hills. There are published papers, GPS collar data, camera monitoring data on the existing crossing, and published reports on wildlife movement at the culvert. Due to incremental widening of the highway, the culvert functionality as a wildlife corridor has been constrained due to a kink/bend in the culvert. Caltrans proposes to remove the kink in the existing B Canyon culvert under SR-91 by replacing the south end inlet with a new structure segment that will straighten the culvert. The project will regain the line of sight for wildlife usage, thus reconnecting a linkage north and south of SR-91.

Remediation Goals: Straightening of existing undercrossing - the culvert is kinked and does not have a clear line of site, Caltrans has a design ready for the fixed crossing, add fencing/sound/light-barrier walls approaching the crossing on both sides of SR-91. The RCA identified critical lands to purchase within the B Canyon corridor to ensure that development pressures in the City of Corona do not diminish the future viability of the corridor. Ensuring that conserved lands are found on both sides of the highway will thus ensure the viability of B Canyon as a wildlife crossing, similar to the efforts that conserved the existing Coal Canyon wildlife crossing one mile to the west of B Canyon.

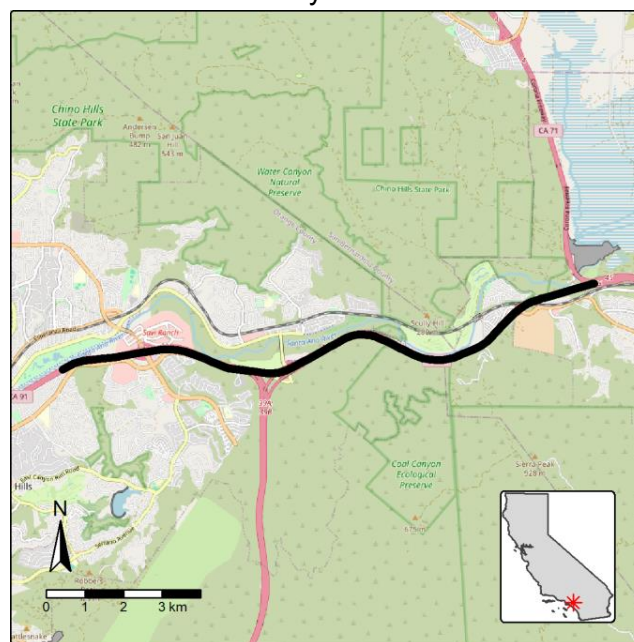


Figure: SR-91, east of Yorba Linda, west of Corona is a Region 5 and 6 wildlife connectivity barrier.