



Region 6 Barrier ID: W054 (Top Priority Barrier).

Barrier Name: US-395 & SR-203, Mono County (Mammoth airport).

Linear Infrastructure: US-395.

Geographic Area: US-395 corridor, Mono County, Caltrans District 9.

Length: 20.62 km (12.81 mi).

Target Species: Deer (*Odocoileus hemionus*), mountain lion (*Puma concolor*), black bear (*Ursus americanus*), sage grouse (*Centrocercus urophasianus*).

Connectivity Concerns: This site encompasses the intersection of US-395 with the seasonal migration routes of two deer herds. There is substantial mortality from vehicle collisions for both deer herds. Mountain lion, bear, bi-state sage-grouse and other spp also occasionally are struck and killed here.

Remediation Goals: Two overcrossings, one new undercrossing (replacement of existing box culvert with bridge), an improved undercrossing, several miles of exclusion fencing and a motorist alert system (the SR-203 segment) are all in the planning stages.

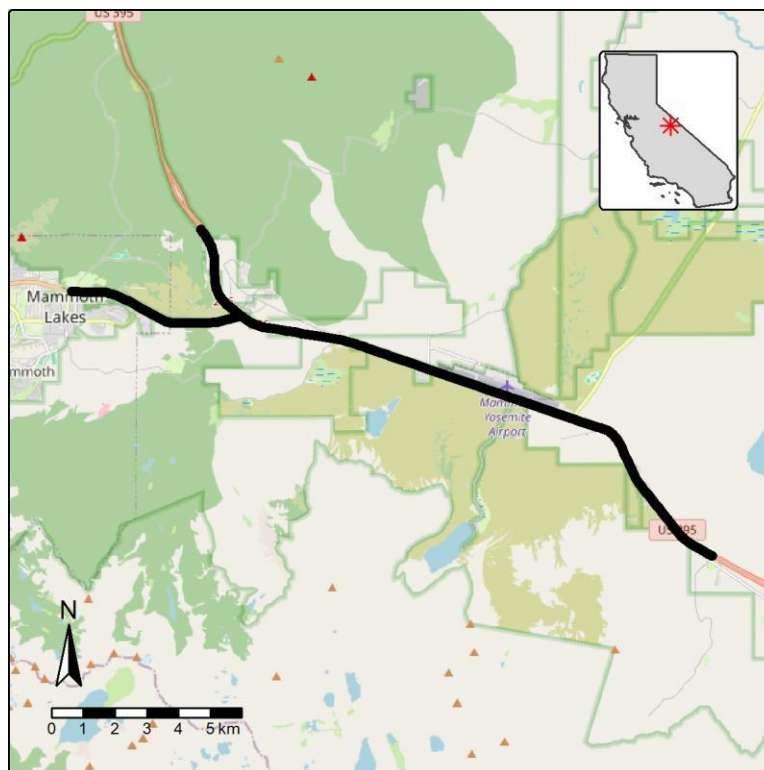


Figure: Barrier W054, along US-395 & SR-203 in Mono County.