



**Region 6 Barrier ID: W055 (Priority Barrier).**

**Barrier Name:** US-395 Mono County, Bridgeport to Sonora Junction.

**Linear Infrastructure:** US-395.

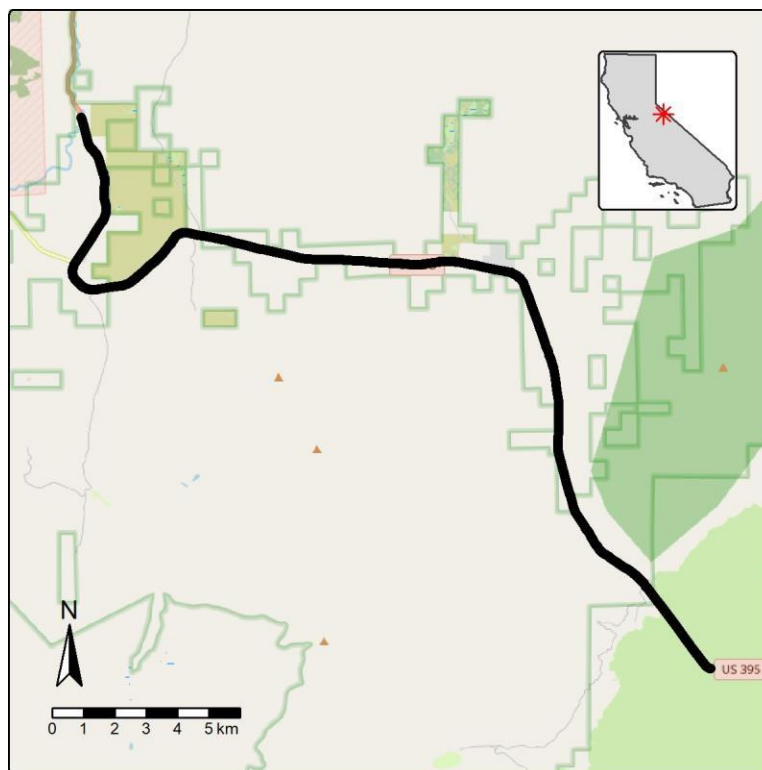
**Geographic Area:** US-395 corridor, Mono County, Caltrans District 9.

**Length:** 27.60 km (17.15 mi).

**Target Species:** Deer (*Odocoileus hemionus*), mountain lion (*Puma concolor*), black bear (*Ursus americanus*).

**Connectivity Concerns:** This includes two important migratory deer roadkill hotspots (Sonora Junction, and Buckeye Road, near Bridgeport) where seasonal deer migrations cross US 395. Mountain Lion and Bear, and other species also get struck along this segment. In addition, Bi-State Sage-Grouse has populations on both sides of the highway in this area.

**Remediation Goals:** In Summer 2024, culverts were installed at Sonora Junction, with exclusion fencing planned for summer 2025. No remediation is planned for Buckeye Road. Cameras were installed after fall migration in 2024. Deer collar deployment is planned for 2025.



**Figure:** Barrier W055 along US-395 corridor in Mono County.