



Region 6 Barrier ID: W058 (Priority Barrier).

Barrier Name: I-10 Banning Pass.

Linear Infrastructure: I-10.

Geographic Area: Transverse/Peninsular Ranges, Riverside County, Caltrans District 8.

Length: 24.32 km (15.11 mi).

Target Species: Deer (*Odocoileus hemionus*), mountain lion (*Puma concolor*), black bear (*Ursus americanus*), bighorn sheep (*Ovis canadensis*).

Connectivity Concerns: This barrier separates the San Gabriel Mountains from the San Jacinto Mountains. I-10, along with mixed suburban and commercial development provide a near complete barrier to all species.

Remediation Goals: There are ongoing talks involving CDFW Region 6 Habcon, The Nature Conservancy, South Coast Wildlands, Coachella Valley Multiple Species Habitat Conservation Plan, and others as to how to improve permeability through land acquisition and preventing further development. A key parallel concern here is the ability of alluvium to move downstream into the Coachella Valley to support species there that require sand deposits.

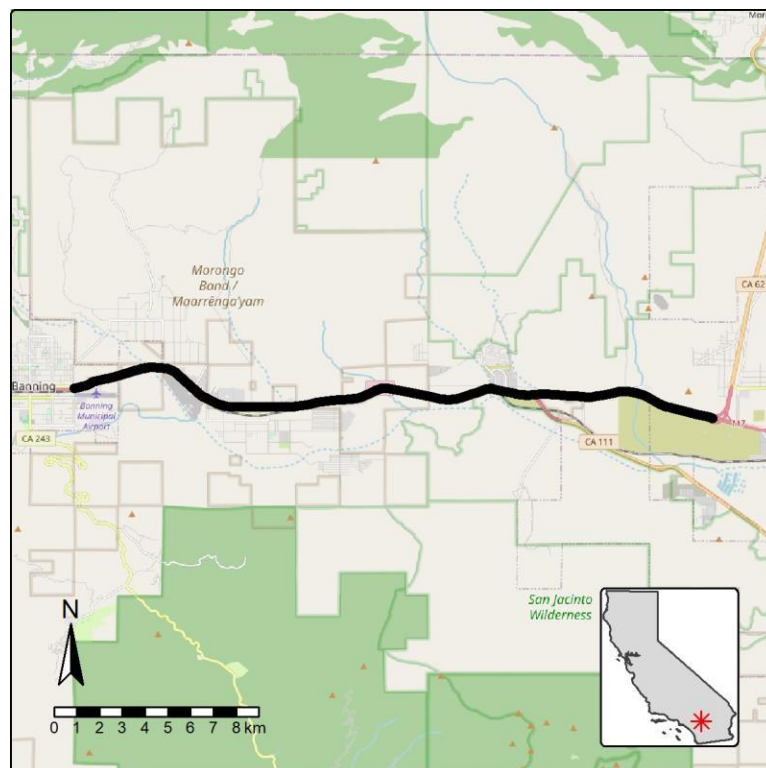


Figure: Barrier W058 along I-10 in Riverside County.