



Region 6 Barrier ID: W059 (Priority Barrier).

Barrier Name: SR-74/Palms to Pines Scenic Byway - through the Santa Rosa Mountains.

Linear Infrastructure: SR-74.

Geographic Area: Pinyon Pines, south of Palm Desert. Shared barrier with Region 5.

Length: 13.32 km (8.28 miles).

Target Species: Peninsular Bighorn sheep (*Ovis canadensis nelsoni*), Mountain lion (*Puma concolor*), deer (*Odocoileus hemionus*), black bear (*Ursus americanus*).

Connectivity Concerns: SR-74 bisects important Peninsular Bighorn sheep habitat within the Santa Rosa, San Jacinto Mountains National Monument. GPS collar data indicates a pattern of approach and refuse at this barrier location. This segment is a roadkill hotspot for the Bighorn Sheep. There is high quality natural habitat on both sides of the barrier. Barrier removal or retrofitting would create a broad, intact linkage, patch, or core area on conserved lands. Committed partners or landowners guarantee a contiguous linkage feasible in perpetuity.

Remediation Goals: Need fencing and location(s) for crossing. Some concern that improving movement along this stretch may lead to higher disease transmission rate among sheep.

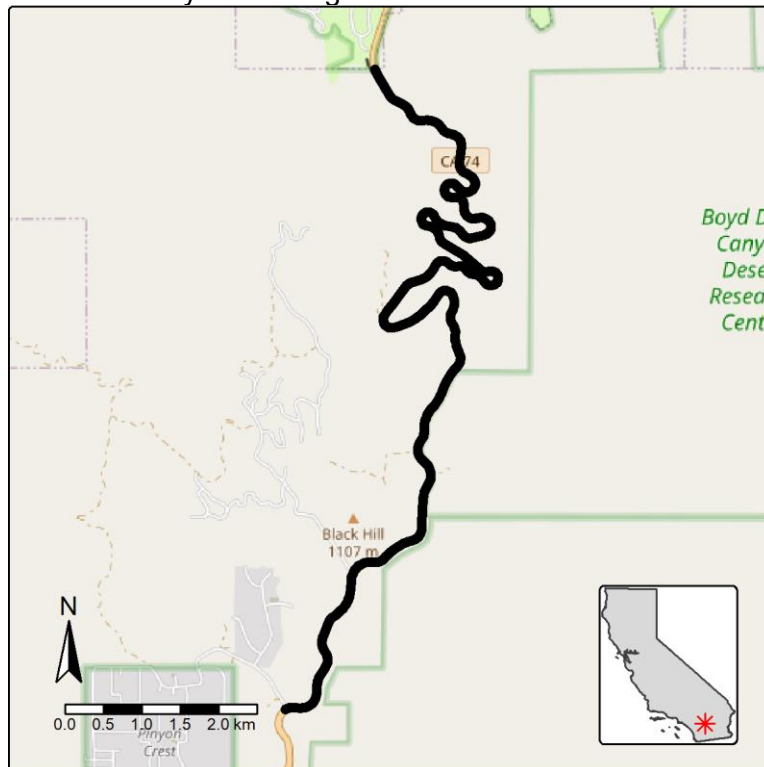


Figure: SR-74 Pinyon Pines, south of Palm Desert is a Region 5 and 6 wildlife connectivity barrier.