



Region 6 Barrier ID: W060 (Priority Barrier).

Barrier Name: Cajon Pass, I-15 and I-215.

Linear Infrastructure: I-15 and I-215.

Geographic Area: Transverse/Peninsular Ranges San Bernadino County, Caltrans District 8.

Length: 32.59 km (20.25 mi).

Target Species: Deer (*Odocoileus hemionus*), mountain lion (*Puma concolor*), black bear (*Ursus americanus*), bighorn sheep (*Ovis canadensis*), badger (*Taxidea taxus*), kangaroo rats (*Dipodomys spp.*).

Connectivity Concerns: Separates the San Gabriels from the San Bernardinos, including montane species (lions, bear, deer, etc.) but also lowland species (badger, Kangaroo rats). Brightline Train will be constructed within the median of I-15 through Cajon Pass prior to 2028, with no plans for improving wildlife connectivity.

Remediation Goals: Existing bridges and other infrastructure is discussed by Penrod et al. (2005). The impacts of the Brightline construction on connectivity are unknown.

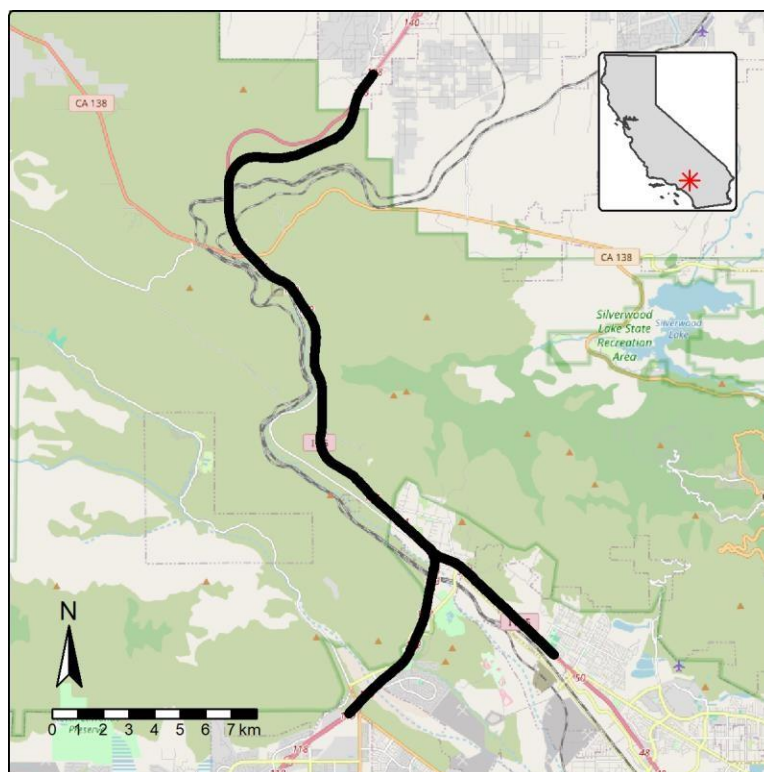


Figure: Barrier W060 along I-15 and I-215 in San Bernardino County.