



Region 1 Barrier ID: W062 (Barrier).

Barrier Name: SR-299 towards Cedar Pass.

Linear Infrastructure: SR-299.

Geographic Area: Modoc County, between Surprise Station and Cedar Pass.

Length: 9.46 km (5.88 mi).

Target Species: Pronghorn (*Antilocapra americana*), mesocarnivores.

Connectivity Concerns: The barrier completely disrupts a linkage identified in a species movement study, regional connectivity study, or Conceptual Area Protection Plan, or prevents movement between or within important habitat blocks. It bisects an ungulate migration corridor that has been mapped based on GPS collar data or expert knowledge. Some evidence indicates sensitive or high priority species present that may be impacted by the barrier. Expert knowledge or data indicates wildlife mortality of two or more species, but population-level impacts not expected.

Remediation Goals: Create wildlife crossing structure and modify fences.

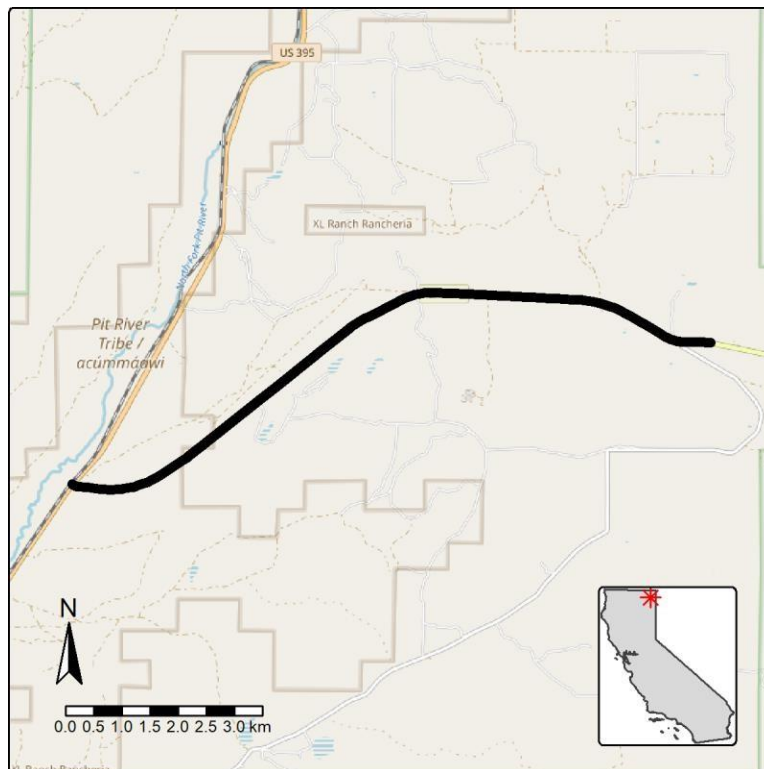


Figure: Barrier W062, on SR-299 towards Cedar Pass in Modoc County.