



Region 1 Barrier ID: W064 (Barrier).

Barrier Name: US-395 South of Likely to Tule Mountain/Sage.

Linear Infrastructure: US-395.

Geographic Area: Modoc County.

Length: 13.80 km (8.58 mi).

Target Species: Deer (*Odocoileus hemionus*), pronghorn (*Antilocapra americana*), mesocarnivores.

Connectivity Concerns: The barrier partially intersects (<50%) a linkage identified in a species movement study, regional connectivity study, or Conceptual Area Protection Plan, or inhibits connectivity between or within important habitat blocks. It bisects an ungulate migration corridor that has been mapped based on GPS collar data or expert knowledge. Some evidence indicates sensitive or high priority species present that may be impacted by the barrier. Expert knowledge or data indicates wildlife mortality of two or more species, but population-level impacts not expected.

Remediation Goals: Create crossing structure(s) and modify fences.

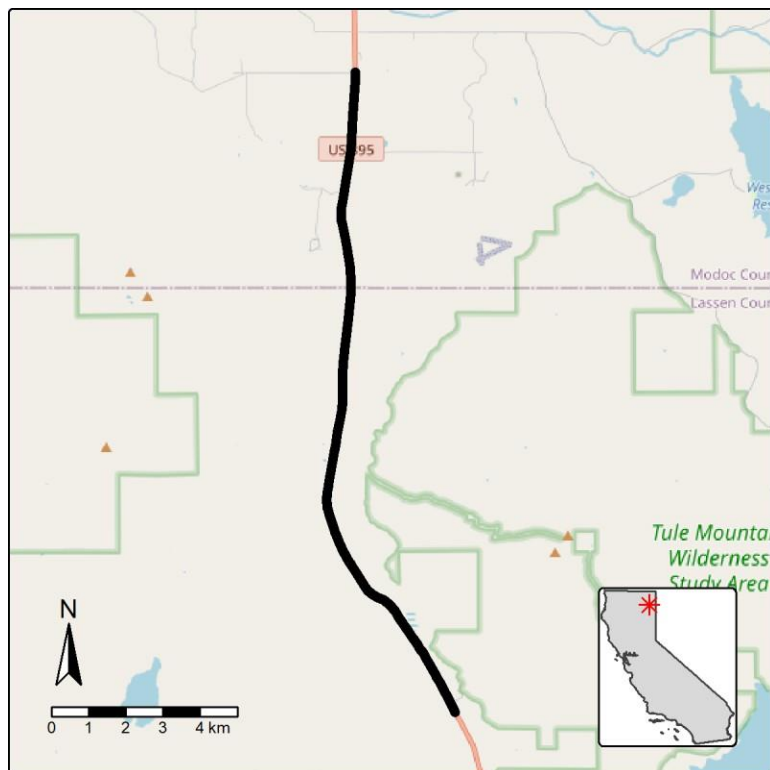


Figure: Barrier W064, on US-395 south of Likely to Tule Mountain in Modoc County.