



**Region 1 Barrier ID: W070 (Barrier).**

**Barrier Name:** I-5 Yreka townsite South.

**Linear Infrastructure:** I-5.

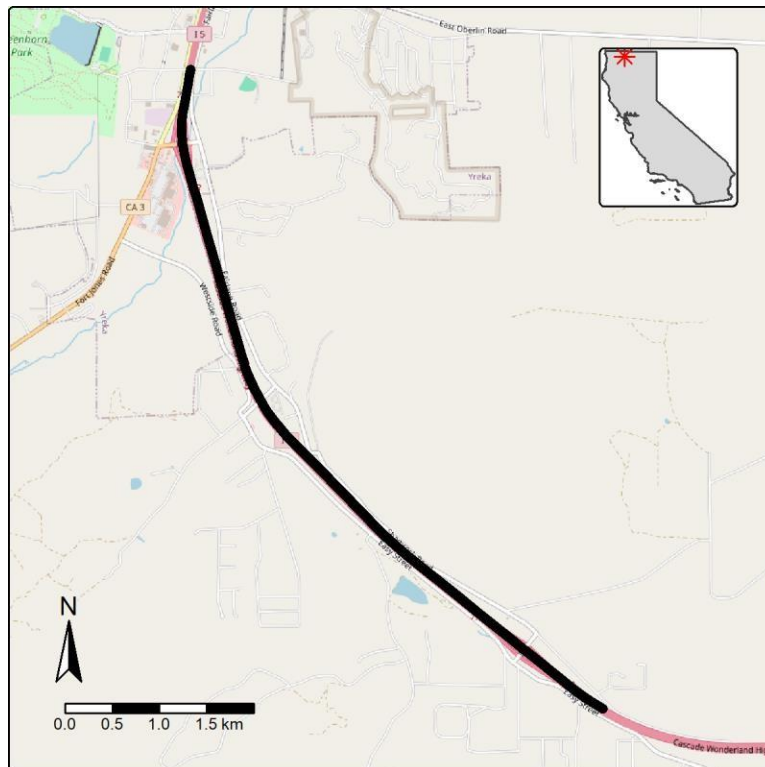
**Geographic Area:** Siskiyou County.

**Length:** 6.37 km (3.96 mi).

**Target Species:** Deer (*Odocoileus hemionus*), mountain lion (*Puma concolor*), mesocarnivores.

**Connectivity Concerns:** The barrier affects important movement corridors for sensitive or high-priority species, as identified in species movement studies, population viability analyses, or genetic studies. Data shows roadkill hotspots, significant or consistent wildlife mortality events, or mortality that could lead to population-level impacts for one or more species.

**Remediation Goals:** Modify existing underpasses, include fencing and jump-outs with connectivity components.



**Figure:** Barrier W070, on I-5 Yreka townsite South in Siskiyou County.