



**Region 1 Barrier ID: W071 (Barrier).**

**Barrier Name:** SR-3 Etna to Yreka.

**Linear Infrastructure:** SR-3.

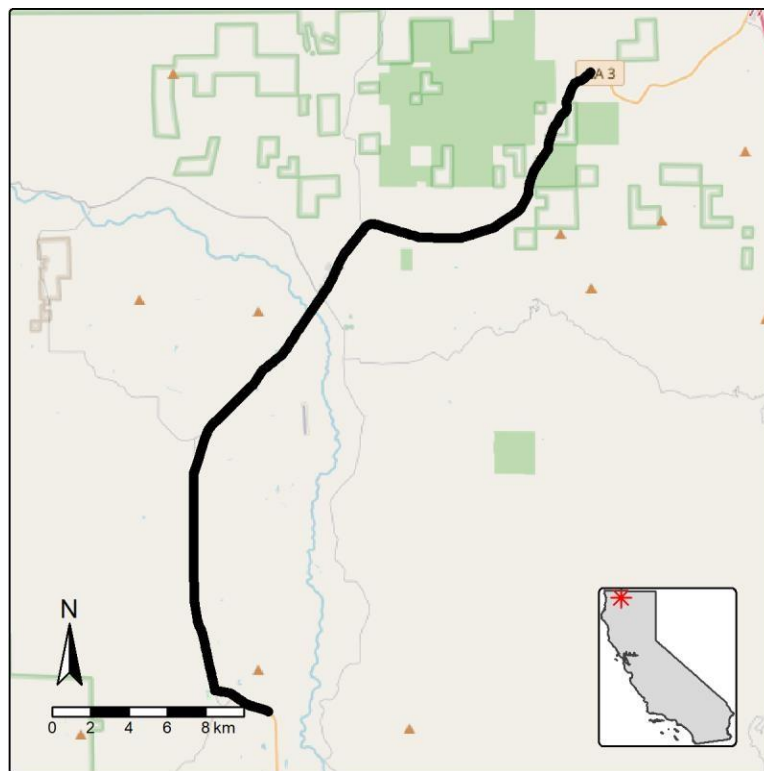
**Geographic Area:** Siskiyou County.

**Length:** 35.28 km (21.93 mi).

**Target Species:** Elk (*Cervus canadensis*), deer (*Odocoileus hemionus*), mountain lion (*Puma concolor*), mesocarnivores.

**Connectivity Concerns:** The barrier significantly disrupts (>50%) a linkage identified in a species movement study, regional connectivity study, or Conceptual Area Protection Plan, or significantly disrupts connectivity between or within important habitat blocks. It bisects an ungulate migration corridor that has been mapped based on GPS collar data or expert knowledge. The barrier also affects important movement corridors for sensitive or high-priority species, as identified in species movement studies, population viability analyses, or genetic studies. Data shows roadkill hotspots, significant or consistent wildlife mortality events, or mortality that could lead to population-level impacts for one or more species.

**Remediation Goals:** Modify existing culverts, add crossing structure, add fence and jump-outs with connectivity components.



**Figure:** Barrier W071, on SR-3 Etna to Yreka in Siskiyou County.