



Region 1 Barrier ID: W073 (Barrier).

Barrier Name: SR-36E Mineral to Paynes Creek.

Linear Infrastructure: SR-36.

Geographic Area: Tehama County.

Length: 27.58 km (17.14 mi).

Target Species: Deer (*Odocoileus hemionus*), black bear (*Ursus americanus*), mountain lion (*Puma concolor*), mesocarnivores.

Connectivity Concerns: The barrier partially intersects (<50%) a linkage identified in a species movement study, regional connectivity study, or Conceptual Area Protection Plan, or inhibits connectivity between or within important habitat blocks. It impacts an ungulate migration corridor. Expert knowledge or data indicates wildlife mortality of two or more species, but population-level impacts not expected.

Remediation Goals: Additional data collection and analysis is required. Possible remediation goals include expanding and enhancing existing infrastructure such as culverts and creek bridges, create new overpass and wildlife exclusion fencing.

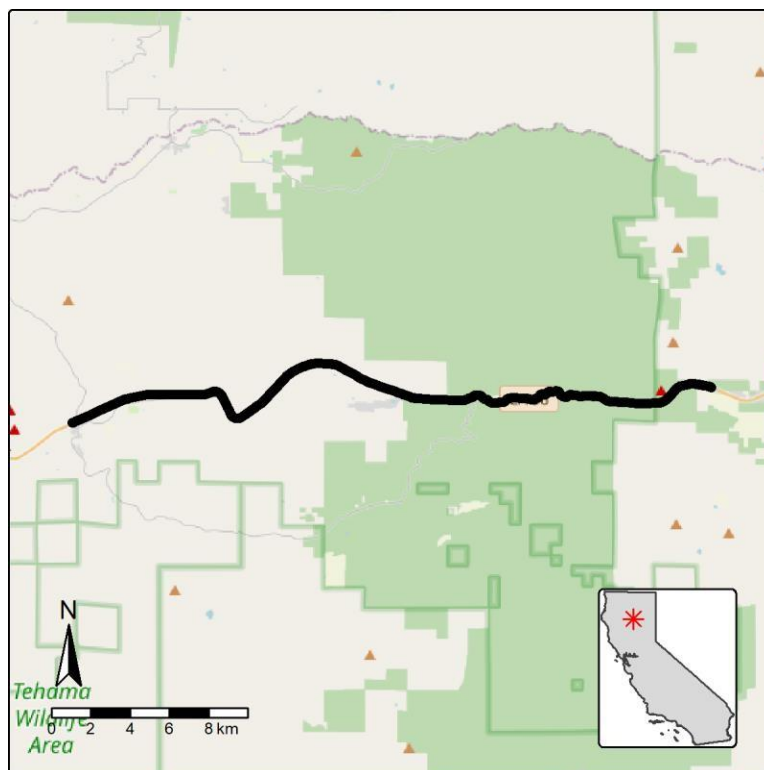


Figure: Barrier W073, on SR-36E Mineral to Paynes Creek in Tehama County.