



Region 1 Barrier ID: W074 (Barrier).

Barrier Name: SR-36E Paynes Creek to Red Bluff.

Linear Infrastructure: SR-36E.

Geographic Area: Tehama County.

Length: 27.46 km (17.07 mi).

Target Species: Deer (*Odocoileus hemionus*), black bear (*Ursus americanus*), foothill yellow-legged frog (*Rana boylei*), mesocarnivores.

Connectivity Concerns: The barrier partially intersects (<50%) a linkage identified in a species movement study, regional connectivity study, or Conceptual Area Protection Plan, or inhibits connectivity between or within important habitat blocks. Expert knowledge or data indicates wildlife mortality of two or more species, but population-level impacts not expected.

Remediation Goals: Additional data collection and analysis is required. Possible remediation goals include expanding and enhancing existing infrastructure such as culverts and creek bridges, create new overpass and wildlife exclusion fencing.

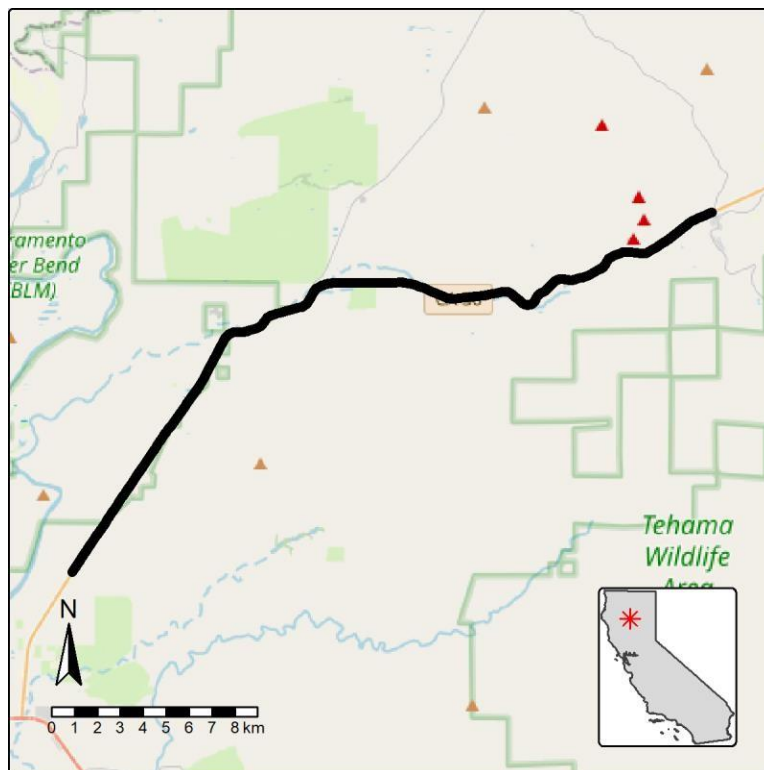


Figure: Barrier W074, on SR-36E Paynes Creek to Red Bluff in Tehama County.