



Region 1 Barrier ID: W075 (Barrier).

Barrier Name: I-5 Red Bluff.

Linear Infrastructure: I-5.

Geographic Area: Tehama County, I- 5.

Length: 11.49 km (7.14 mi).

Target Species: Deer (*Odocoileus hemionus*), gray fox (*Urocyon cinereoargenteus*), mesocarnivores.

Connectivity Concerns: The barrier significantly disrupts (>50%) a linkage identified in a species movement study, regional connectivity study, or Conceptual Area Protection Plan, or significantly disrupts connectivity between or within important habitat blocks. Data shows roadkill hotspots, significant or consistent wildlife mortality events, or mortality that could lead to population-level impacts for one or more species.

Remediation Goals: Additional data collection and analysis is required. Possible remediation goals include expanding and enhancing existing infrastructure such as culverts and creek bridges, create new overpass and wildlife exclusion fencing.

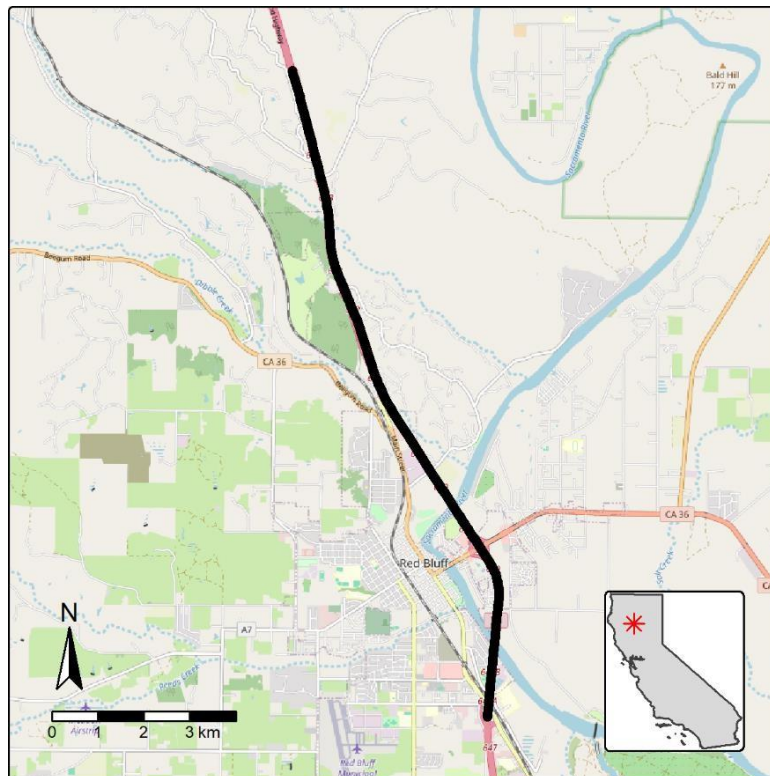


Figure: Barrier W075, I-5 through Red Bluff.