



**Region 1 Barrier ID: W076 (Barrier).**

**Barrier Name:** SR-36W Dibble Creek Area.

**Linear Infrastructure:** SR-36W.

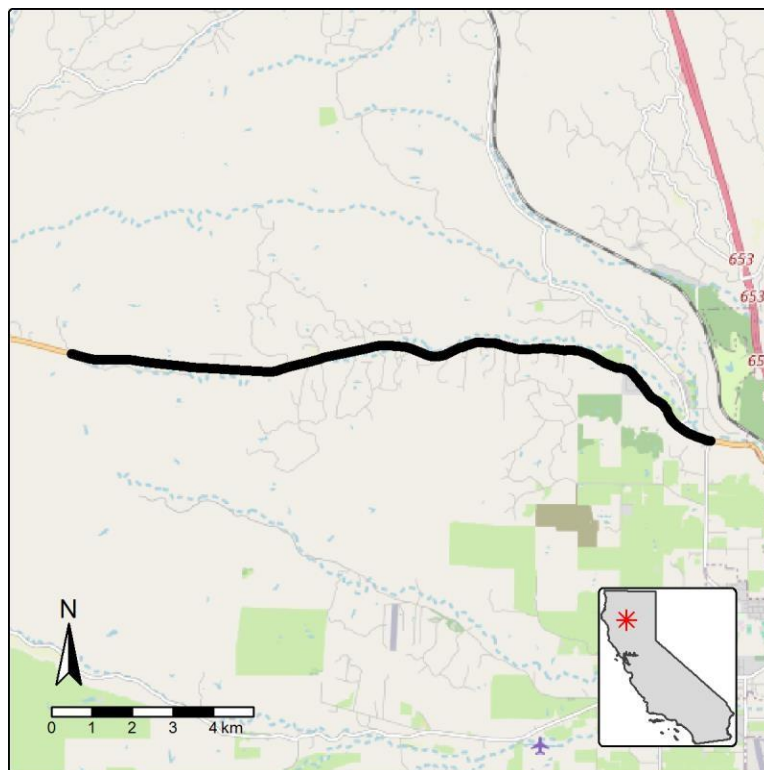
**Geographic Area:** Tehama County, SR-36W.

**Length:** 12.89 km (8.01 mi).

**Target Species:** Deer (*Odocoileus hemionus*), mesocarnivores.

**Connectivity Concerns:** Expert knowledge or data indicates wildlife mortality of at least one species, but population-level impacts not expected.

**Remediation Goals:** Additional data collection and analysis is required. Possible remediation goals include expanding and enhancing existing infrastructure such as culverts and creek bridges, create new overpass and wildlife exclusion fencing.



**Figure:** Barrier W076, SR-36W near Dibble Creek Area.