



**Region 1 Barrier ID: W077 (Barrier).**

**Barrier Name:** South Fork Eel River by Benbow.

**Linear Infrastructure:** US-101.

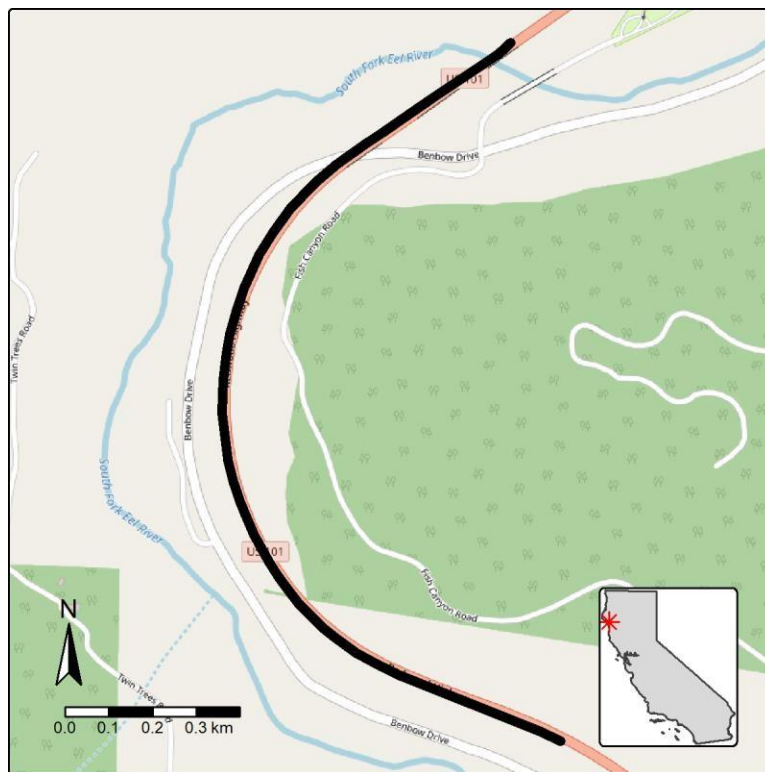
**Geographic Area:** Humboldt County, US-101.

**Length:** 1.75 km (1.09 mi).

**Target Species:** Deer (*Odocoileus hemionus*), foothill yellow-legged frog (*Rana boylei*), mesocarnivores.

**Connectivity Concerns:** Expert knowledge or data indicates wildlife mortality of two or more species, but population-level impacts not expected.

**Remediation Goals:** Modify existing culverts, add crossing structure, add fence and jump outs with connectivity component.



**Figure:** Barrier W077, South Fork Eel River by Benbow on US-101.