



Region 1 Barrier ID: W078 (Barrier).

Barrier Name: South of Willits Bypass.

Linear Infrastructure: US-101.

Geographic Area: Mendocino County, US-101.

Length: 6.19 km (3.85 mi).

Target Species: Deer (*Odocoileus hemionus*), mesocarnivores.

Connectivity Concerns: The barrier significantly disrupts (>50%) a linkage identified in a species movement study, regional connectivity study, or Conceptual Area Protection Plan, or significantly disrupts connectivity between or within important habitat blocks. Data shows roadkill hotspots, significant or consistent wildlife mortality events, or mortality that could lead to population-level impacts for one or more species.

Remediation Goals: Crossing structure, fencing.

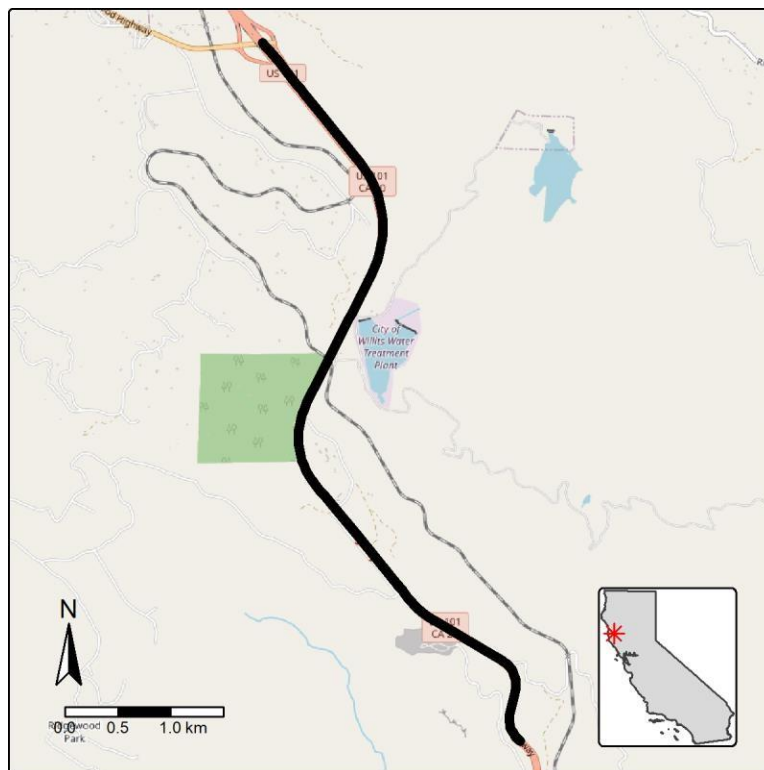


Figure: Barrier W078, South of Willits Bypass on US-101.