



Region 1 Barrier ID: W081 (Barrier).

Barrier Name: Garberville to Redway.

Linear Infrastructure: US-101.

Geographic Area: Humboldt County, US-101.

Length: 8.89 km (5.53 mi).

Target Species: Deer (*Odocoileus hemionus*), foothill yellow-legged frog (*Rana boylii*), mesocarnivores.

Connectivity Concerns: Expert knowledge or data indicates wildlife mortality of two or more species, but population-level impacts not expected.

Remediation Goals: Modify existing culverts, add crossing structure, add fence and jump outs with connectivity component.

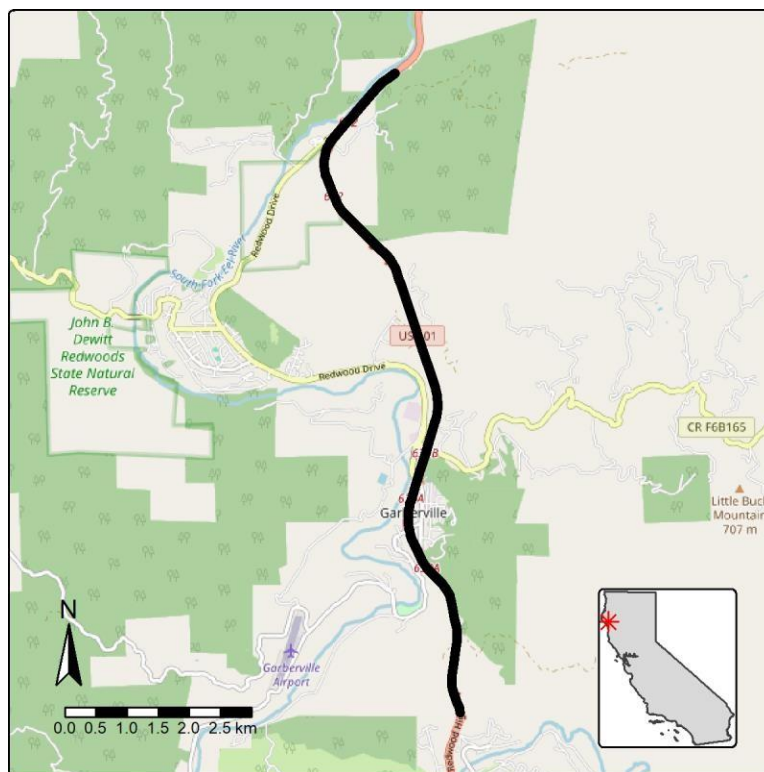


Figure: Barrier W081, Garberville to Redway on US-101.