



Region 1 Barrier ID: W085 (Barrier).

Barrier Name: East of US-101 Intersection.

Linear Infrastructure: US-101 and SR-299.

Geographic Area: Humboldt County, SR-299.

Length: 3.54 km (2.20 mi).

Target Species: Deer (*Odocoileus hemionus*), elk (*Cervus canadensis*), foothill yellow-legged frog (*Rana boylei*), mesocarnivores.

Connectivity Concerns: The barrier significantly disrupts (>50%) a linkage identified in a species movement study, regional connectivity study, or Conceptual Area Protection Plan, or significantly disrupts connectivity between or within important habitat blocks. The barrier also affects important movement corridors for sensitive or high-priority species, as identified in species movement studies, population viability analyses, or genetic studies. Expert knowledge or data indicates wildlife mortality of two or more species.

Remediation Goals: Crossing structure.

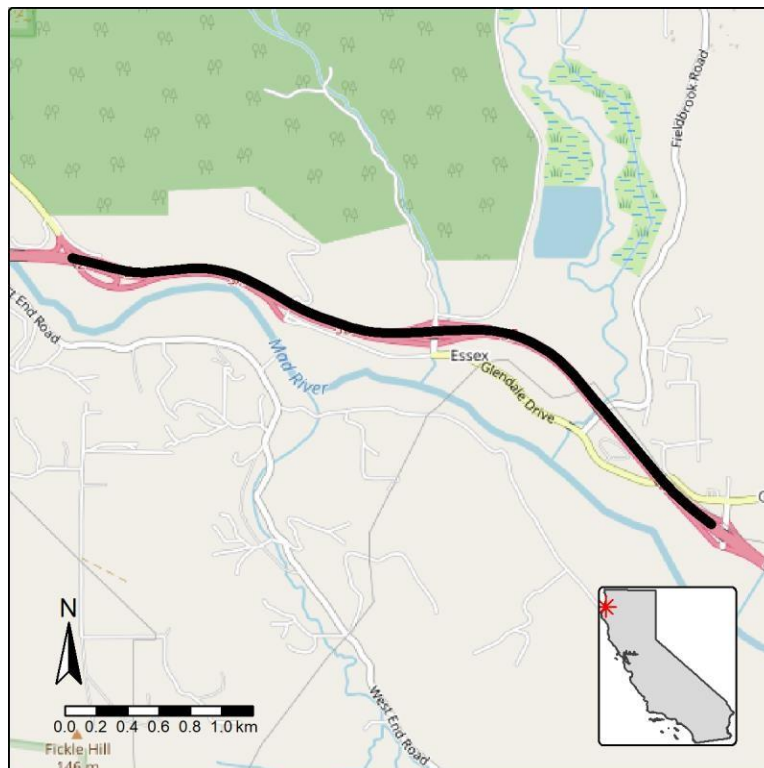


Figure: Barrier W085, just east of US-101 Intersection on SR-299.