



Region 2 Barrier ID: W087 (Priority Barrier).

Barrier Name: SR-70 at Blairsden west and east along the middle fork of the Feather River.

Linear Infrastructure: SR-70.

Geographic Area: Plumas County, at Blairsden west and east along the middle fork of the Feather River.

Length: 4.71 km (2.93 mi).

Target Species: Deer (*Odocoileus hemionus*), mountain lion (*Puma concolor*), gray wolf (*Canis lupus*), Rocky Mountain elk (*Cervus canadensis nelsoni*).

Connectivity Concerns: This stretch of SR-70 includes a mix of resident and migratory deer in the Sloat, Loyalton-Truckee, and Doyle deer herds. Wildlife crosses the highway for daily and seasonal movements, which causes animal vehicle collision as there are few places for them to safely cross under the highway.

Remediation Goals: Expand and enhance existing infrastructure such as culverts and creek bridges, add new wildlife crossing structures and wildlife exclusion fencing.

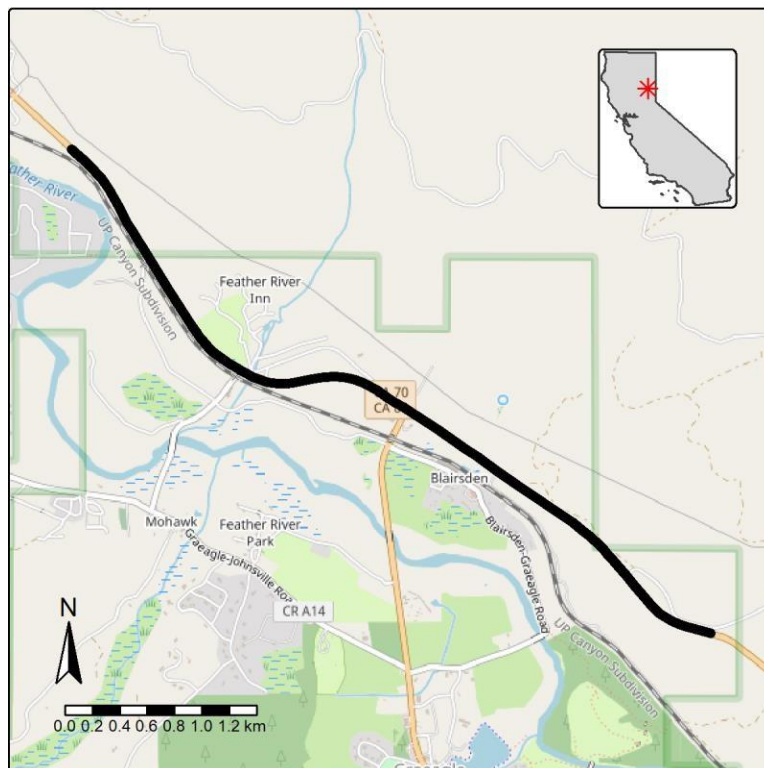


Figure: SR-70 at Blairsden west and east along the middle fork of the Feather River is a Region 2 priority wildlife connectivity barrier.